


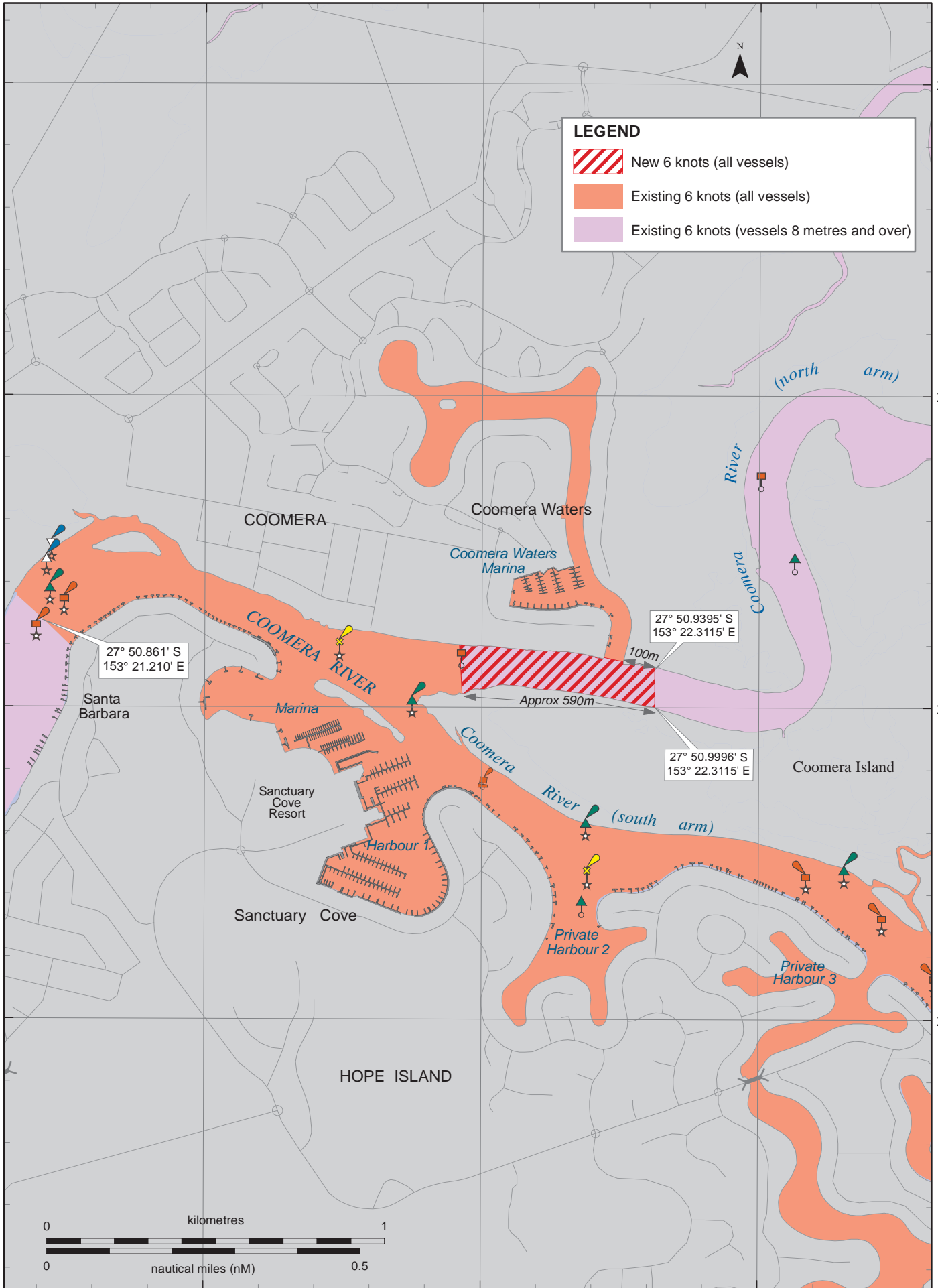


**LEGEND**

-  New 6 knots (all vessels)
-  Existing 6 knots (all vessels)
-  Existing 6 knots (vessels 8 metres and over)



Not for Navigation

Horizontal datum: GDA94 (WGS84 compatible)  
Projection: Transverse Mercator MGA Zone 56

**Map S8sp-12**

Prepared 9 December 2010  
Maritime Safety Queensland - Spatial Services

Speed restriction for all vessels under the  
*Transport Operations (Marine Safety) Regulation 2004*

**COOMERA RIVER - NORTH ARM  
6 knot speed restriction (all vessels)**

© The State of Queensland  
(Dept of Transport and Main Roads) 2010  
To view a copy of the licence, visit  
<http://creativecommons.org/licenses/by-nc-nd/3.0/au>

