

1.1.1 Small Craft Anchorage Area

A small craft anchorage area including buoy moorings has been established between Laird Point and South Passage Island as indicated on map C2-157.

Gladstone Ports Corporation (GPC) is responsible for the management of this small craft anchorage. Permission must be sought from the GPC prior to any anchoring or mooring of vessels within the construction zone. The GPC will determine and allocate a suitable area for all vessels that wish to anchor or moor within the construction zone.

Further small craft anchorage areas have been established as indicated on map S80-21. These lie in the Quoin Channel and Facing Channel, within the following coordinates:

Quoin Channel

Latitude longitude

23° 48.75' S 151° 16.51' E
23° 48.87' S 151° 16.39' E
23° 49.13' S 151° 16.26' E
23° 49.30' S 151° 16.44' E
23° 50.00' S 151° 17.79' E
23° 49.84' S 151° 17.87' E
23° 49.55' S 151° 17.65' E
23° 49.26' S 151° 17.05' E
23° 49.09' S 151° 17.05' E
23° 48.93' S 151° 16.72' E

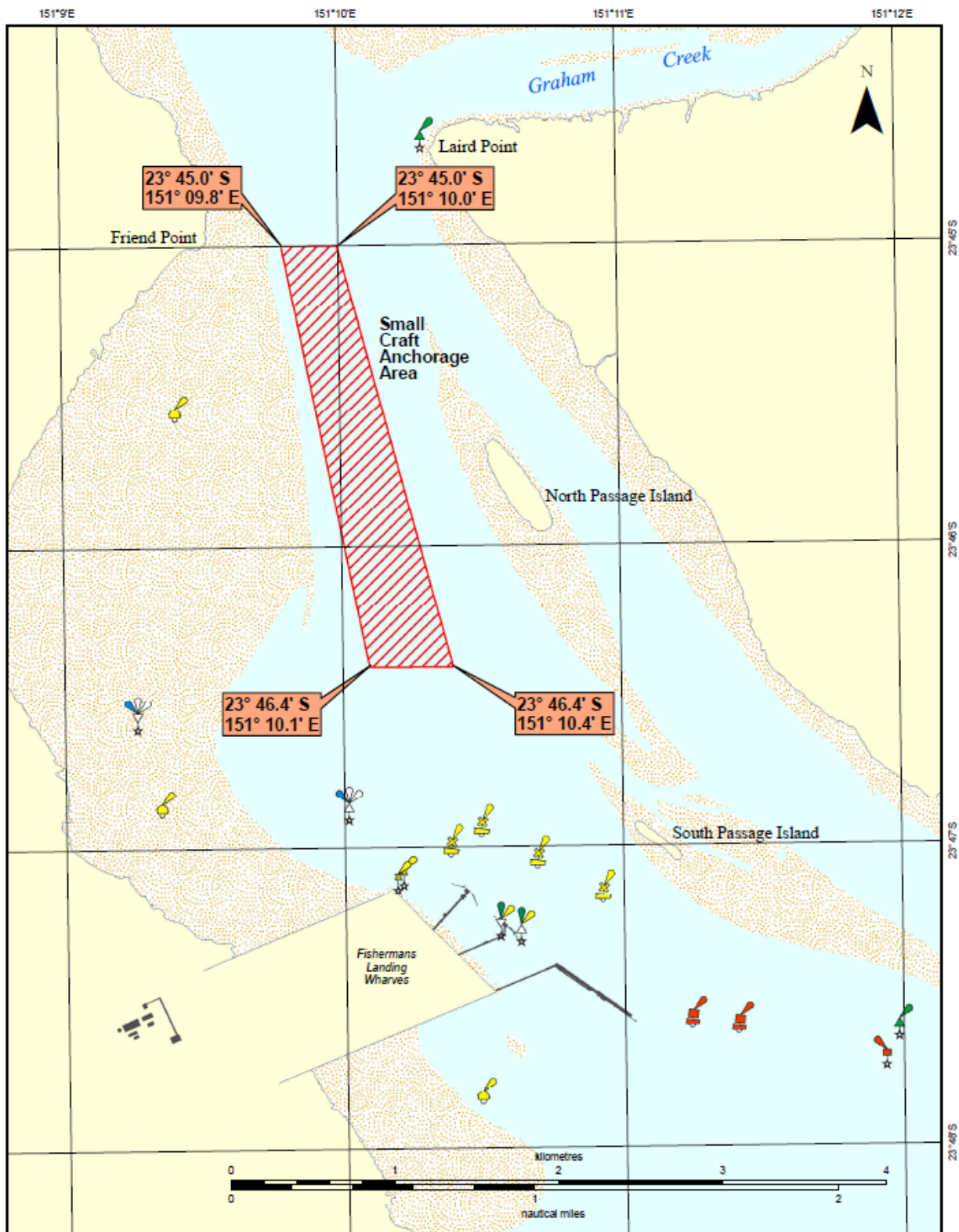
Facing Channel

Latitude longitude

23° 49.11' S 151° 19.02' E
23° 50.12' S 151° 19.50' E
23° 50.23' S 151° 19.72' E
23° 50.14' S 151° 19.90' E
23° 49.43' S 151° 19.59' E
23° 49.05' S 151° 19.31' E

Gladstone Ports Corporation (GPC) is responsible for the management of these small craft anchorage areas. Permission must be sought from GPC prior to any anchoring or mooring.

Mariners are requested to navigate this area with caution passing at slow speed with minimal wash.



Horizontal datum: GDA94
 Map projection: MGA 56

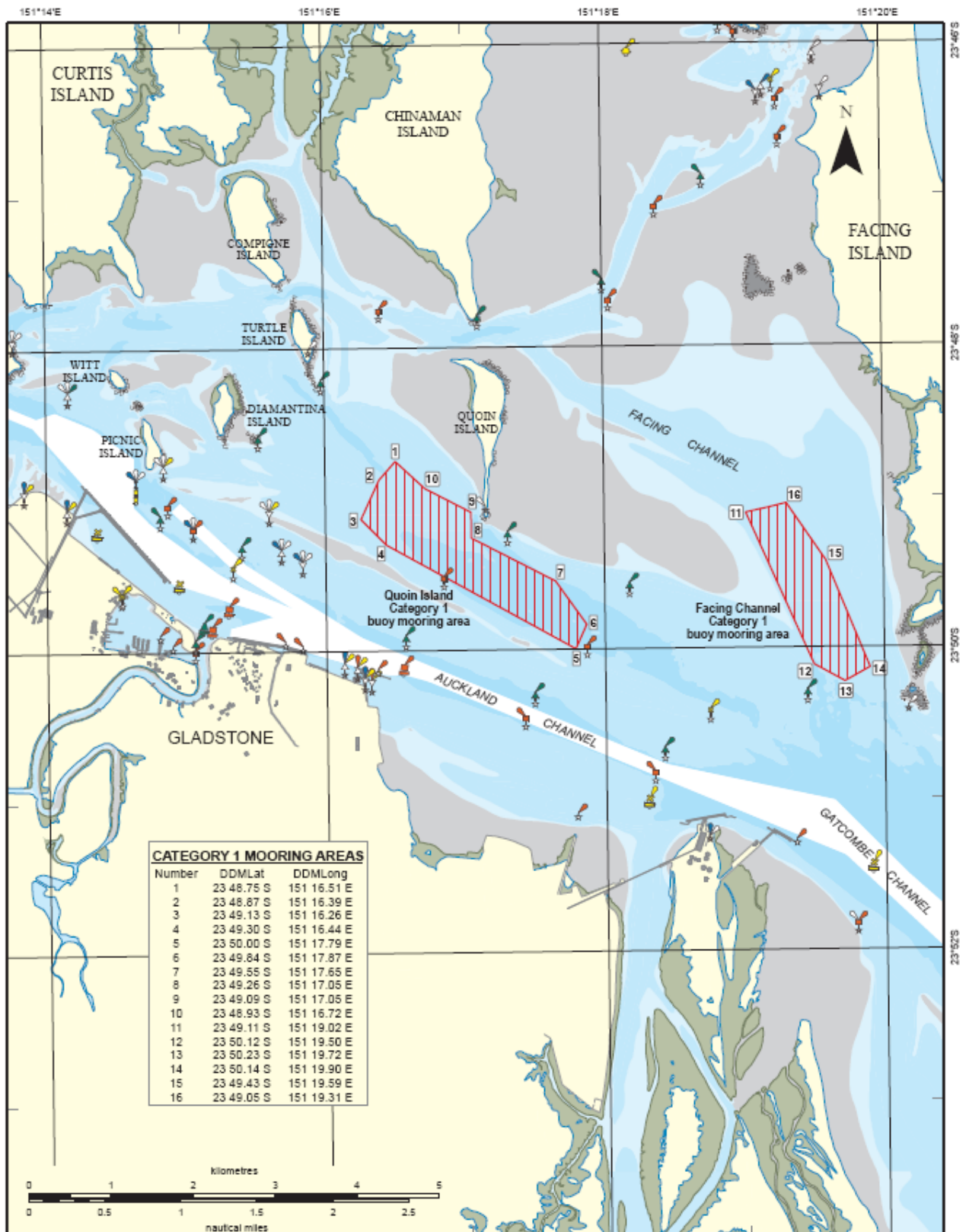
Map: C2-157

Prepared 23 November 2010
 Maritime Safety Queensland
 Spatial Services Unit

Small Craft Anchorage Area GLADSTONE (Restrictions Apply)

© The State of Queensland
 (Department of Transport and Main Roads) 2010
 To view a copy of the licence visit
<http://creativecommons.org/licenses/by-nc-nd/3.0/au>





Horizontal datum: GDA94
 Map projection: MGA 56

Map: S80-21

Prepared 22 August 2011
 Maritime Safety Queensland
 Spatial Services Unit

Port of Gladstone

Category 1 Buoy Mooring Areas

© The State of Queensland
 (Department of Transport and Main Roads) 2011
 To view a copy of the licence, visit
<http://creativecommons.org/licenses/by-nc-nd/3.0/au>

