






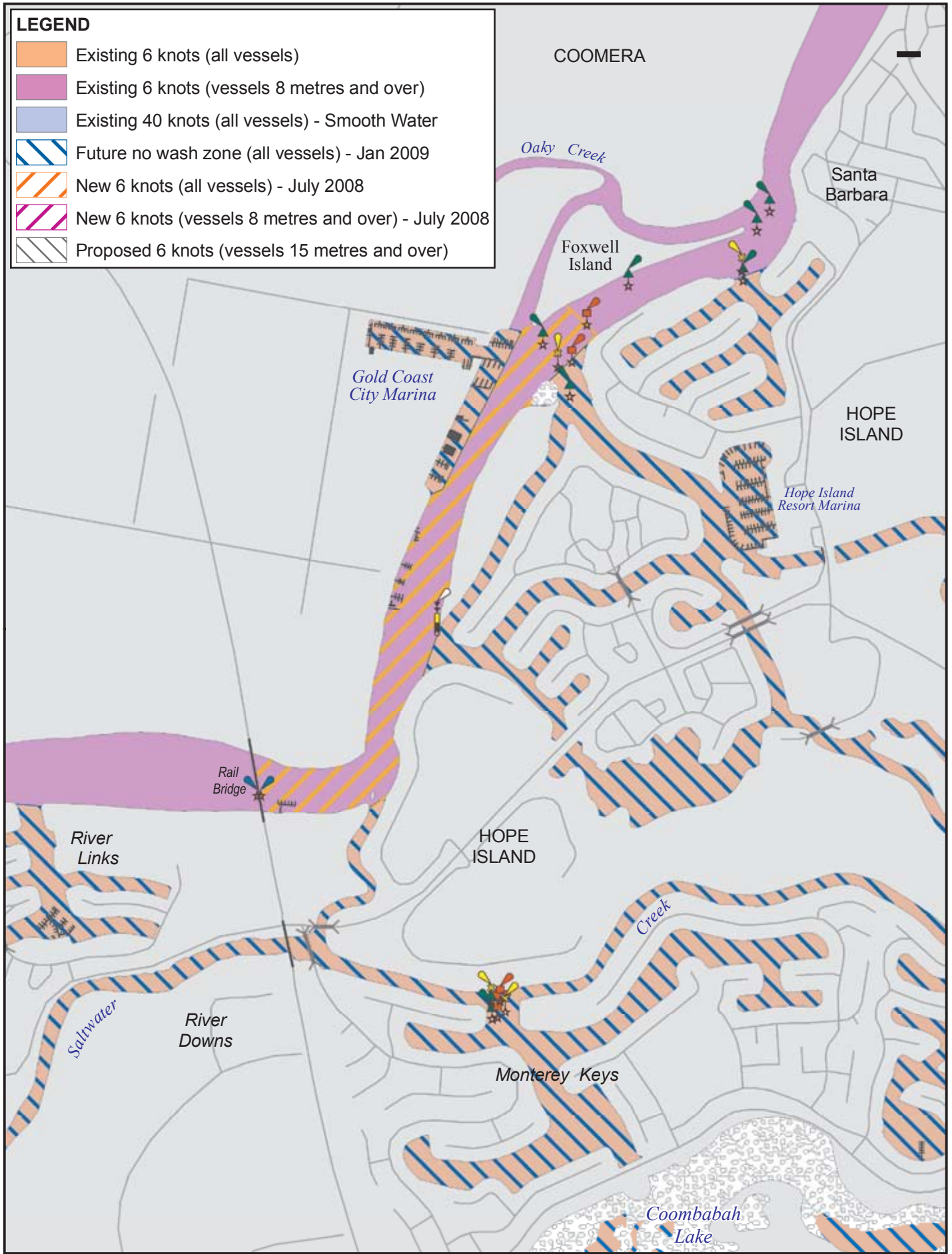


LEGEND

-  Existing 6 knots (all vessels)
-  Existing 6 knots (vessels 8 metres and over)
-  Existing 40 knots (all vessels) - Smooth Water
-  Future no wash zone (all vessels) - Jan 2009
-  New 6 knots (all vessels) - July 2008
-  New 6 knots (vessels 8 metres and over) - July 2008
-  Proposed 6 knots (vessels 15 metres and over)



GOLD COAST - NEW SPEED LIMITS
 (Comparison with existing gazetted speed limits)
Map 6 - Coomera River, Gold Coast City Marina Precinct

Map S9-86

Copyright: The State of Qld 2008
 Prepared 3 June 2008
 Maritime Safety Qld - Spatial Services

