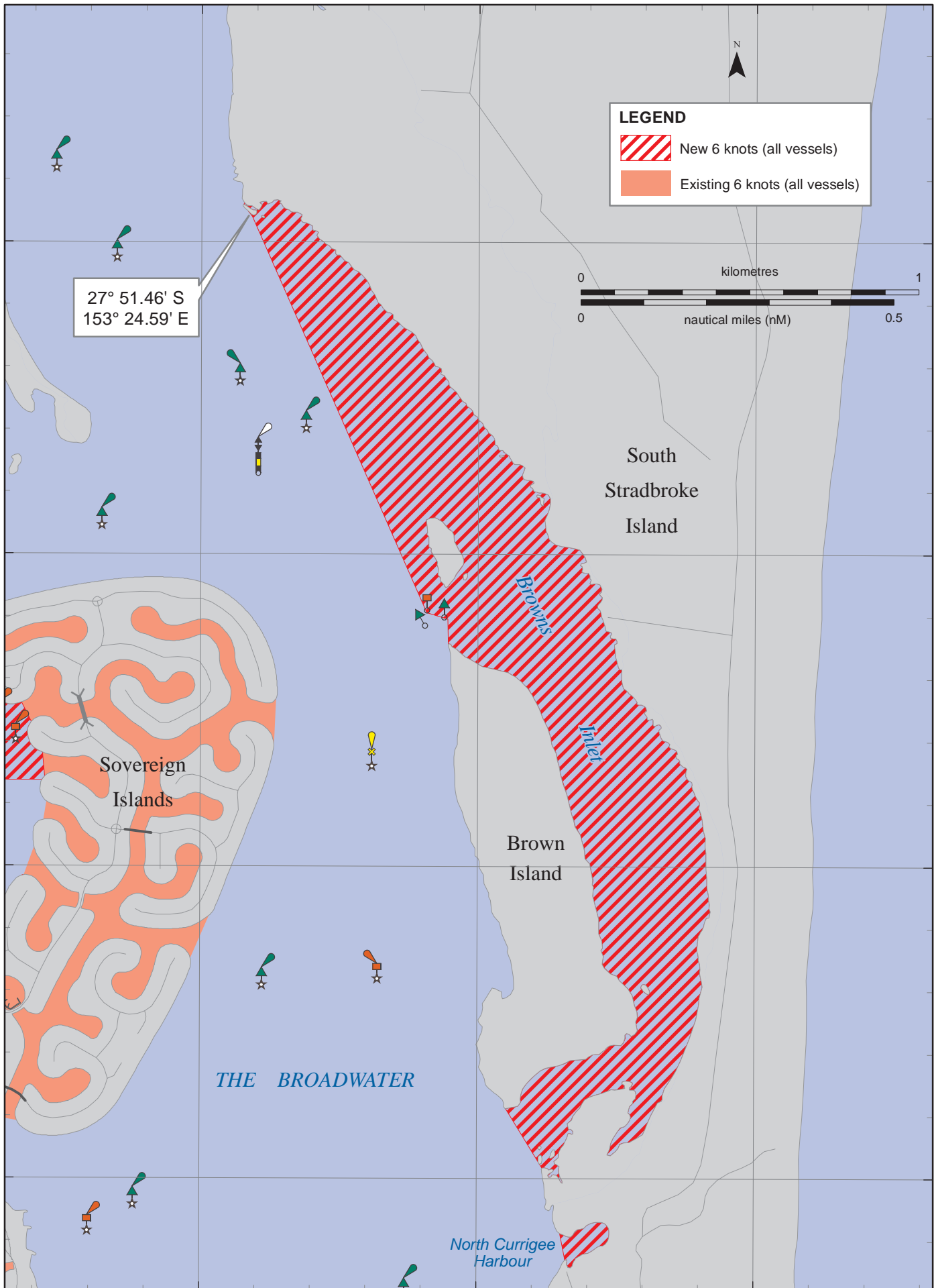


153°24.5'E



153°25'E

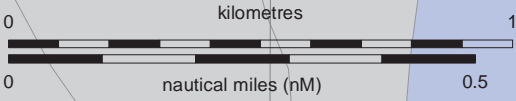
153°25.5'E



27° 51.46' S
153° 24.59' E

LEGEND

-  New 6 knots (all vessels)
-  Existing 6 knots (all vessels)



27°51.5'S

27°52'S

27°52.5'S

27°53'S

Not for Navigation
Horizontal datum: GDA94 (WGS84 compatible)
Projection: Transverse Mercator MGA Zone 56

Speed restriction for all vessels under the
Transport Operations (Marine Safety) Regulation 2004

© The State of Queensland
(Dept of Transport and Main Roads) 2010
To view a copy of the licence, visit
<http://creativecommons.org/licenses/by-nc-nd/3.0/au>

Map S8sp-14

Prepared 9 December 2010
Maritime Safety Queensland - Spatial Services

BROWNS INLET

6 knot speed restriction (all vessels)

