

Maritime Safety Queensland



Urangan Pier

Beacon to Beacon Guide

Great Sandy Strait

Published by

Maritime Safety Queensland

© Copyright The State of Queensland
(Department of Transport and Main Roads) 2021



To view a copy of this licence, visit
<https://creativecommons.org/licenses/by/4.0/>

For commercial use terms and conditions

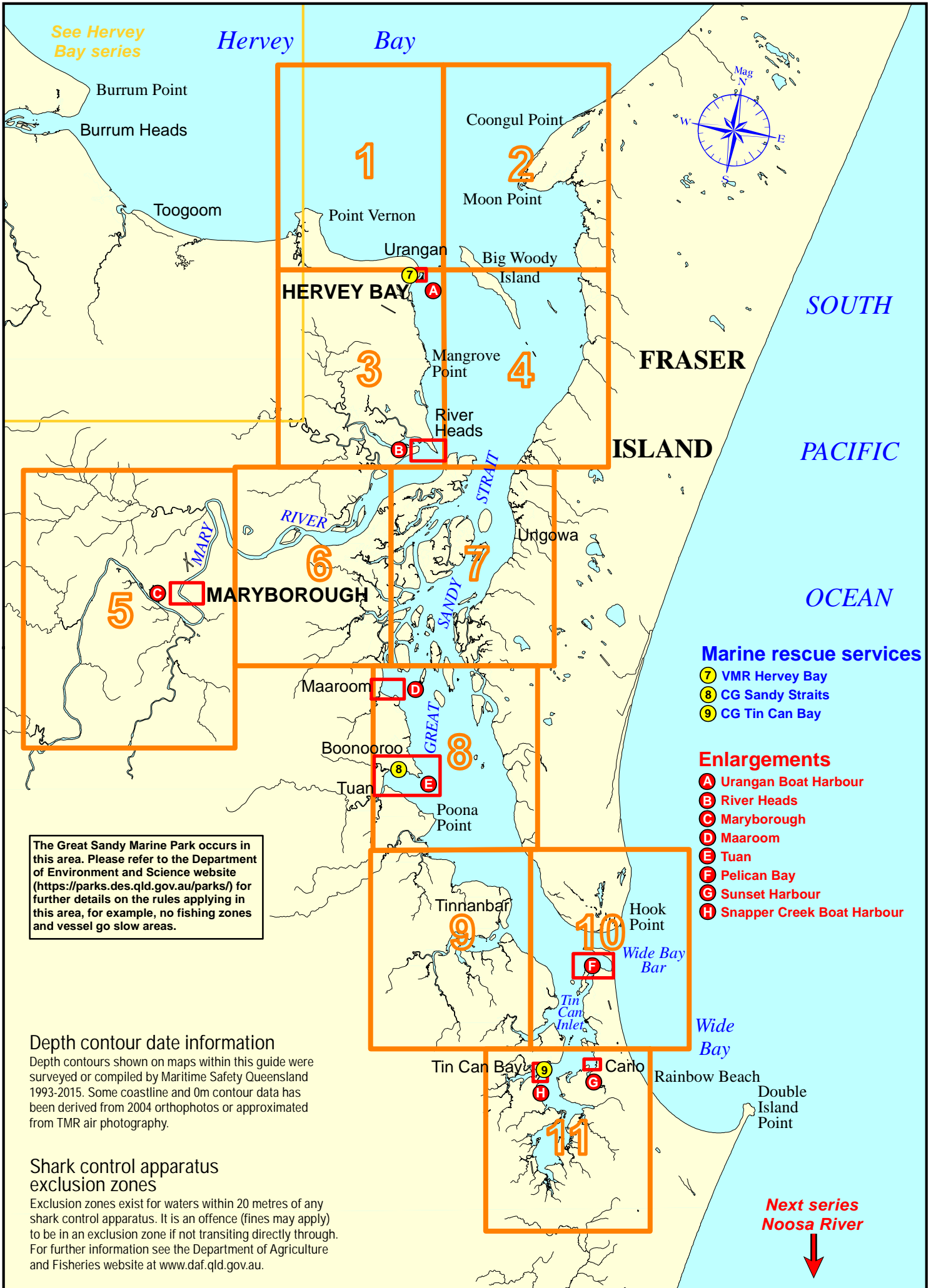
Please visit the Maritime Safety Queensland website at www.msq.qld.gov.au

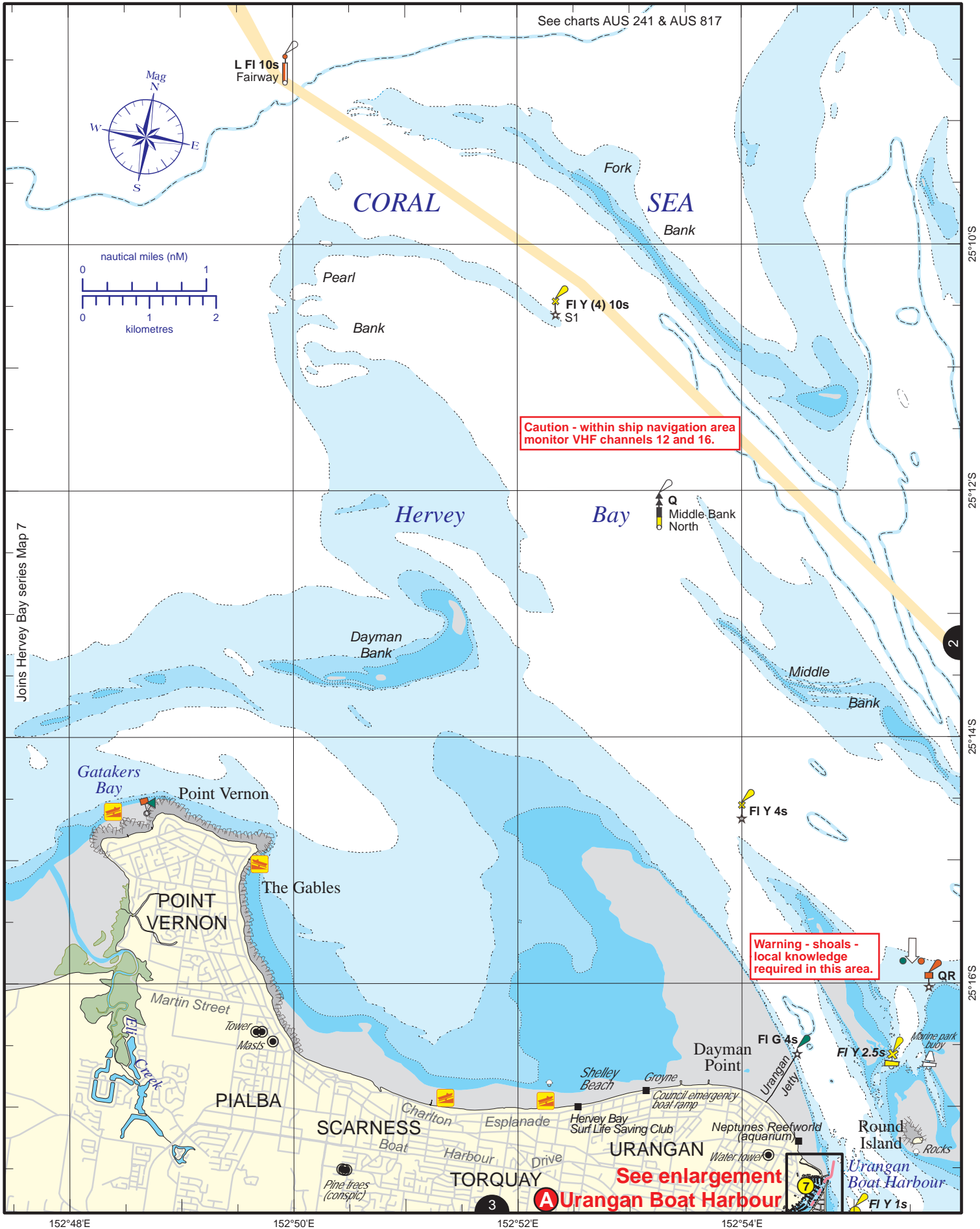
'How to' use this guide

Use this Beacon to Beacon Guide with the 'How to' and legend booklet available from www.msq.qld.gov.au



**Queensland
Government**





Always keep a proper lookout when boating.

Nautical information current to 28 January 2016

Look up and live for power and cable crossings that may not be shown on these maps due to scale or recent construction.

CAUTION: depth contours have not been re-surveyed in most areas since the 2011 and 2013 floods.

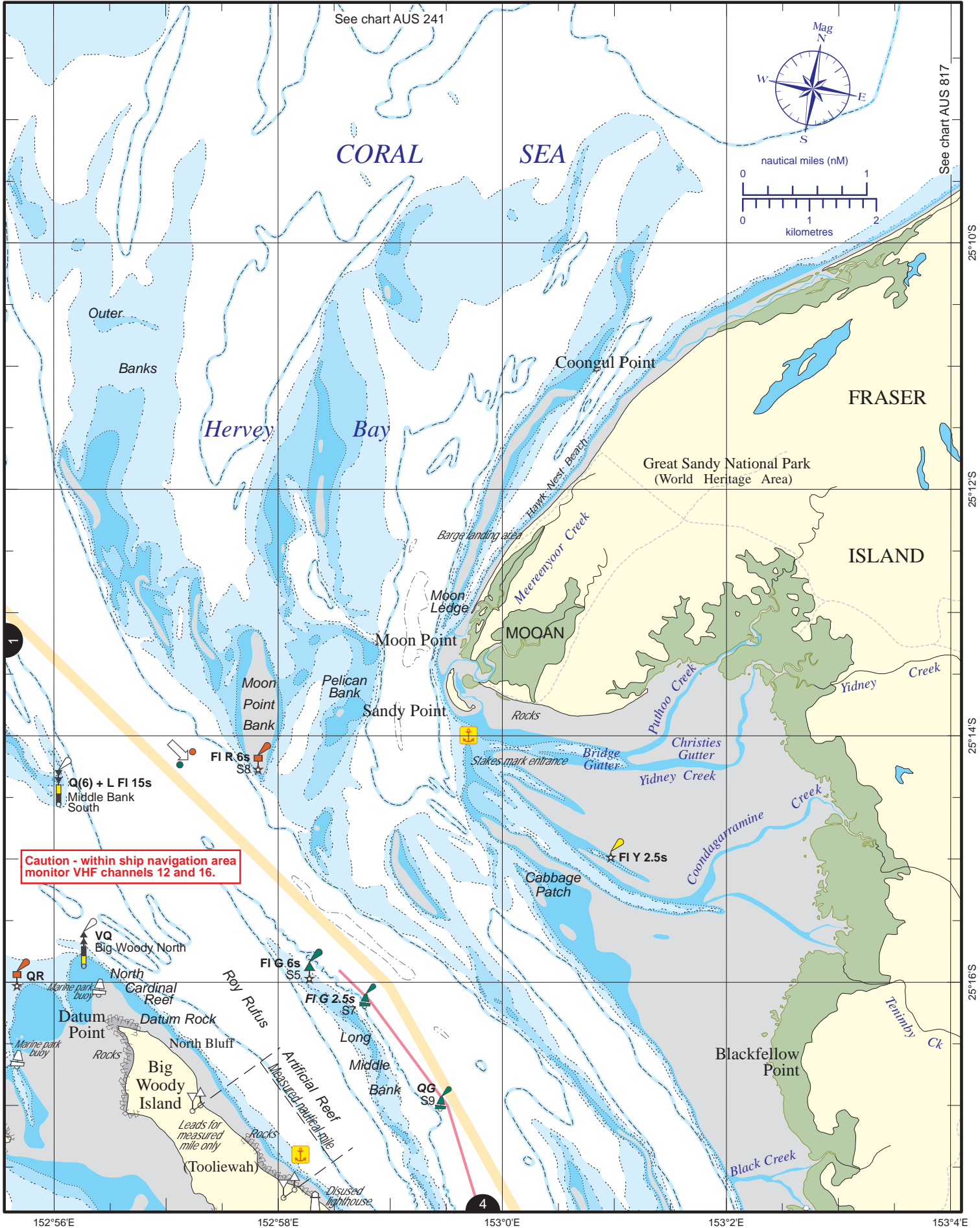
Exercise care when travelling outside suggested navigation tracks.

© Copyright The State of Queensland 2016

Queensland Department of Transport and Main Roads - Maritime Safety Queensland.

To reproduce any map within this series, see terms and conditions at Maritime Safety Queensland's website (www.msq.qld.gov.au)





Always keep a proper lookout when boating.

Nautical information current to 28 January 2016

Look up and live for power and cable crossings that may not be shown on these maps due to scale or recent construction.

CAUTION: depth contours have not been re-surveyed in most areas since the 2011 and 2013 floods.

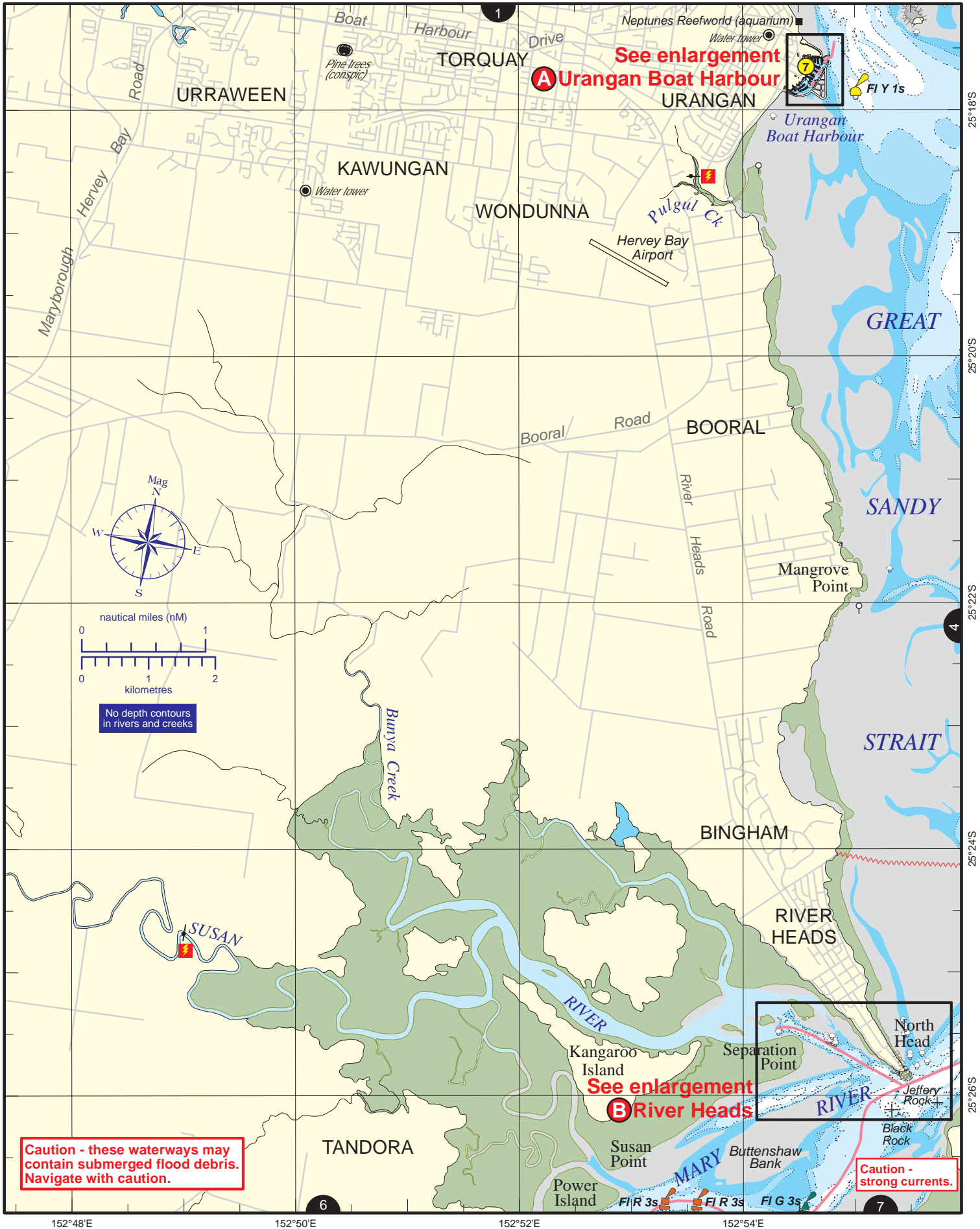
Exercise care when travelling outside suggested navigation tracks.

© Copyright The State of Queensland 2016

Queensland Department of Transport and Main Roads - Maritime Safety Queensland.

To reproduce any map within this series, see terms and conditions at Maritime Safety Queensland's website (www.msq.qld.gov.au)





Always keep a proper lookout when boating.

Nautical information current to 28 January 2016

Look up and live for power and cable crossings that may not be shown on these maps due to scale or recent construction.

CAUTION: depth contours have not been re-surveyed in most areas since the 2011 and 2013 floods.

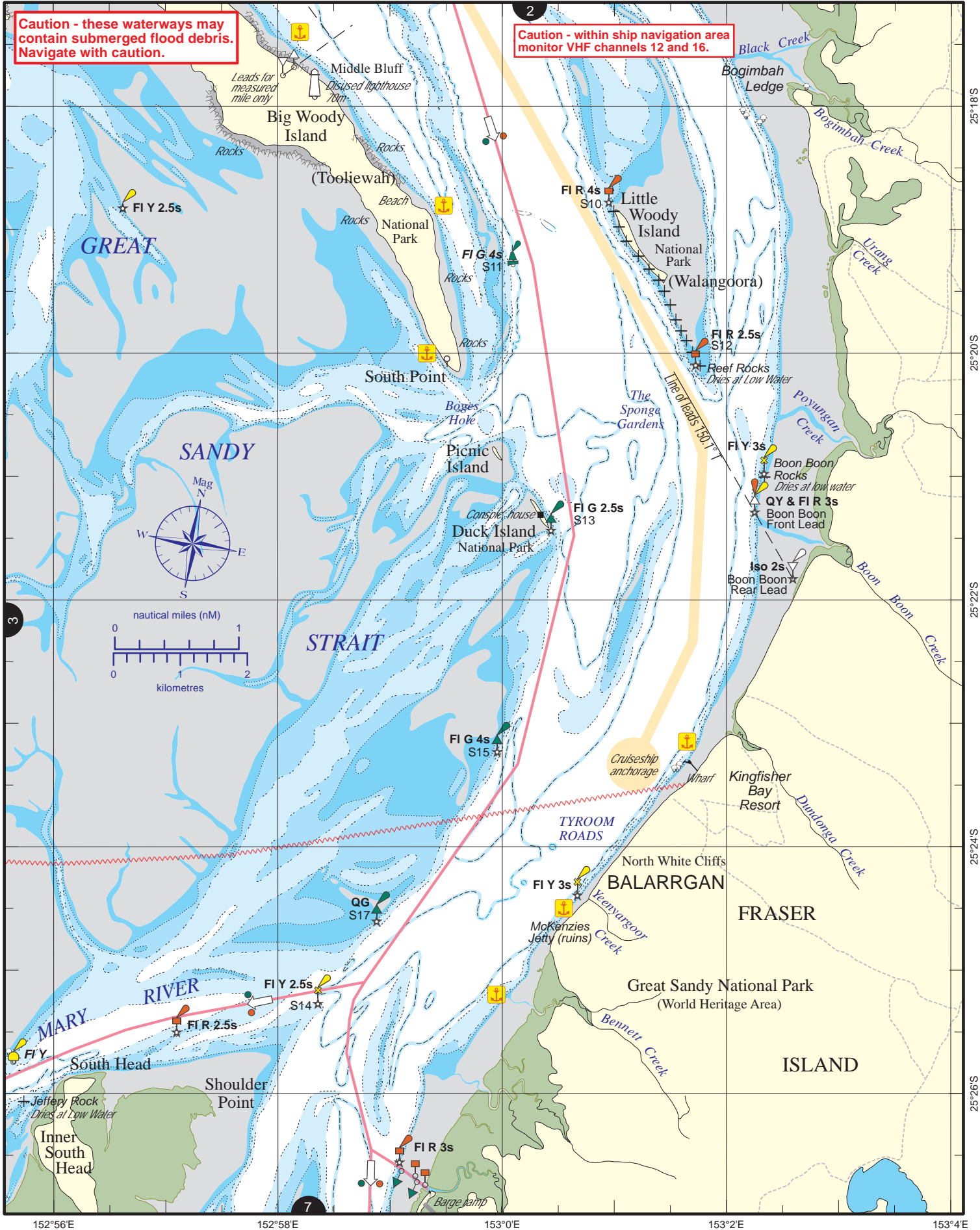
Exercise care when travelling outside suggested navigation tracks.

© Copyright The State of Queensland 2016

Queensland Department of Transport and Main Roads - Maritime Safety Queensland.

To reproduce any map within this series, see terms and conditions at Maritime Safety Queensland's website (www.msq.qld.gov.au)





Always keep a proper lookout when boating. Nautical information current to 28 January 2016

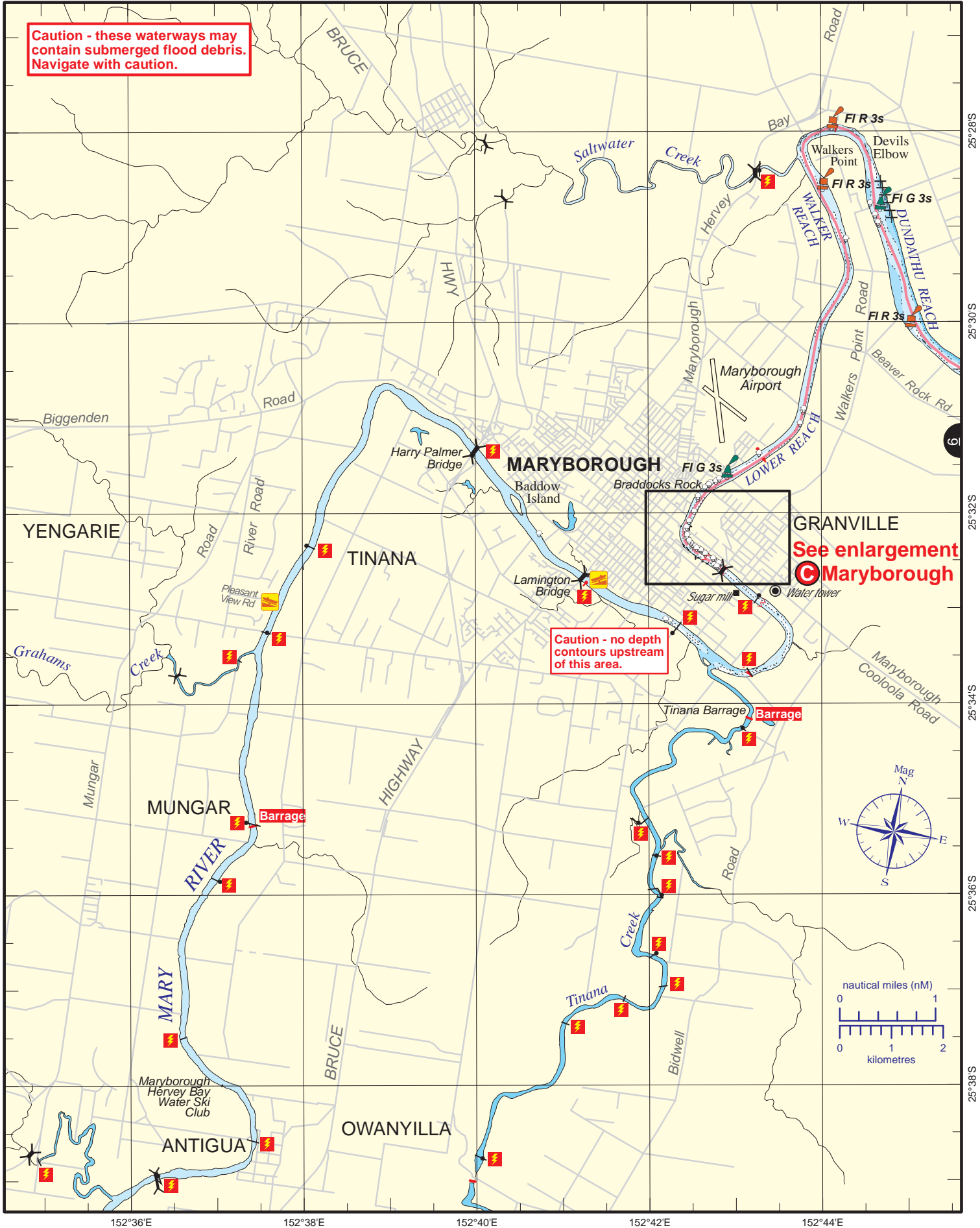
Look up and live for power and cable crossings that may not be shown on these maps due to scale or recent construction.

CAUTION: depth contours have not been re-surveyed in most areas since the 2011 and 2013 floods.

Exercise care when travelling outside suggested navigation tracks.

© Copyright The State of Queensland 2016
 Queensland Department of Transport and Main Roads - Maritime Safety Queensland.
 To reproduce any map within this series, see terms and conditions at Maritime Safety Queensland's website (www.msq.qld.gov.au)

Queensland Government



Always keep a proper lookout when boating.

Nautical information current to 28 January 2016

Look up and live for power and cable crossings that may not be shown on these maps due to scale or recent construction.

CAUTION: depth contours have not been re-surveyed in most areas since the 2011 and 2013 floods.

Exercise care when travelling outside suggested navigation tracks.

© Copyright The State of Queensland 2016

Queensland Department of Transport and Main Roads - Maritime Safety Queensland.

To reproduce any map within this series, see terms and conditions at Maritime Safety Queensland's website (www.msq.qld.gov.au)





Always keep a proper lookout when boating.

Nautical information current to 28 January 2016

Look up and live for power and cable crossings that may not be shown on these maps due to scale or recent construction.

CAUTION: depth contours have not been re-surveyed in most areas since the 2011 and 2013 floods.

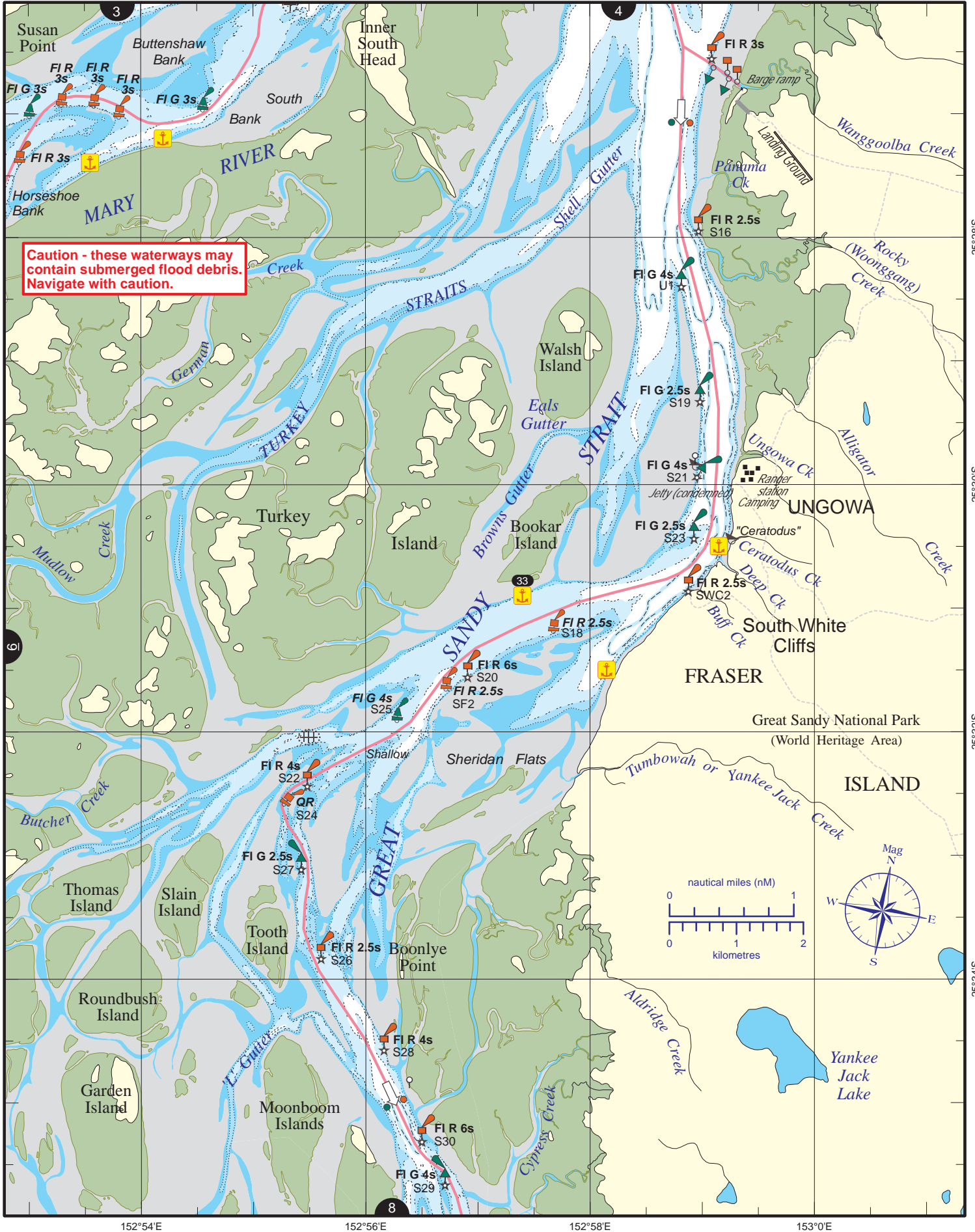
Exercise care when travelling outside suggested navigation tracks.

© Copyright The State of Queensland 2016

Queensland Department of Transport and Main Roads - Maritime Safety Queensland.

To reproduce any map within this series, see terms and conditions at Maritime Safety Queensland's website (www.msq.qld.gov.au)





Caution - these waterways may contain submerged flood debris. Navigate with caution.





Always keep a proper lookout when boating.
 Look up and live for power and cable crossings that may not be shown on these maps due to scale or recent construction.
CAUTION: depth contours have not been re-surveyed in most areas since the 2011 and 2013 floods.
 Exercise care when travelling outside suggested navigation tracks.

Nautical information current to 28 January 2016

© Copyright The State of Queensland 2016
 Queensland Department of Transport and Main Roads - Maritime Safety Queensland.
 To reproduce any map within this series, see terms and conditions at Maritime Safety Queensland's website (www.msq.qld.gov.au)

CC BY

Queensland Government



Always keep a proper lookout when boating.

Nautical information current to 28 January 2016

Look up and live for power and cable crossings that may not be shown on these maps due to scale or recent construction.

CAUTION: depth contours have not been re-surveyed in most areas since the 2011 and 2013 floods.

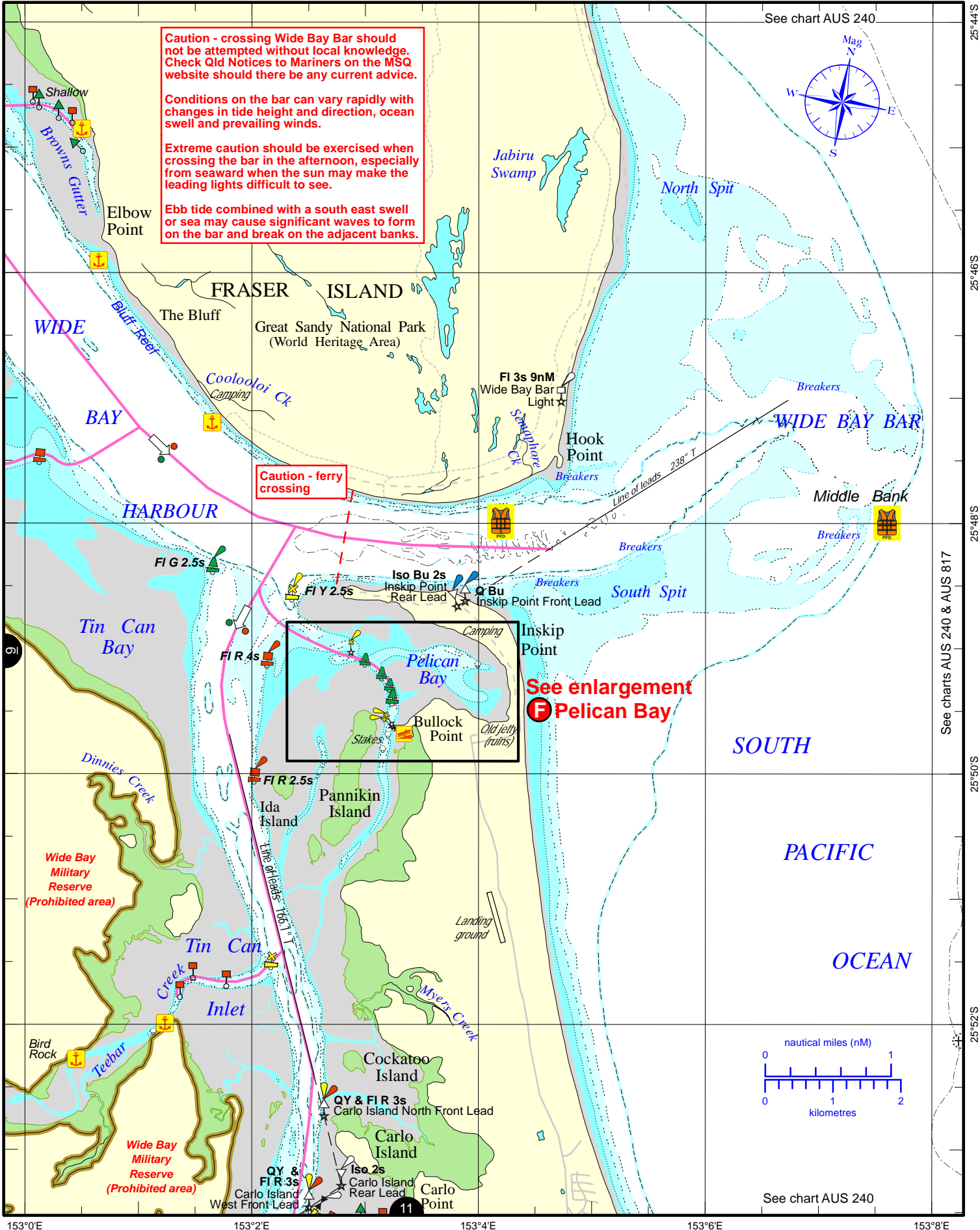
Exercise care when travelling outside suggested navigation tracks.

© Copyright The State of Queensland 2016

Queensland Department of Transport and Main Roads - Maritime Safety Queensland.

To reproduce any map within this series, see terms and conditions at Maritime Safety Queensland's website (www.msq.qld.gov.au)





Always keep a proper lookout when boating.

Nautical information current to 2 September 2021

Look up and live for power and cable crossings that may not be shown on these maps due to scale or recent construction.

For depth contour date information, refer to the Key Sheet for this guide. Note that depths may change following floods.

Exercise care when travelling outside suggested navigation tracks.

© Copyright The State of Queensland 2021
 Queensland Department of Transport and Main Roads - Maritime Safety Queensland.
 To reproduce any map within this series, see terms and conditions at Maritime Safety Queensland's website (www.msq.qld.gov.au)

CC BY

Queensland Government

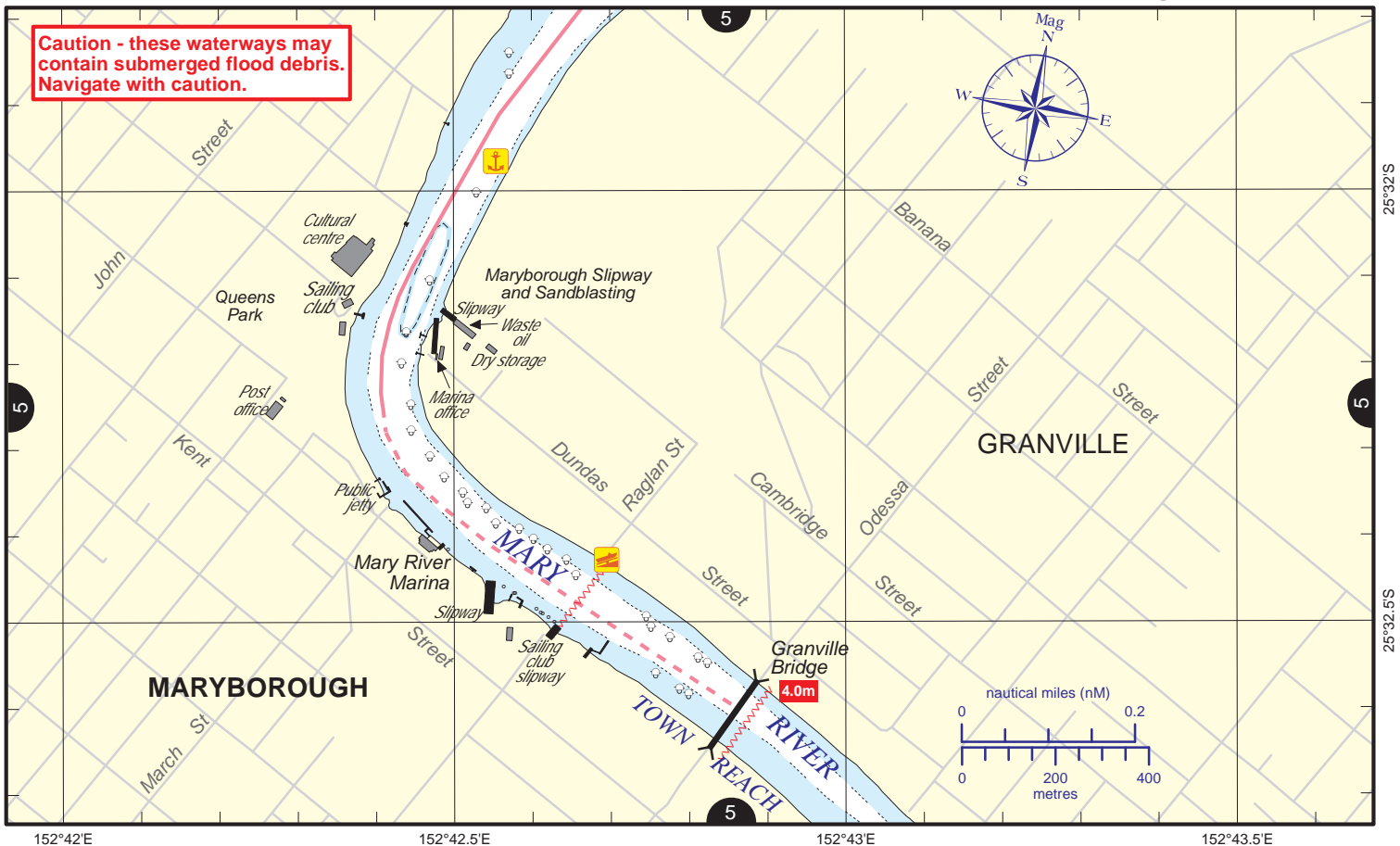
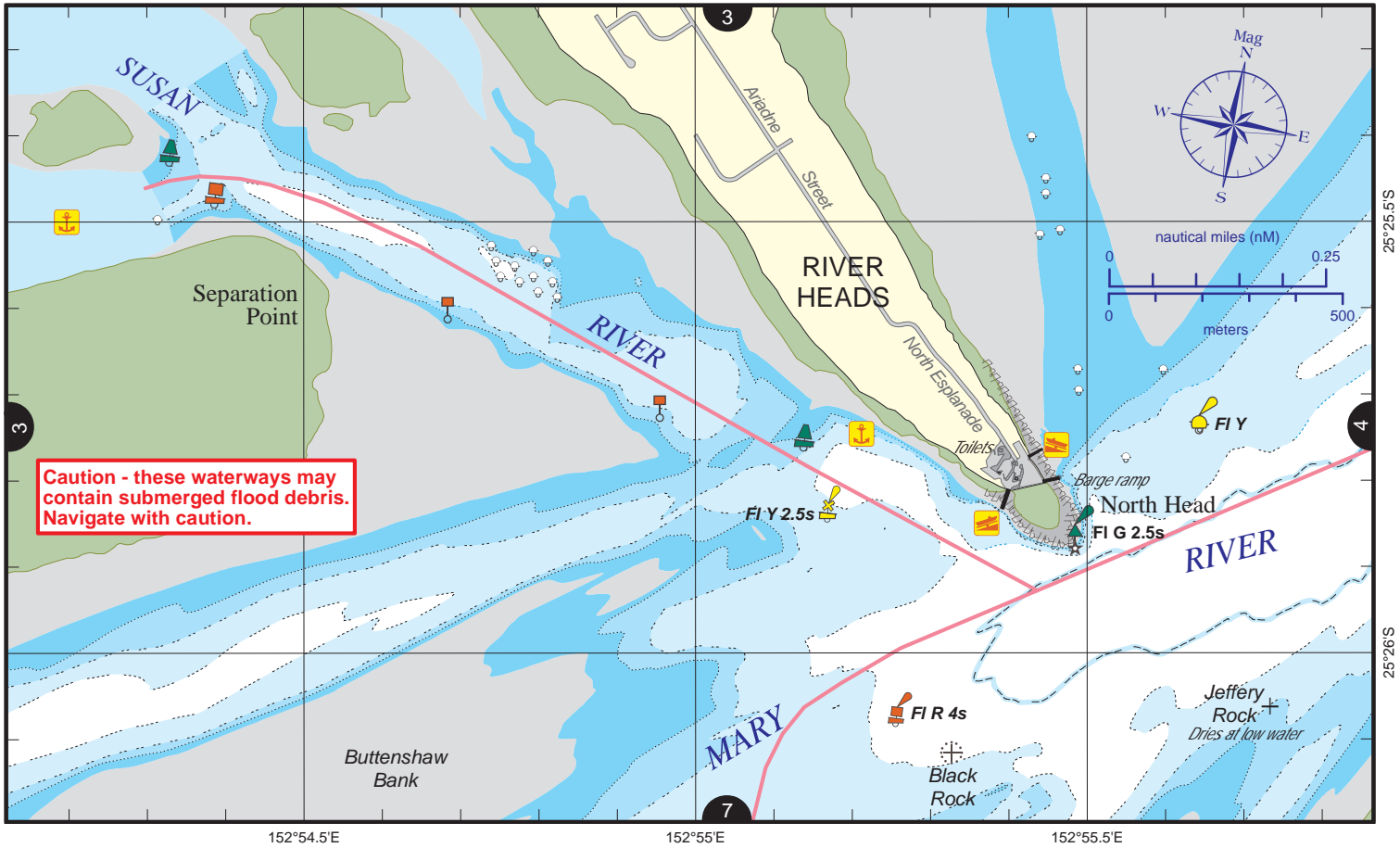


Always keep a proper lookout when boating.
Look up and live for power and cable crossings that may not be shown on these maps due to scale or recent construction.
CAUTION: depth contours have not been re-surveyed in most areas since the 2011 and 2013 floods.
Exercise care when travelling outside suggested navigation tracks.

Nautical information current to 28 January 2016

© Copyright The State of Queensland 2016
 Queensland Department of Transport and Main Roads - Maritime Safety Queensland.
 To reproduce any map within this series, see terms and conditions at Maritime Safety Queensland's website (www.msq.qld.gov.au)





Always keep a proper lookout when boating. Nautical information current to 28 January 2016

Look up and live for power and cable crossings that may not be shown on these maps due to scale or recent construction.

CAUTION: depth contours have not been re-surveyed in most areas since the 2011 and 2013 floods.

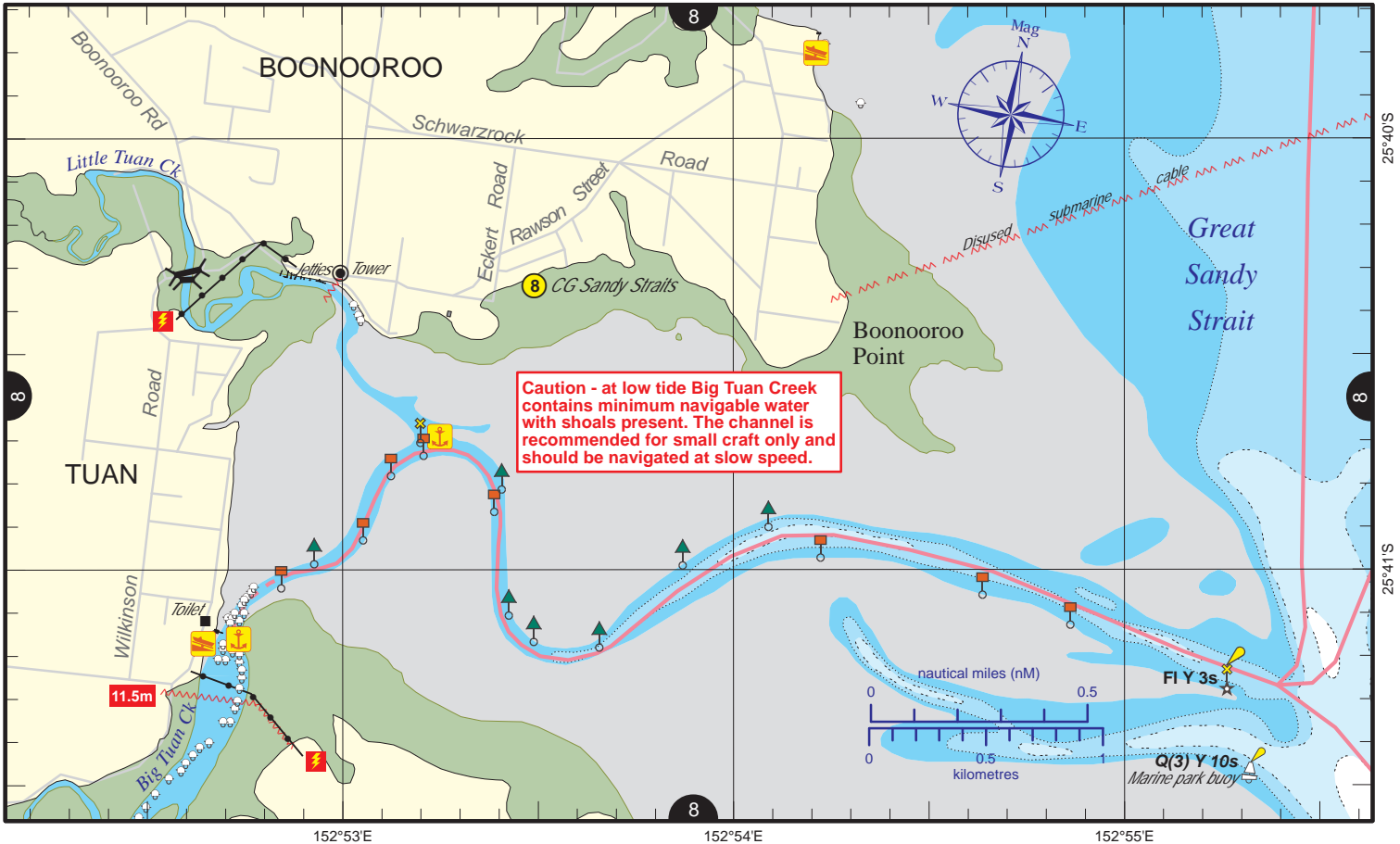
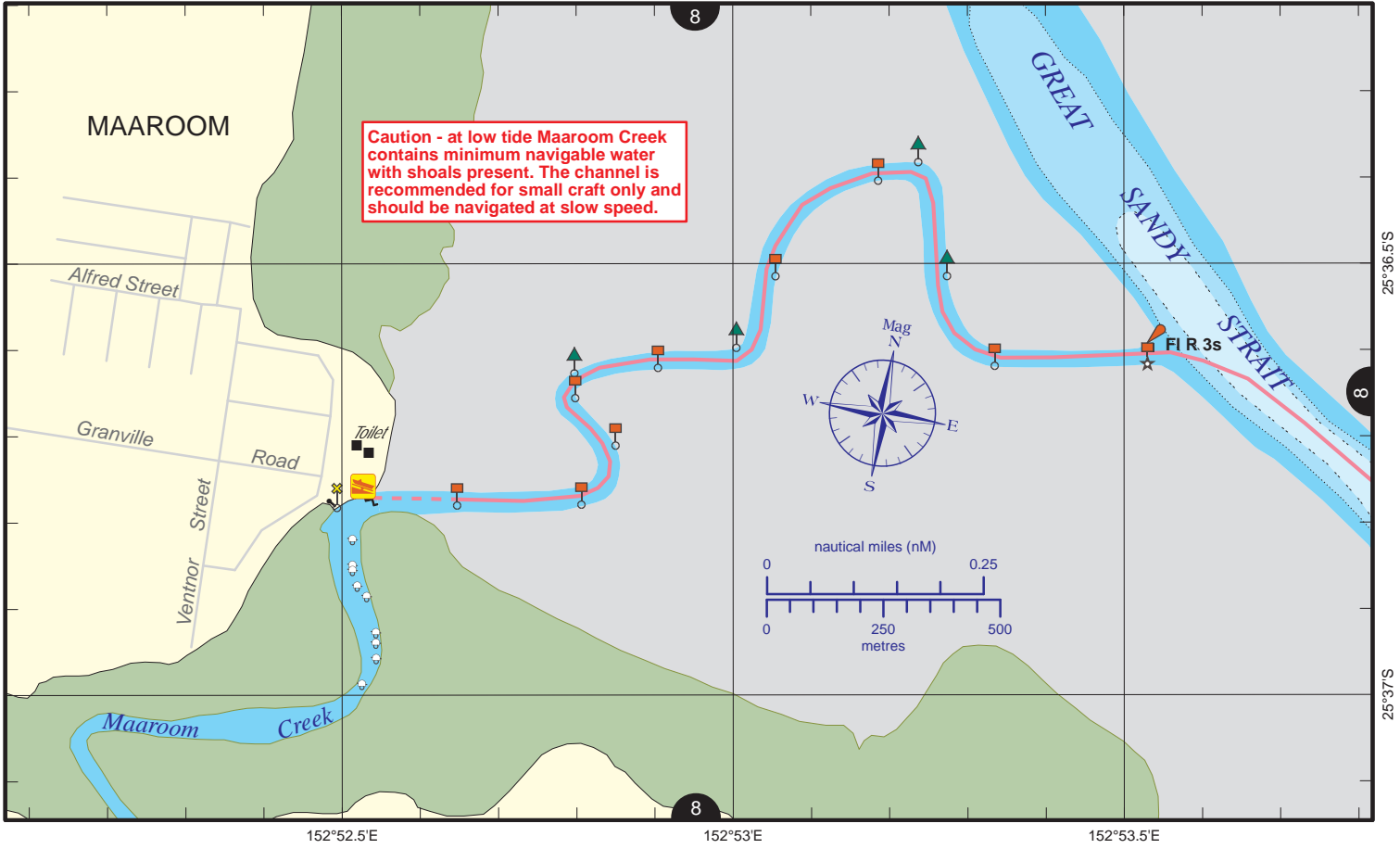
Exercise care when travelling outside suggested navigation tracks.

© Copyright The State of Queensland 2016

Queensland Department of Transport and Main Roads - Maritime Safety Queensland.

To reproduce any map within this series, see terms and conditions at Maritime Safety Queensland's website (www.msq.qld.gov.au)





Always keep a proper lookout when boating.

Nautical information current to 28 January 2016

Look up and live for power and cable crossings that may not be shown on these maps due to scale or recent construction.

CAUTION: depth contours have not been re-surveyed in most areas since the 2011 and 2013 floods.

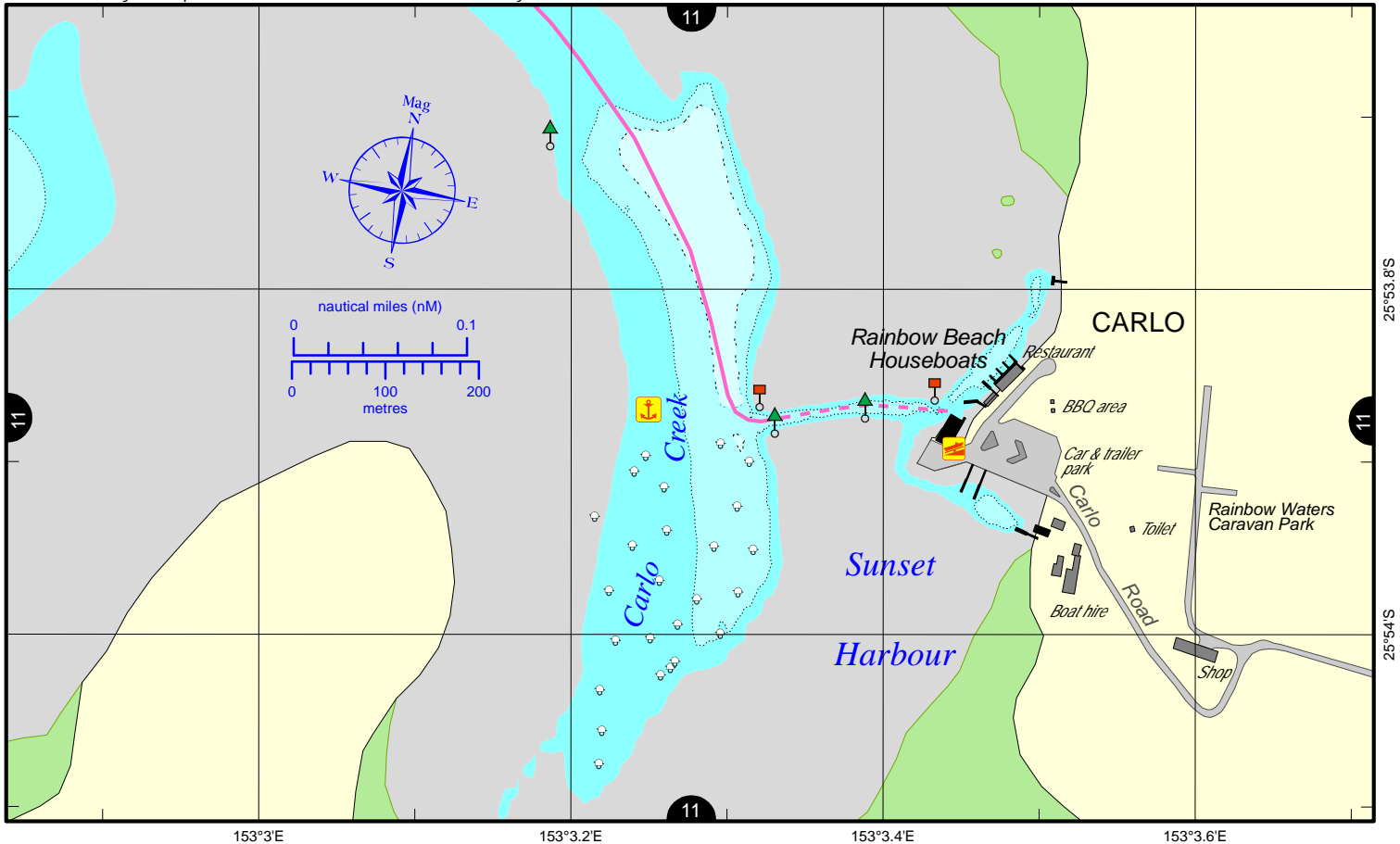
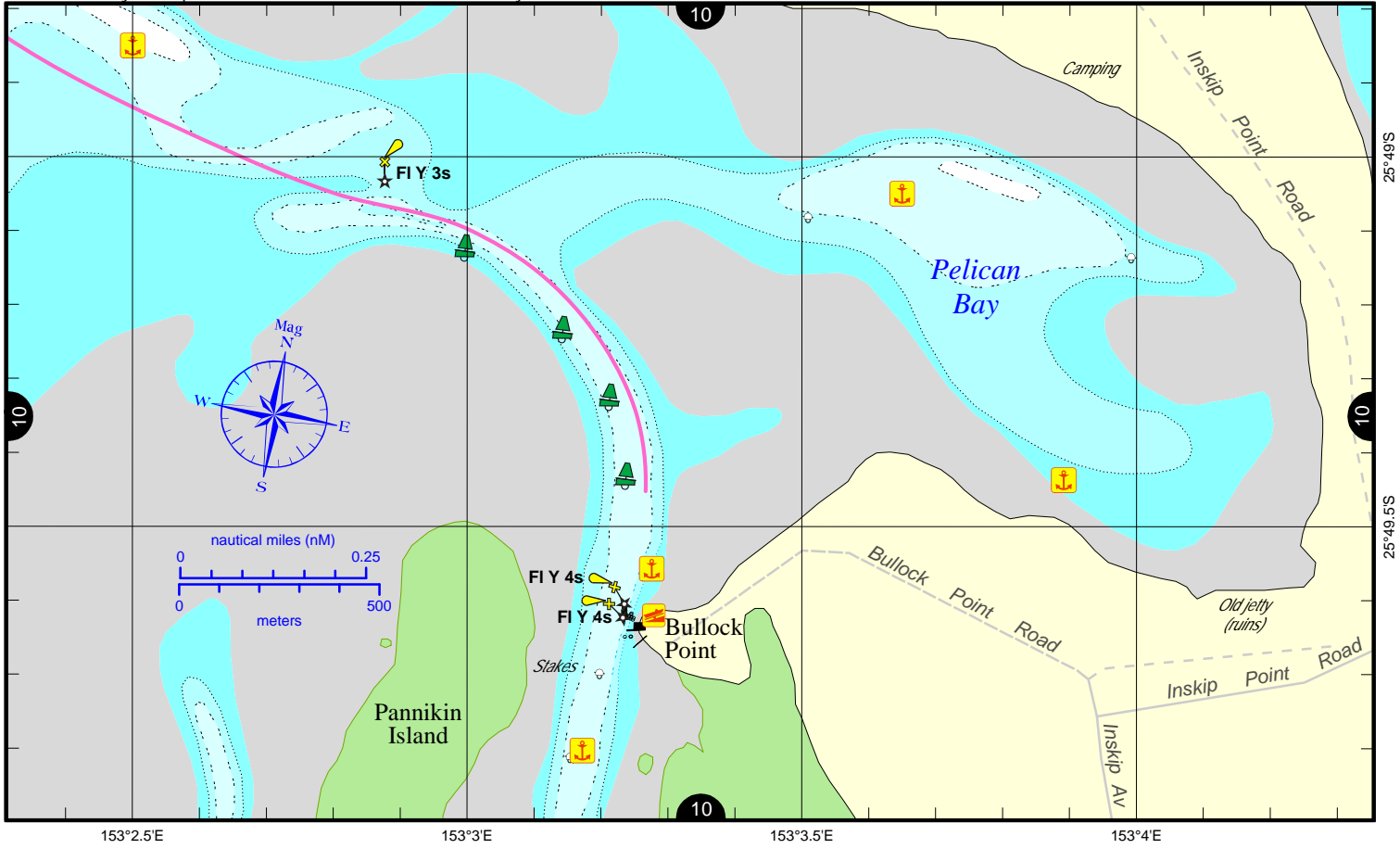
Exercise care when travelling outside suggested navigation tracks.

© Copyright The State of Queensland 2016

Queensland Department of Transport and Main Roads - Maritime Safety Queensland.

To reproduce any map within this series, see terms and conditions at Maritime Safety Queensland's website (www.msq.qld.gov.au)





Always keep a proper lookout when boating.

Nautical information current to 2 September 2021

Look up and live for power and cable crossings that may not be shown on these maps due to scale or recent construction.

For depth contour date information, refer to the Key Sheet for this guide. Note that depths may change following floods.

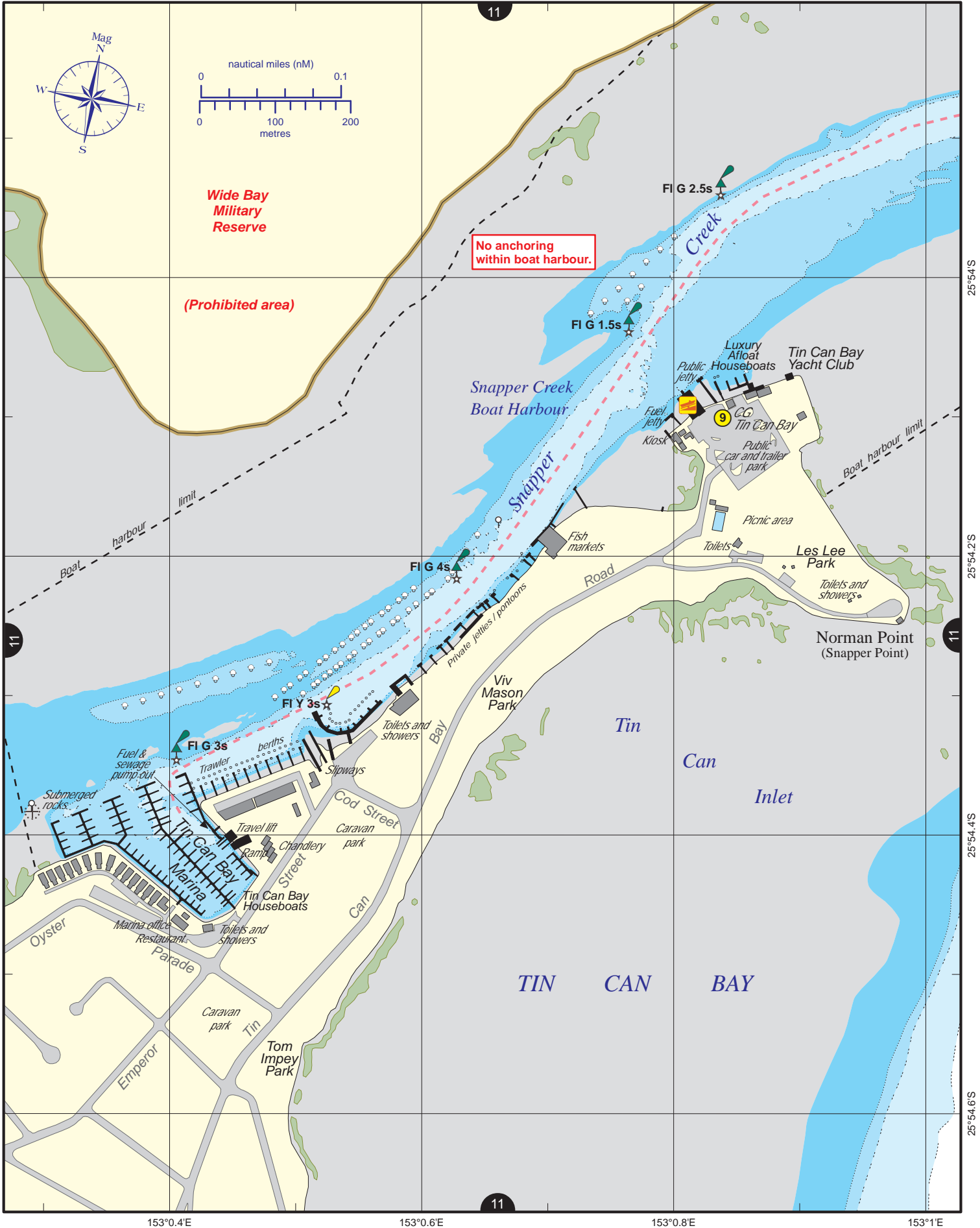
Exercise care when travelling outside suggested navigation tracks.

© Copyright The State of Queensland 2021

Queensland Department of Transport and Main Roads - Maritime Safety Queensland.

To reproduce any map within this series, see terms and conditions at Maritime Safety Queensland's website (www.msq.qld.gov.au)





Always keep a proper lookout when boating.

Nautical information current to 28 January 2016

Look up and live for power and cable crossings that may not be shown on these maps due to scale or recent construction.

CAUTION: depth contours have not been re-surveyed in most areas since the 2011 and 2013 floods.

Exercise care when travelling outside suggested navigation tracks.

© Copyright The State of Queensland 2016

Queensland Department of Transport and Main Roads - Maritime Safety Queensland.

To reproduce any map within this series, see terms and conditions at Maritime Safety Queensland's website (www.msq.qld.gov.au)

