

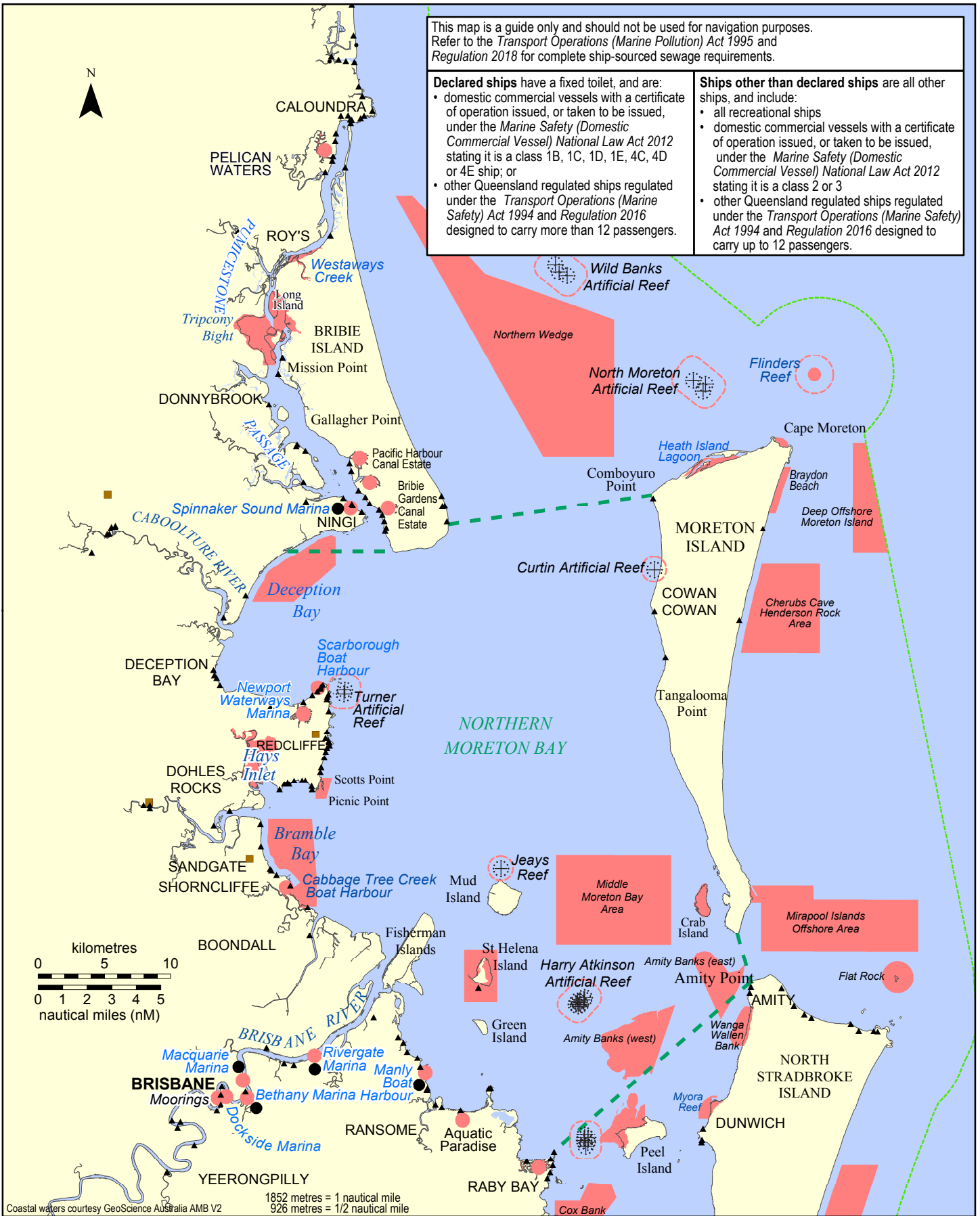
This map is a guide only and should not be used for navigation purposes. Refer to the *Transport Operations (Marine Pollution) Act 1995* and *Regulation 2018* for complete ship-sourced sewage requirements.

Declared ships have a fixed toilet, and are:

- domestic commercial vessels with a certificate of operation issued, or taken to be issued, under the *Marine Safety (Domestic Commercial Vessel) National Law Act 2012* stating it is a class 1B, 1C, 1D, 1E, 4C, 4D or 4E ship; or
- other Queensland regulated ships regulated under the *Transport Operations (Marine Safety) Act 1994* and *Regulation 2016* designed to carry more than 12 passengers.

Ships other than declared ships are all other ships, and include:

- all recreational ships
- domestic commercial vessels with a certificate of operation issued, or taken to be issued, under the *Marine Safety (Domestic Commercial Vessel) National Law Act 2012* stating it is a class 2 or 3
- other Queensland regulated ships regulated under the *Transport Operations (Marine Safety) Act 1994* and *Regulation 2016* designed to carry up to 12 passengers.



LEGEND

- Discharge prohibited
- Northern Moreton Bay Waters
- Coastal waters (3nM limit)
- 926 metre line
- Pump-out station
- Toilet
- Caravan dump station

Discharge permitted with the following restrictions:

- Grade A treated sewage - Discharge permitted (i.e.no further restrictions)
- Grade B treated sewage - No discharge within 700m of a person in the water, aquaculture fisheries resource (e.g. oyster lease) or a reef
- Grade C treated sewage - No discharge within 926m of a person in the water, aquaculture fisheries resource (e.g.oyster lease) or a reef

MAP S31-27-3
 Version 5 - effective 1 September 2018
 Copyright: The State of Queensland 2018
 Prepared 28 August 2018
 Maritime Safety Queensland - Spatial Services

Treated sewage discharge restrictions for ships other than declared ships under the *Transport Operations (Marine Pollution) Act 1995* and *Regulation 2018*

AMITY POINT to CALOUNDRA

Treated sewage - ships other than declared ships

To view a copy of the licence, visit <http://creativecommons.org/licenses/by/4.0/>

SHIP-SOURCED SEWAGE – DISCHARGE REQUIREMENTS FOR THE BRISBANE AREA MAP SERIES (ONLY)

**Sewage discharge requirements for Ships other than Declared Ships under the
*Transport Operations (Marine Pollution) Act 1995 and Regulation 2018***

1st September 2018

All ships with a fixed toilet For all ships with a fixed toilet sewage must first pass through a macerator which can't be bypassed before being discharged into the marine environment, unless the fixed toilet is a composting toilet.

Untreated sewage discharge requirements

Prohibited Discharge Waters
Illegal to discharge in coastal waters that are:
- a boat harbour
- a canal
- a marina
- a designated area
 (a) the marine national park zone under the *Marine Parks (Moreton Bay) Zoning Plan 2008*
 (b) the Noosa River.

Smooth Waters (Includes rivers, creeks and designated smooth waters)
* Illegal to discharge

Northern Moreton Bay waters
*1-15 persons on-board - Illegal to discharge within 1 nautical mile (1852 metres) of a person in the water, or an aquaculture fisheries resources, a reef, or the mean low water mark of an island or the mainland
*16 or more persons on-board - Illegal to discharge
Open Waters
* Illegal to discharge within ½ nautical mile (926m) of a wharf or jetty, other than a jetty that is a marina
* Illegal to discharge within 1 nautical mile (1852 metres) of a person in the water, or aquaculture fisheries resources
* 7 to 15 persons - Illegal to discharge within 1 nautical mile of a reef, the low water mark of an island or the mainland
* 16 or more persons - Illegal to discharge in open waters

Treated Sewage discharge requirements

Prohibited Discharge Waters
Illegal to discharge in coastal waters that are:
- a boat harbour
- a canal
- a marina
- a designated area
 (a) the marine national park zone under the *Marine Parks (Moreton Bay) Zoning Plan 2008*
 (b) the Noosa River.

Northern Moreton Bay Waters, Smooth Waters and Open Waters
Illegal to discharge Grade C Treated Sewage within ½ nautical mile (926 metres) of
- a person in the water
- aquaculture fisheries resources
- reef

Illegal to discharge Grade B Treated Sewage within 700 m of:
- a person in the water
- aquaculture resources
- a reef.

Illegal to discharge Grade A Treated Sewage in prohibited discharge waters
- No other restrictions

On-Board Documents

All vessels with a sewage treatment sytem are required to have the following on-board and available for inspection:
- Sewage treatment system manufacturer's details
- Sewage treatment system documentation
- Sewage treatment system service manual
- Sewage treatment system service records including maintenance and assessment documentation