

150°40'E

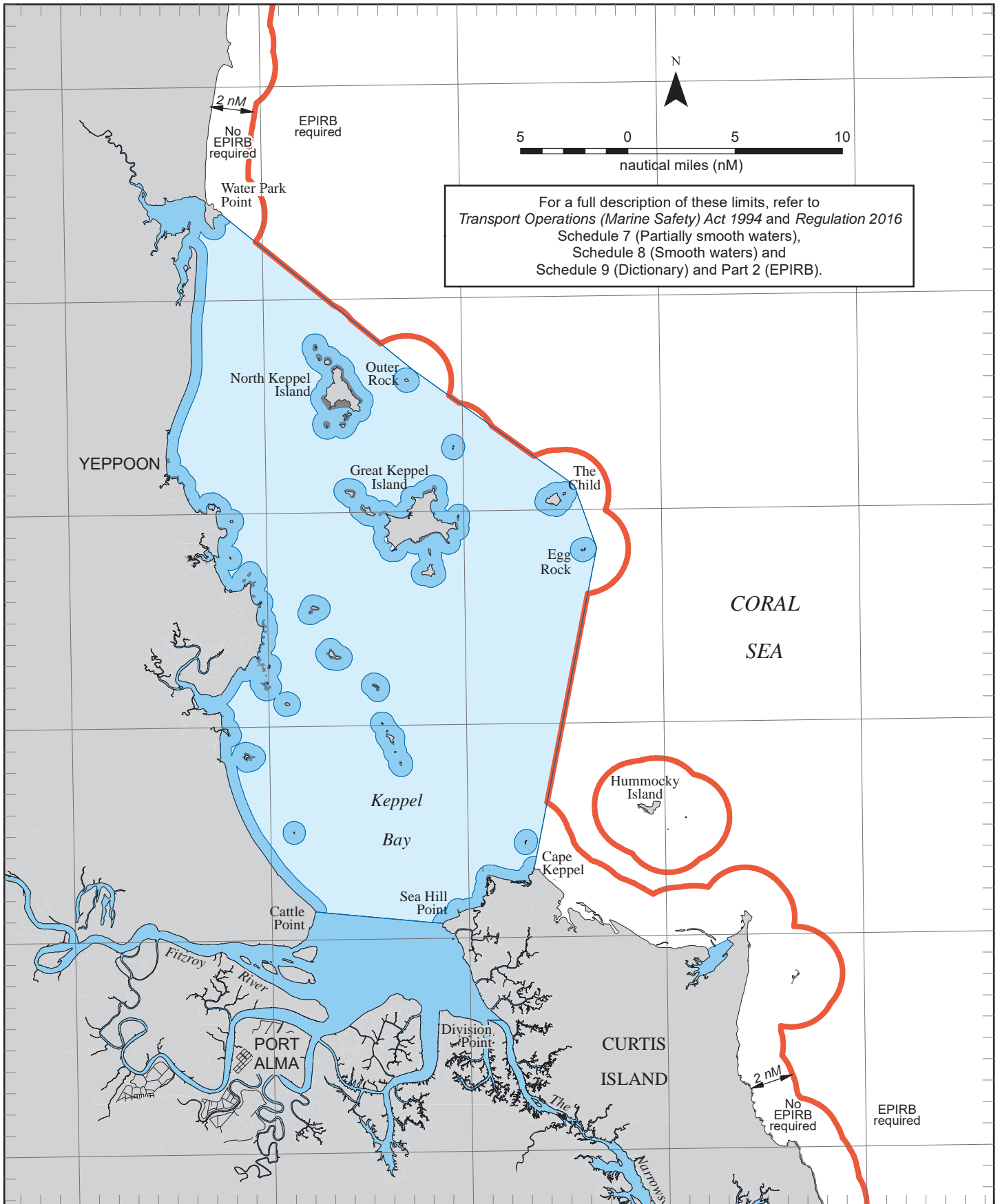
150°50'E

151°0'E

151°10'E

151°20'E

22°50'S
23°0'S
23°10'S
23°20'S
23°30'S
23°40'S



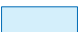


For a full description of these limits, refer to
Transport Operations (Marine Safety) Act 1994 and Regulation 2016
 Schedule 7 (Partially smooth waters),
 Schedule 8 (Smooth waters) and
 Schedule 9 (Dictionary) and Part 2 (EPIRB).

"Smooth waters" (as described in Schedule 9) means the waters-

- of rivers, creeks, streams and lakes; or
- within breakwaters or revetments; or
- described in Schedule 7 that are within 0.5 nautical mile from land; or
- described in Schedule 8.

"Partially smooth waters" means the waters-

- described in Schedule 7, other than waters within 0.5 nautical mile from land.

-  Partially smooth waters
-  Smooth waters
-  The EPIRB 2 nautical mile limit may not be shown for every island due to scale but still applies to any land above highest water mark.

Map S8sw-6-5

Horizontal datum: GDA94
 Projection: UTM (Zone 56)
 Prepared 23 January 2023
 Maritime Safety Queensland
 Spatial Services

MARITIME SAFETY QUEENSLAND
 Smooth and partially smooth waters
 and
 EPIRB limits
PORT AMLA and KEPPEL BAY

© The State of Queensland
 Transport and Main Roads 2023

