

Maritime Safety Queensland



Round Hill Creek

Beacon to Beacon Guide

Discovery Coast

Published by

Maritime Safety Queensland

© Copyright The State of Queensland
(Department of Transport and Main Roads) 2022



To view a copy of this licence, visit
<https://creativecommons.org/licenses/by/4.0/>

For commercial use terms and conditions

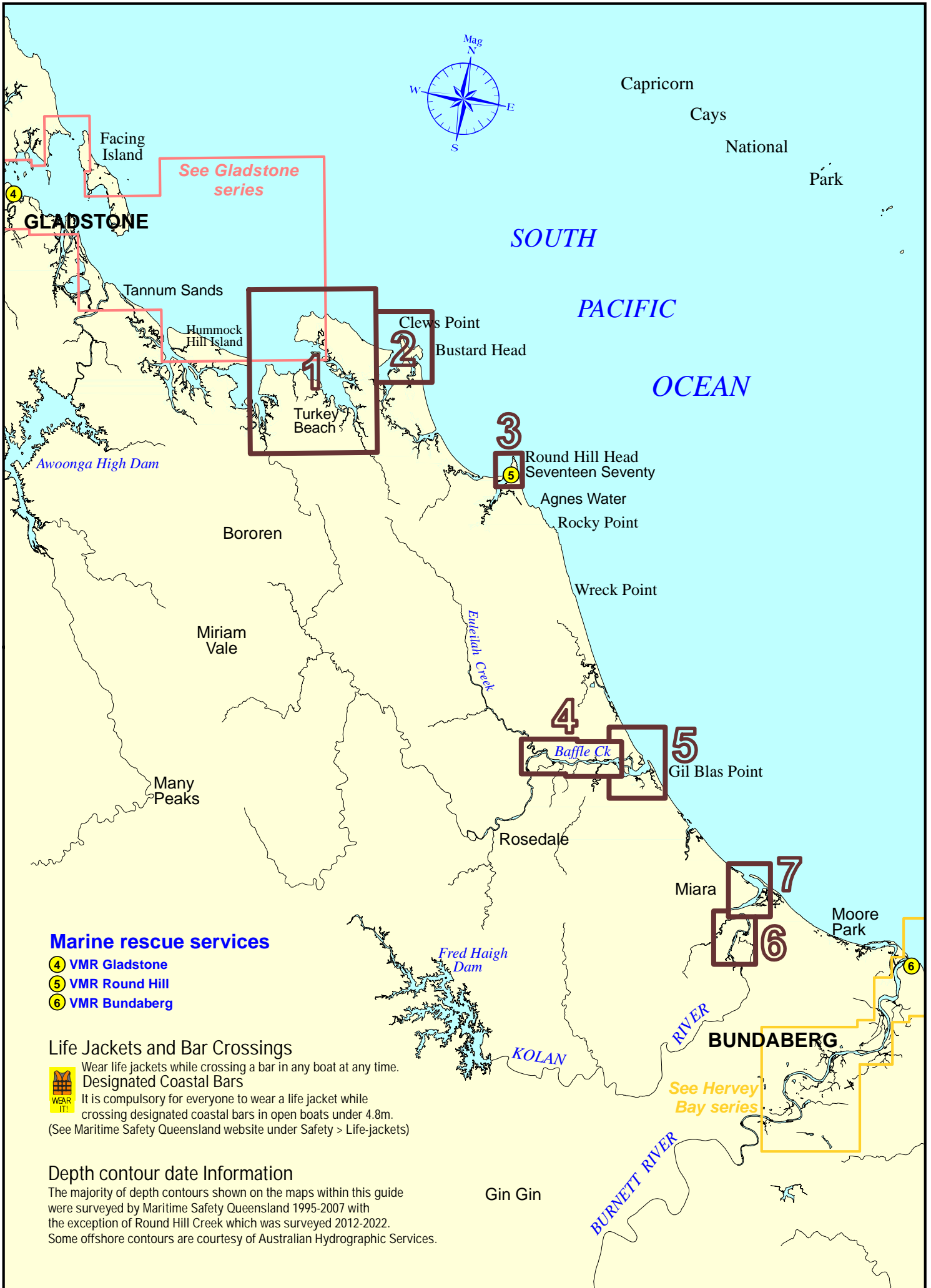
Please visit the Maritime Safety Queensland website at www.msq.qld.gov.au

'How to' use this guide

Use this Beacon to Beacon Guide with the 'How to' and legend booklet available from www.msq.qld.gov.au



Queensland
Government



Marine rescue services

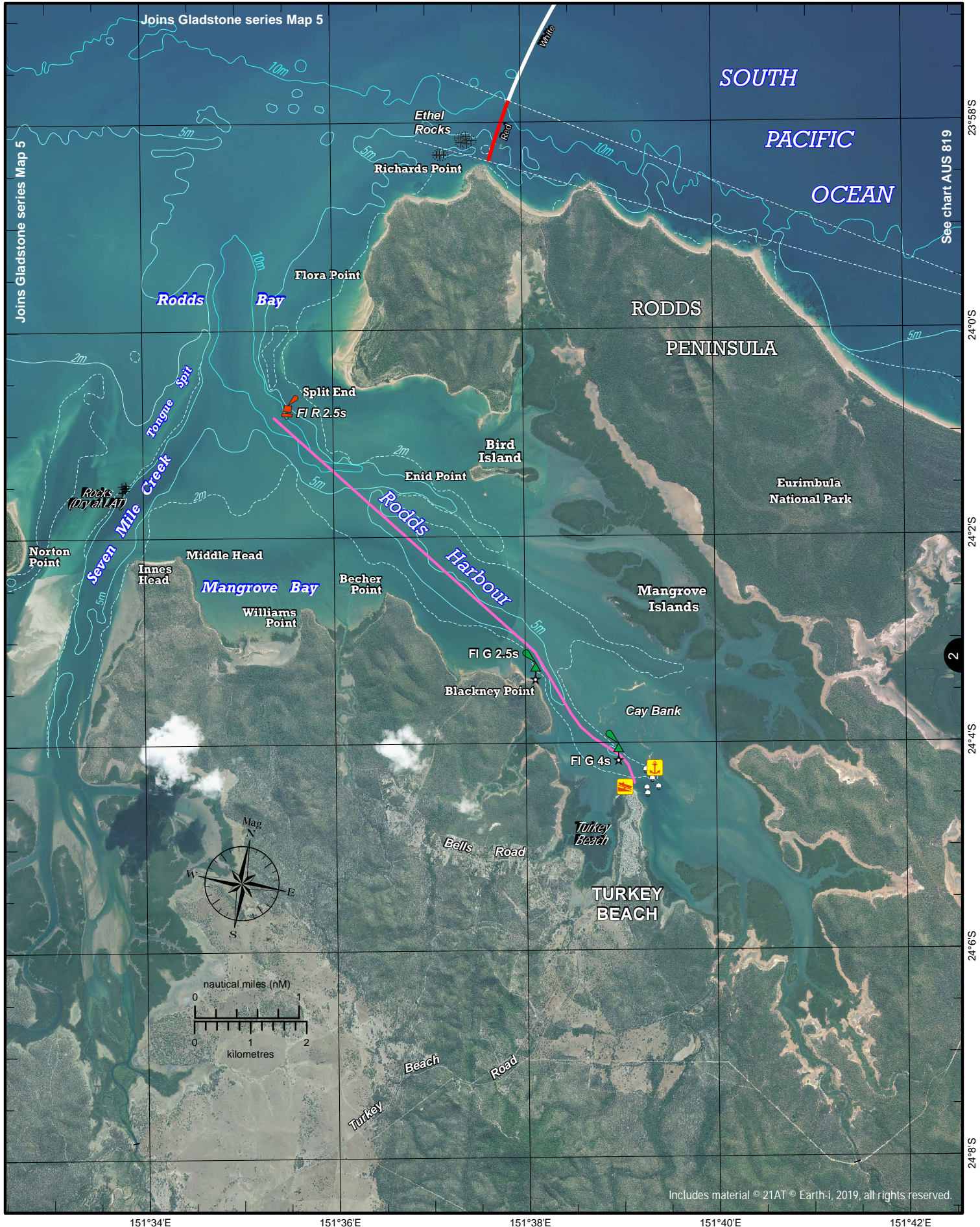
- ④ VMR Gladstone
- ⑤ VMR Round Hill
- ⑥ VMR Bundaberg

Life Jackets and Bar Crossings

Wear life jackets while crossing a bar in any boat at any time.
Designated Coastal Bars
 It is compulsory for everyone to wear a life jacket while crossing designated coastal bars in open boats under 4.8m.
 (See Maritime Safety Queensland website under Safety > Life-jackets)


Depth contour date Information


The majority of depth contours shown on the maps within this guide were surveyed by Maritime Safety Queensland 1995-2007 with the exception of Round Hill Creek which was surveyed 2012-2022. Some offshore contours are courtesy of Australian Hydrographic Services.

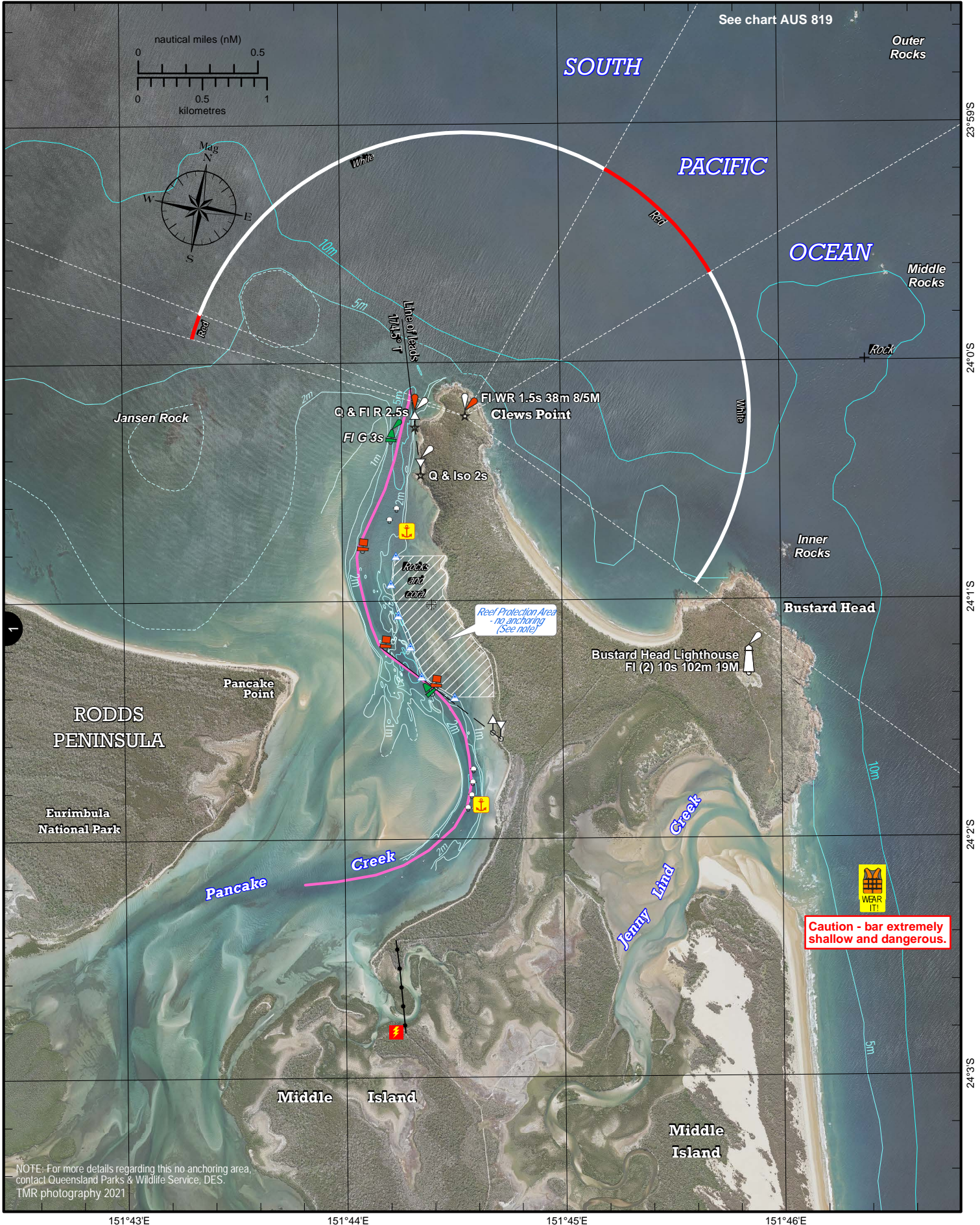


Always keep a proper lookout when boating. Exercise care at all times.
 Look up and live for power and cable crossings that may not be shown on these maps due to scale or recent construction.
CAUTION: Limited or no depth contour data is available for these waters. (Refer to the Key Sheet for this guide to determine date of survey information).
 The latest satellite imagery (captured during 2018) is shown only as a guide. Sandbank visibility depends on the height of tide at time of image capture.
 Exercise care when travelling outside suggested navigation tracks.
 © Copyright The State of Queensland 2022
 Queensland Department of Transport and Main Roads - Maritime Safety Queensland.
 To reproduce any map within this series, see terms and conditions at Maritime Safety Queensland's website (www.msq.qld.gov.au)

Nautical information current to 10 November 2022







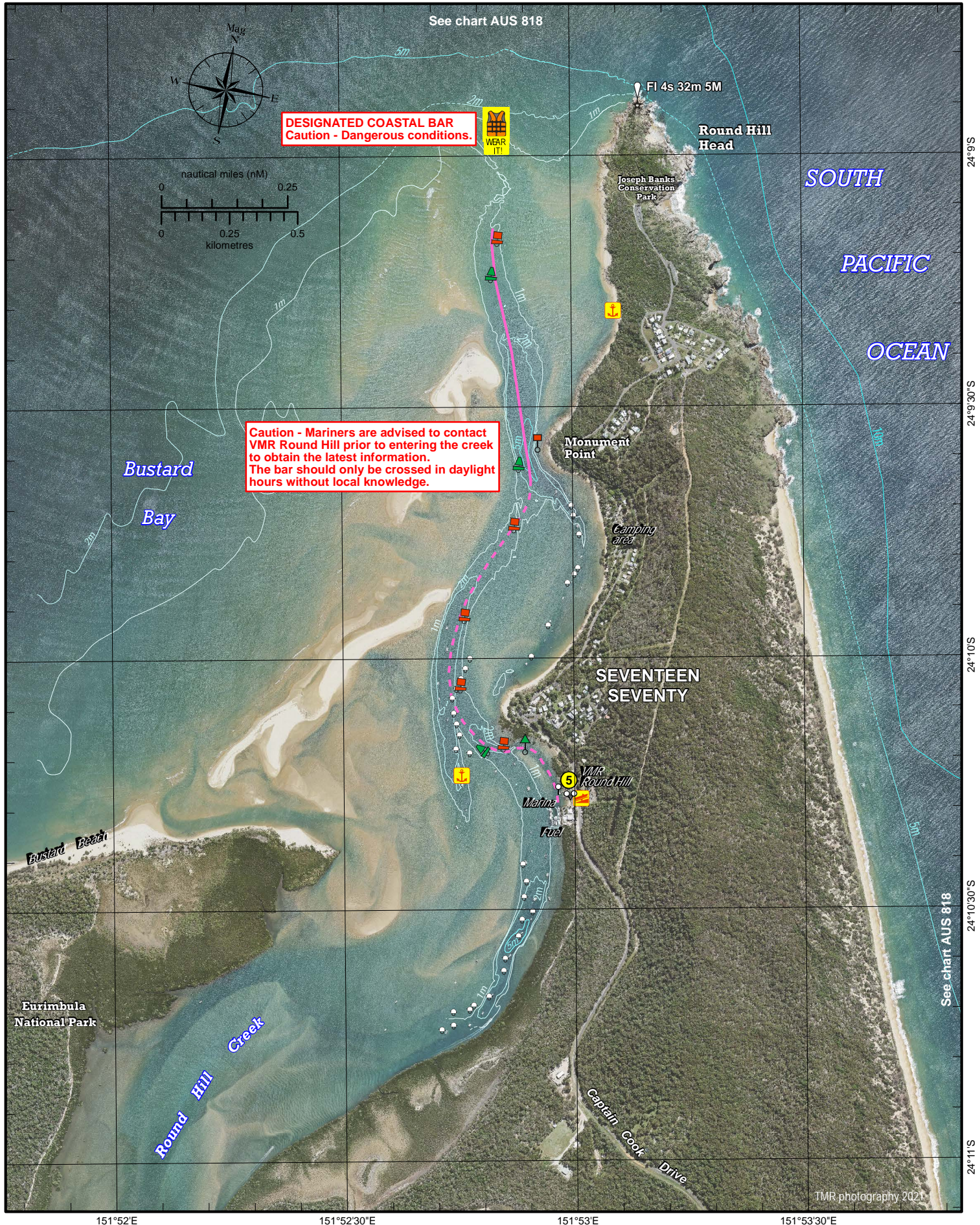
NOTE: For more details regarding this no anchoring area, contact Queensland Parks & Wildlife Service, DES. TMR photography 2021

Always keep a proper lookout when boating. Exercise care at all times.
 Look up and live for power and cable crossings that may not be shown on these maps due to scale or recent construction.
CAUTION: Limited or no depth contour data is available for these waters. (Refer to the Key Sheet for this guide to determine date of survey information).
 The latest air photo imagery (captured during 2021) is shown only as a guide. Sandbank visibility depends on the height of tide at time of image capture.
 Exercise care when travelling outside suggested navigation tracks.

Nautical information current to 10 November 2022


© Copyright The State of Queensland 2022
 Queensland Department of Transport and Main Roads - Maritime Safety Queensland.
 To reproduce any map within this series, see terms and conditions at Maritime Safety Queensland's website (www.msq.qld.gov.au)




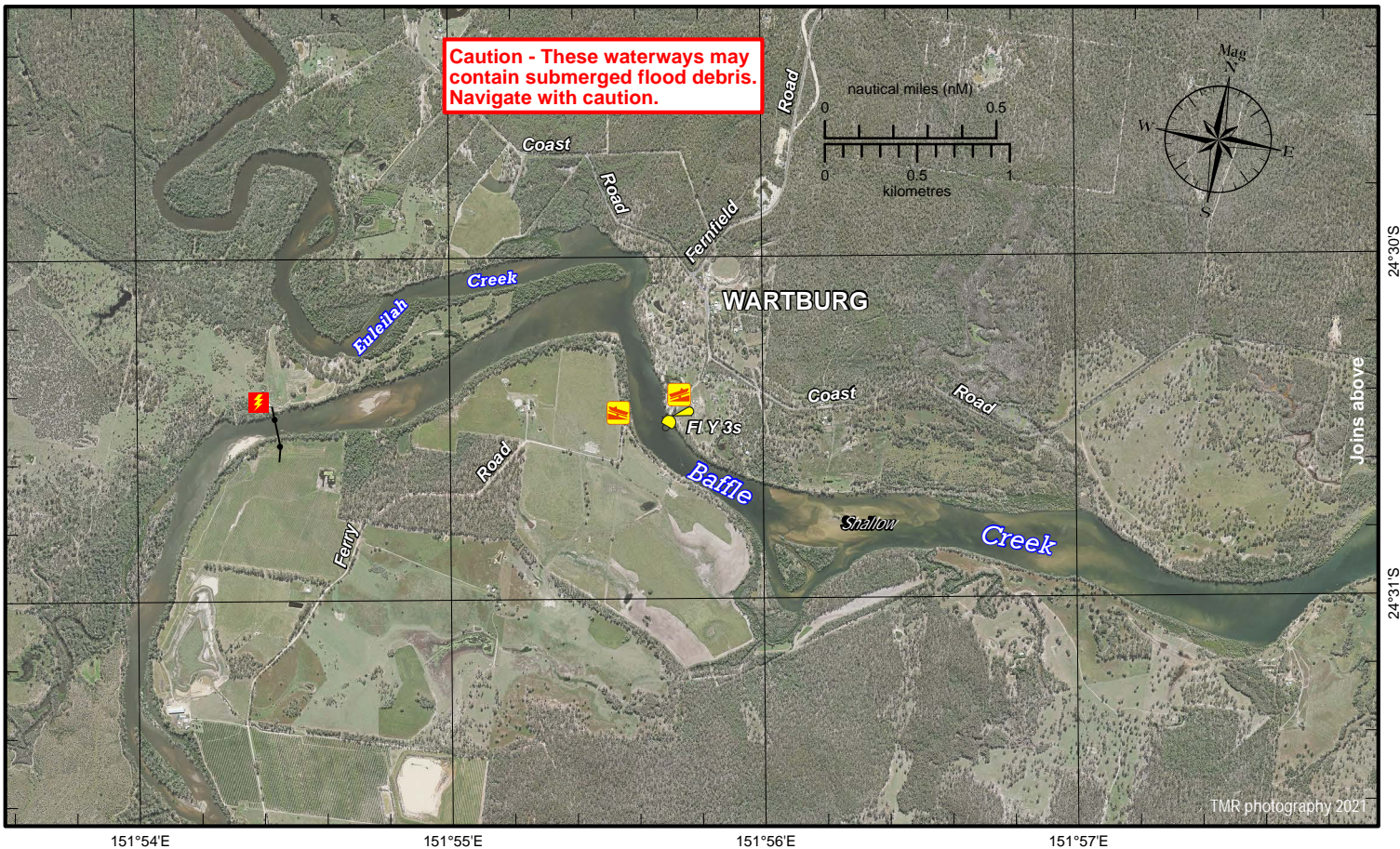
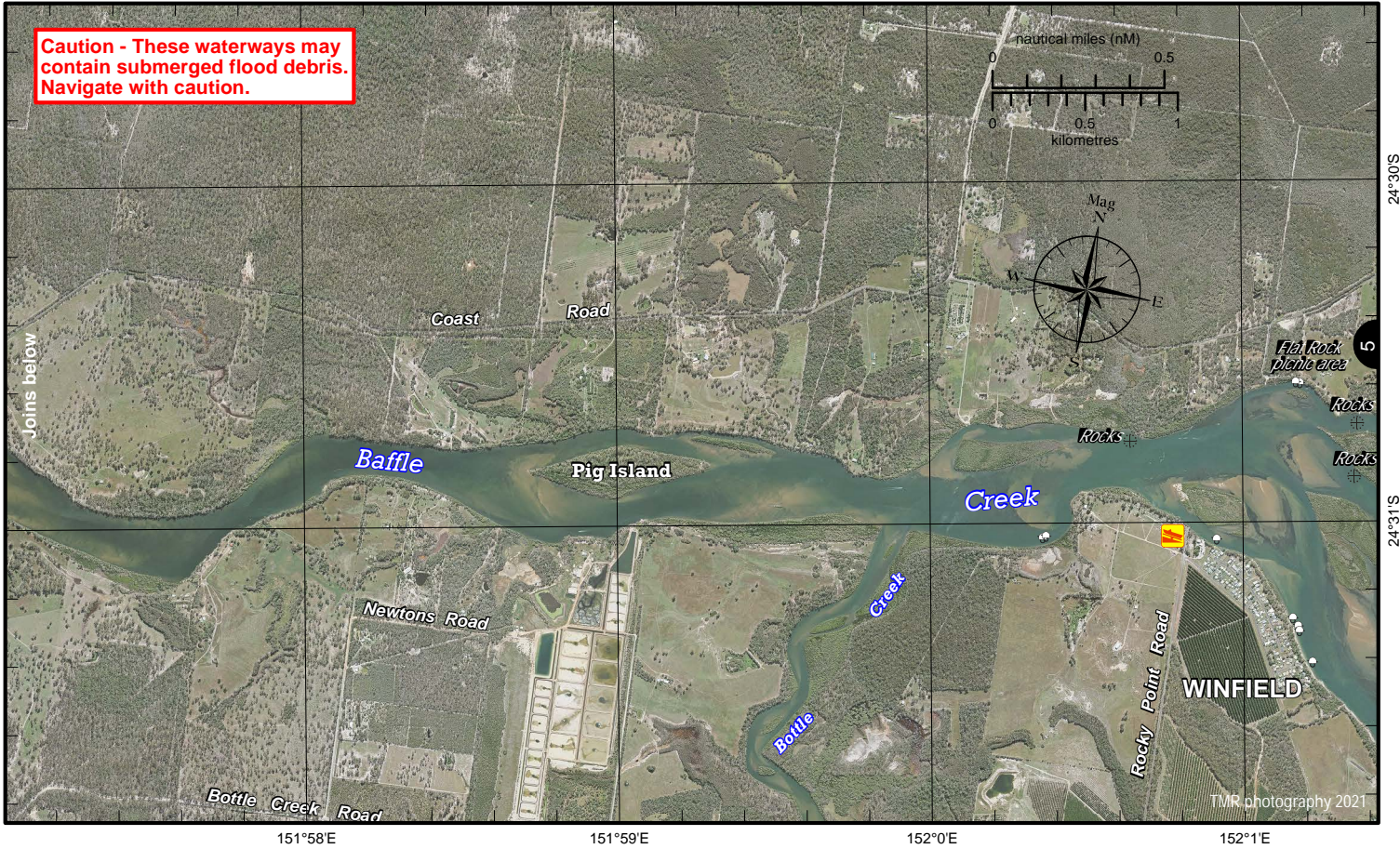


Always keep a proper lookout when boating. Exercise care at all times.
 Look up and live for power and cable crossings that may not be shown on these maps due to scale or recent construction.
CAUTION: Limited or no depth contour data is available for these waters. (Refer to the Key Sheet for this guide to determine date of survey information).
 The latest air photo imagery (captured during 2021) is shown only as a guide. Sandbank visibility depends on the height of tide at time of image capture.
 Exercise care when travelling outside suggested navigation tracks.
 © Copyright The State of Queensland 2022
 Queensland Department of Transport and Main Roads - Maritime Safety Queensland.
 To reproduce any map within this series, see terms and conditions at Maritime Safety Queensland's website (www.msq.qld.gov.au)

Nautical information current to 10 November 2022





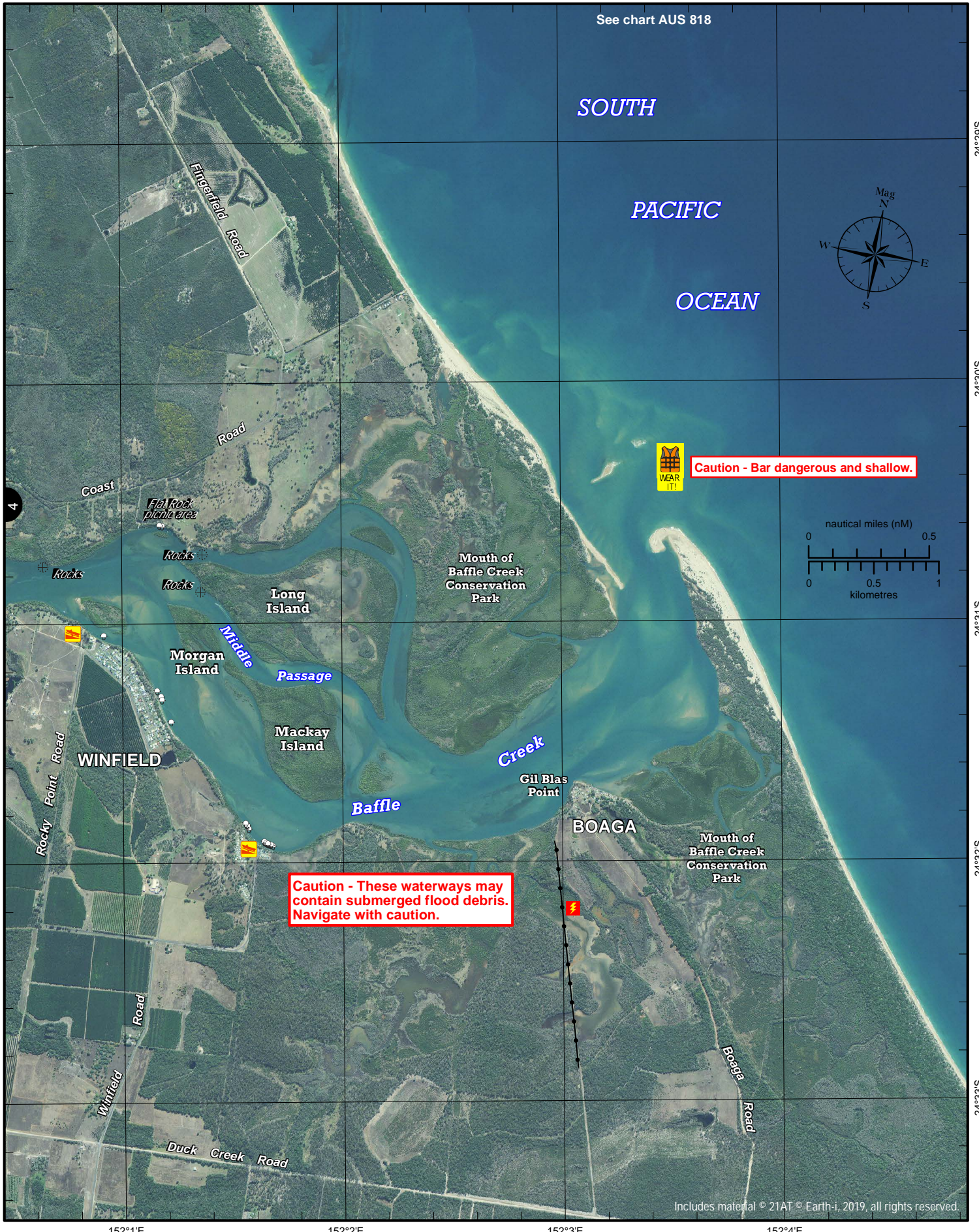


Always keep a proper lookout when boating. Exercise care at all times.
 Look up and live for power and cable crossings that may not be shown on these maps due to scale or recent construction.
CAUTION: Limited or no depth contour data is available for these waters. (Refer to the Key Sheet for this guide to determine date of survey information).
 The latest air photo imagery (captured during 2021) is shown only as a guide. Sandbank visibility depends on the height of tide at time of image capture.
 Exercise care when travelling outside suggested navigation tracks.

Nautical information current to 10 November 2022

© Copyright The State of Queensland 2022
 Queensland Department of Transport and Main Roads - Maritime Safety Queensland.
 To reproduce any map within this series, see terms and conditions at Maritime Safety Queensland's website (www.msq.qld.gov.au)



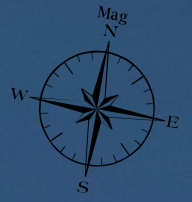


See chart AUS 818

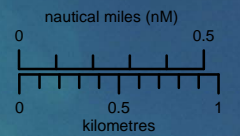
SOUTH

PACIFIC

OCEAN



Caution - Bar dangerous and shallow.



Caution - These waterways may contain submerged flood debris. Navigate with caution.

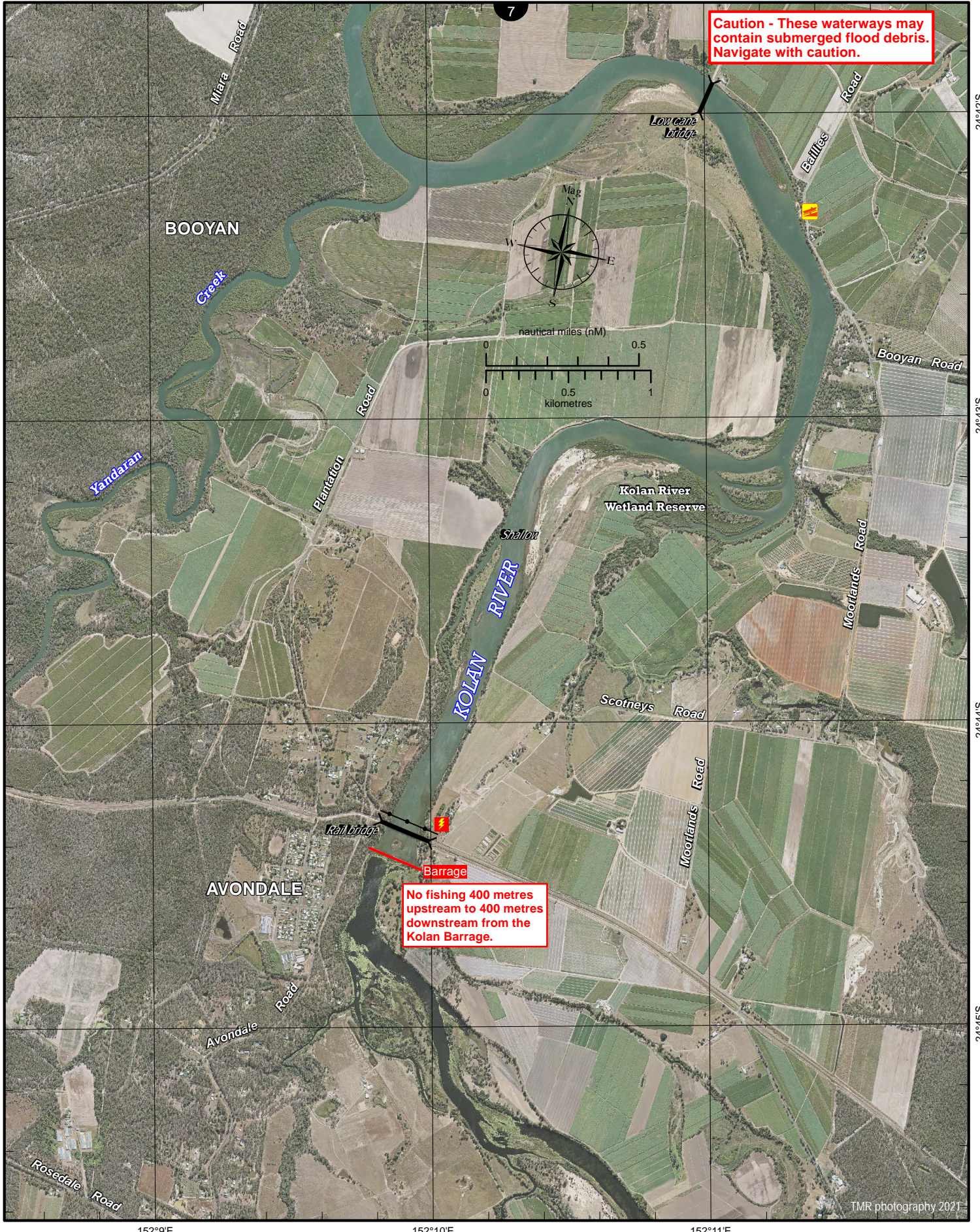


Includes material © 21AT © Earth-i, 2019, all rights reserved.

Always keep a proper lookout when boating. Exercise care at all times.
 Look up and live for power and cable crossings that may not be shown on these maps due to scale or recent construction.
CAUTION: Limited or no depth contour data is available for these waters. (Refer to the Key Sheet for this guide to determine date of survey information).
 The latest satellite imagery (captured during 2018) is shown only as a guide. Sandbank visibility depends on the height of tide at time of image capture.
 Exercise care when travelling outside suggested navigation tracks.
 © Copyright The State of Queensland 2022
 Queensland Department of Transport and Main Roads - Maritime Safety Queensland.
 To reproduce any map within this series, see terms and conditions at Maritime Safety Queensland's website (www.msq.qld.gov.au)

Nautical information current to 10 November 2022



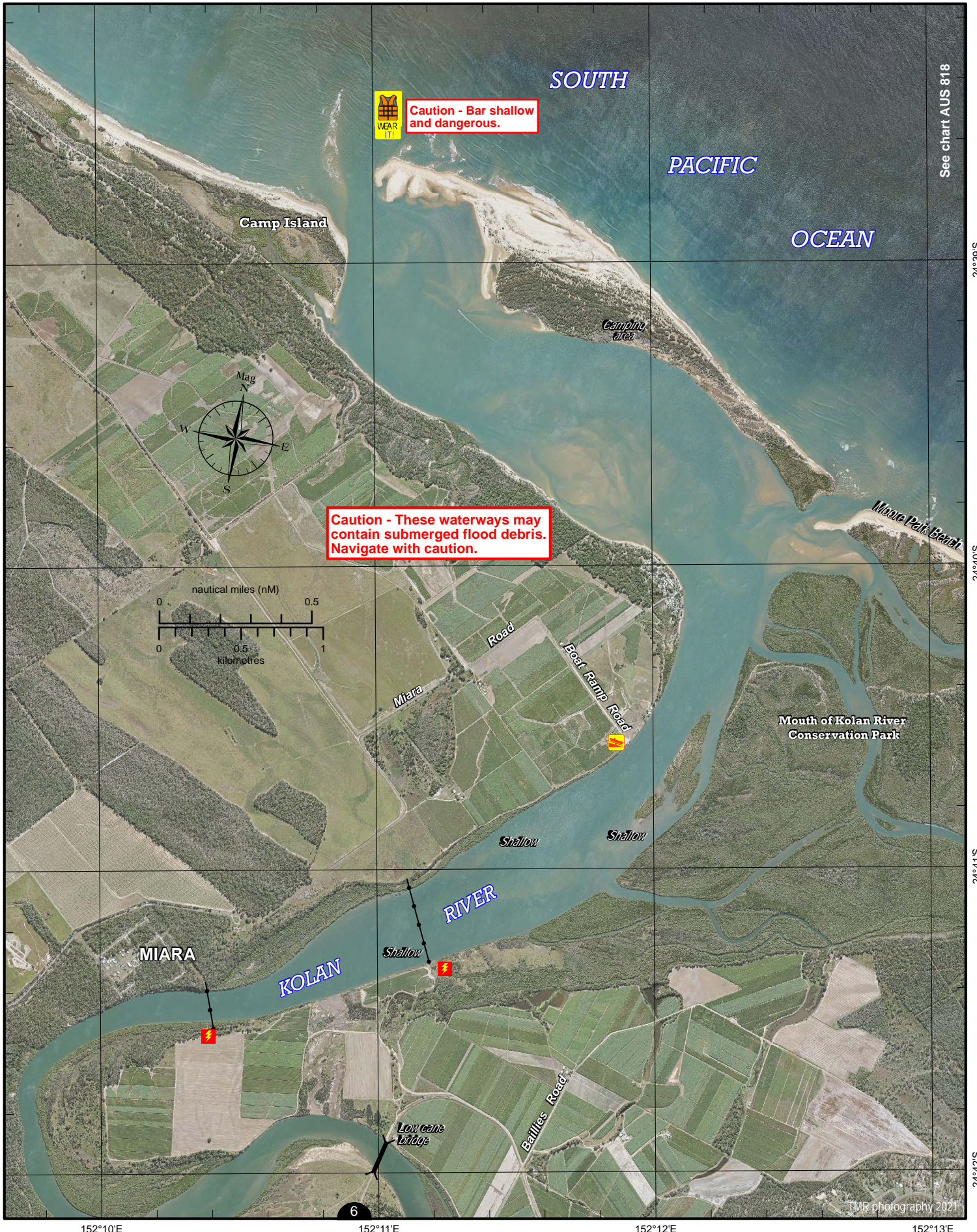


Always keep a proper lookout when boating. Exercise care at all times.
 Look up and live for power and cable crossings that may not be shown on these maps due to scale or recent construction.
CAUTION: Limited or no depth contour data is available for these waters. (Refer to the Key Sheet for this guide to determine date of survey information).
 The latest air photo imagery (captured during 2021) is shown only as a guide. Sandbank visibility depends on the height of tide at time of image capture.
 Exercise care when travelling outside suggested navigation tracks.
 © Copyright The State of Queensland 2022
 Queensland Department of Transport and Main Roads - Maritime Safety Queensland.
 To reproduce any map within this series, see terms and conditions at Maritime Safety Queensland's website (www.msq.qld.gov.au)

Nautical information current to 10 November 2022

CC BY

Queensland Government



See chart AUS 818

24°39'S

24°40'S

24°41'S

24°42'S

152°10'E

152°11'E

152°12'E

152°13'E

Always keep a proper lookout when boating. Exercise care at all times.
 Look up and live for power and cable crossings that may not be shown on these maps due to scale or recent construction.
CAUTION: Limited or no depth contour data is available for these waters. (Refer to the Key Sheet for this guide to determine date of survey information).
 The latest air photo imagery (captured during 2021) is shown only as a guide. Sandbank visibility depends on the height of tide at time of image capture.
 Exercise care when travelling outside suggested navigation tracks.

Nautical information current to 10 November 2022

© Copyright The State of Queensland 2022
 Queensland Department of Transport and Main Roads - Maritime Safety Queensland.
 To reproduce any map within this series, see terms and conditions at Maritime Safety Queensland's website (www.msq.qld.gov.au)

