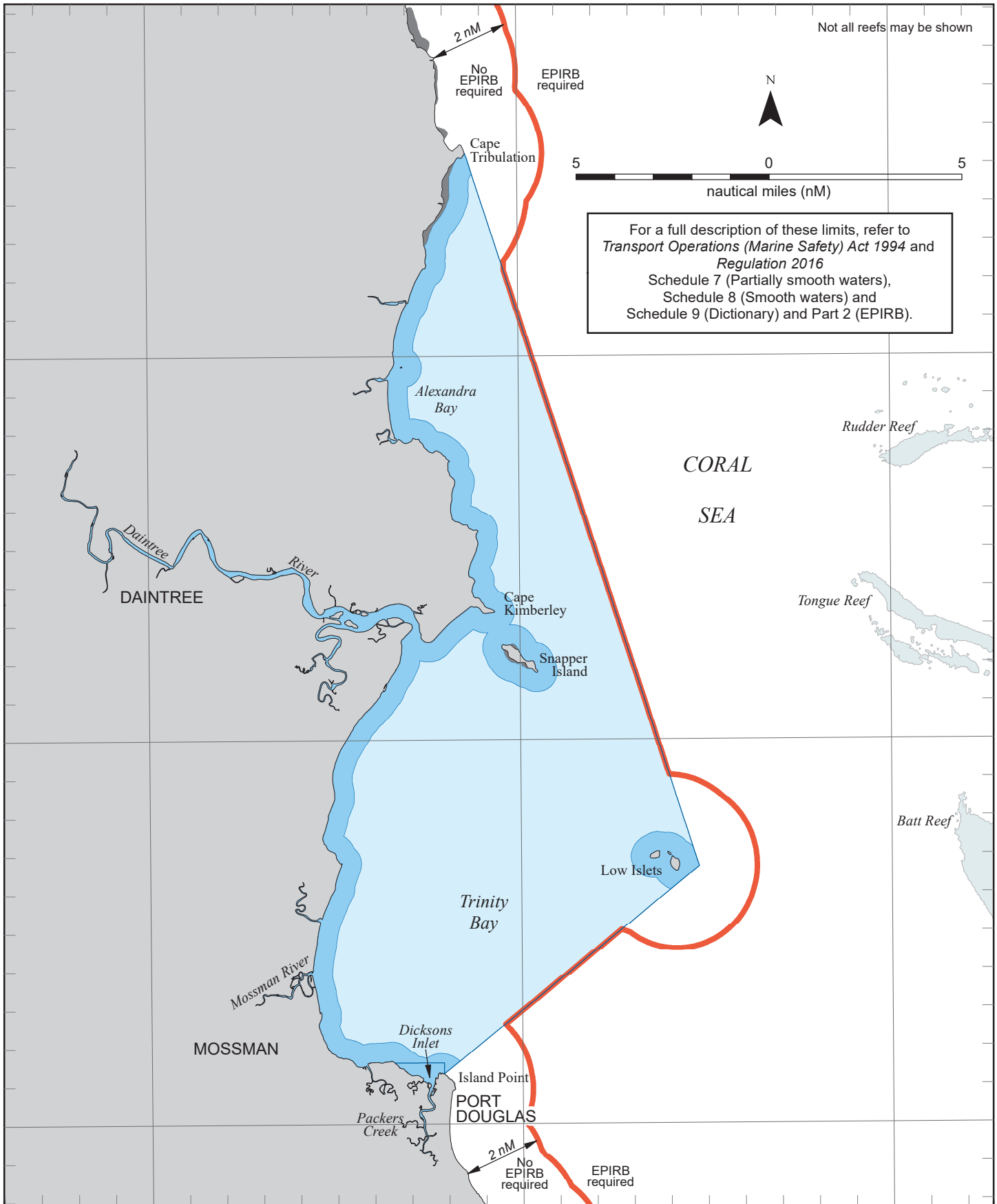


145°20'E

145°30'E

145°40'E

Not all reefs may be shown



For a full description of these limits, refer to *Transport Operations (Marine Safety) Act 1994 and Regulation 2016*
 Schedule 7 (Partially smooth waters),
 Schedule 8 (Smooth waters) and
 Schedule 9 (Dictionary) and Part 2 (EPIRB).

"Smooth waters" (as described in Schedule 9) means the waters-
 • of rivers, creeks, streams and lakes; or
 • within breakwaters or revetments; or
 • described in Schedule 7 that are within 0.5 nautical mile from land; or
 • described in Schedule 8.
"Partially smooth waters" means the waters-
 • described in Schedule 7, other than waters within 0.5 nautical mile from land.

- Partially smooth waters
- Smooth waters
- The EPIRB 2 nautical mile limit may not be shown for every island due to scale but still applies to any land above highest water mark.

Map S8sw-15-5

Horizontal datum: GDA94
 Projection: UTM (Zone 55)
 Prepared 23 January 2023
Maritime Safety Queensland
 Spatial Services

MARITIME SAFETY QUEENSLAND
 Smooth and partially smooth waters
 and
 EPIRB limits
PORT DOUGLAS

© The State of Queensland
 Transport and Main Roads 2023



Queensland
 Government