

146°20'E






146°25'E

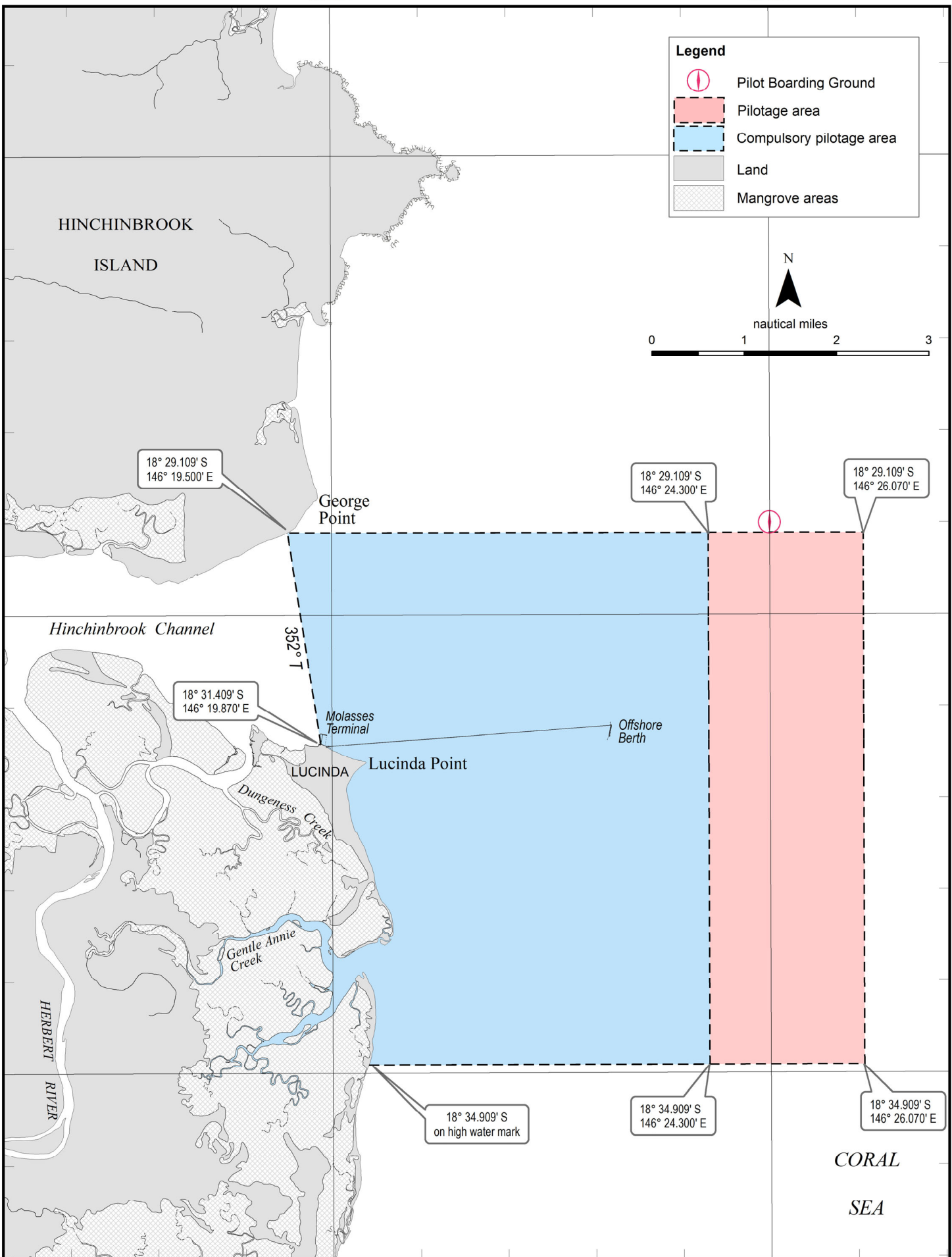
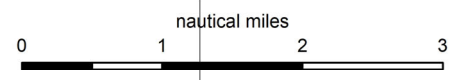
18°25'S

18°30'S

18°35'S

Legend

-  Pilot Boarding Ground
-  Pilotage area
-  Compulsory pilotage area
-  Land
-  Mangrove areas



Map: S3t-23
 Horizontal datum: GDA2020
 Projection: UTM (zone 55)
 Prepared 4 January 2022
 Maritime Safety Queensland
 Spatial Services

PORT PROCEDURES MANUAL
PORT OF LUCINDA
Pilotage and Compulsory Pilotage Areas

As defined in *Transport Operations (Marine Safety) Regulation 2016*. Current as at 22 October 2021

© The State of Queensland 2022
 (Transport and Main Roads)

GDA 2020



 **Queensland Government**