

This map is a guide only and should not be used for navigation purposes. Refer to the *Transport Operations (Marine Pollution) Act 1995* and *Regulation 2018* for complete ship-sourced sewage requirements.

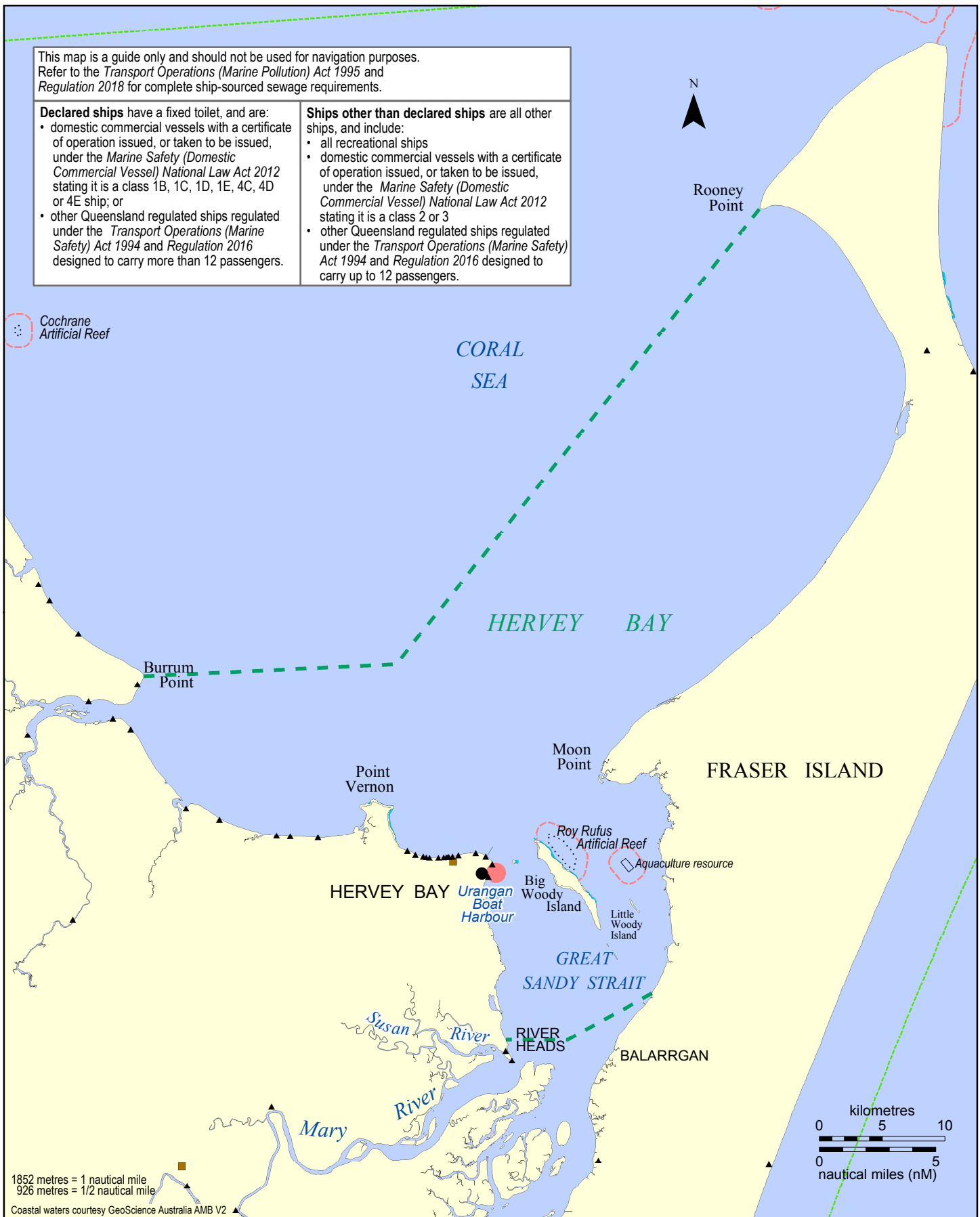
Declared ships have a fixed toilet, and are:

- domestic commercial vessels with a certificate of operation issued, or taken to be issued, under the *Marine Safety (Domestic Commercial Vessel) National Law Act 2012* stating it is a class 1B, 1C, 1D, 1E, 4C, 4D or 4E ship; or
- other Queensland regulated ships regulated under the *Transport Operations (Marine Safety) Act 1994* and *Regulation 2016* designed to carry more than 12 passengers.

Ships other than declared ships are all other ships, and include:

- all recreational ships
- domestic commercial vessels with a certificate of operation issued, or taken to be issued, under the *Marine Safety (Domestic Commercial Vessel) National Law Act 2012* stating it is a class 2 or 3
- other Queensland regulated ships regulated under the *Transport Operations (Marine Safety) Act 1994* and *Regulation 2016* designed to carry up to 12 passengers.

Cochrane Artificial Reef



1852 metres = 1 nautical mile
926 metres = 1/2 nautical mile
Coastal waters courtesy GeoScience Australia AMB V2

LEGEND

- Discharge prohibited
- 926 metre line
- Hervey Bay Waters
- Coastal waters (3nM limit)
- Pump-out station
- Toilet
- Caravan dump station

Discharge permitted with the following restrictions:

- Grade A treated sewage - Discharge permitted (i.e.no further restrictions)
- Grade B treated sewage - No discharge within 700m of a person in the water, aquaculture fisheries resource (e.g. oyster lease) or a reef
- Grade C treated sewage - No discharge within 926m of a person in the water, aquaculture fisheries resource (e.g.oyster lease) or a reef

MAP S31-39-3

Version 5 - effective 1 September 2018
Copyright: The State of Queensland 2018
Prepared 28 August 2018
Maritime Safety Queensland - Spatial Services

Treated sewage discharge restrictions for ships other than declared ships under the *Transport Operations (Marine Pollution) Act 1995* and *Regulation 2018*

GREAT SANDY STRAIT NORTH

Treated sewage - ships other than declared ships

To view a copy of the licence, visit <http://creativecommons.org/licenses/by/4.0/>



SHIP-SOURCED SEWAGE – DISCHARGE REQUIREMENTS FOR THE HERVEY BAY AREA MAP SERIES (ONLY)

**Sewage discharge requirements for Ships other than Declared Ships under the
*Transport Operations (Marine Pollution) Act 1995 and Regulation 2018***

	1st September 2018
All ships with a fixed toilet	For all ships with a fixed toilet sewage must first pass through a macerator which can't be bypassed before being discharged into the marine environment, unless the fixed toilet is a composting toilet.
Untreated sewage discharge requirements	<p>Prohibited Discharge Waters Illegal to discharge in coastal waters that are:</p> <ul style="list-style-type: none"> - a boat harbour - a canal - a marina - the marine national park zone, under the <i>Marine Parks (Great Sandy) Zoning Plan 2006</i>, located near Burkitt's Reef, Hoffman's Rocks or Barolin Rock, adjacent to the Woongarra Coast; - an area within the Great Barrier Reef Coast Marine Park prescribed under Schedule 6 of the Regulation
	<p>Smooth Waters (Includes rivers, creeks and designated smooth waters) * Illegal to discharge</p> <p>Hervey Bay waters *1-15 persons on board - Illegal to discharge within 1 nautical mile (1852 metres) of a person in the water, or an aquaculture fisheries resources, a reef, or the mean low water mark of an island or the mainland *16 or more persons on board - Illegal to discharge</p> <p>Open Waters * Illegal to discharge within ½ nautical mile (926m) of a wharf or jetty, other than a jetty that is a marina * Illegal to discharge within 1 nautical mile (1852 metres) of a person in the water, or aquaculture fisheries resources * 7 to 15 persons - Illegal to discharge within 1 nautical mile of a reef, the low water mark of an island or the mainland * 16 or more persons - Illegal to discharge in open waters (3 nautical mile of the territorial sea baseline)</p>
Treated sewage discharge requirements	<p>Prohibited Discharge Waters Illegal to discharge in coastal waters that are:</p> <ul style="list-style-type: none"> - a boat harbour - a canal - a marina - the marine national park zone, under the <i>Marine Parks (Great Sandy) Zoning Plan 2006</i>, located near Burkitt's Reef, Hoffman's Rocks or Barolin Rock, adjacent to the Woongarra Coast; - an area within the Great Barrier Reef Coast Marine Park prescribed under Schedule 6 of the Regulation <p>Hervey Bay waters, Smooth Waters and Open Waters Illegal to discharge Grade C Treated Sewage within ½ nautical mile (926 metres) of</p> <ul style="list-style-type: none"> - a person in the water - aquaculture fisheries resources - reef <p>Illegal to discharge Grade B Treated Sewage within 700 m of:</p> <ul style="list-style-type: none"> - a person in the water - aquaculture resources - a reef <p>Illegal to discharge Grade A Treated Sewage in prohibited discharge waters</p> <ul style="list-style-type: none"> - No other restrictions
On-Board Documents	All vessels with a sewage treatment sytem are required to have the following on-board and available for inspection:
	<ul style="list-style-type: none"> - Sewage treatment system manufacturer's details - Sewage treatment system documentation - Sewage treatment system service manual - Sewage treatment system service records including maintenance and assessment documentation