

# Maritime Safety Queensland



Town Reach, Brisbane River

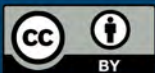
# Beacon to Beacon Guide

## Brisbane River and Bremer River

### Published by

Maritime Safety Queensland

© Copyright The State of Queensland  
(Department of Transport and Main Roads) 2018



To view a copy of this licence, visit  
<https://creativecommons.org/licenses/by/4.0/>

### For commercial use terms and conditions

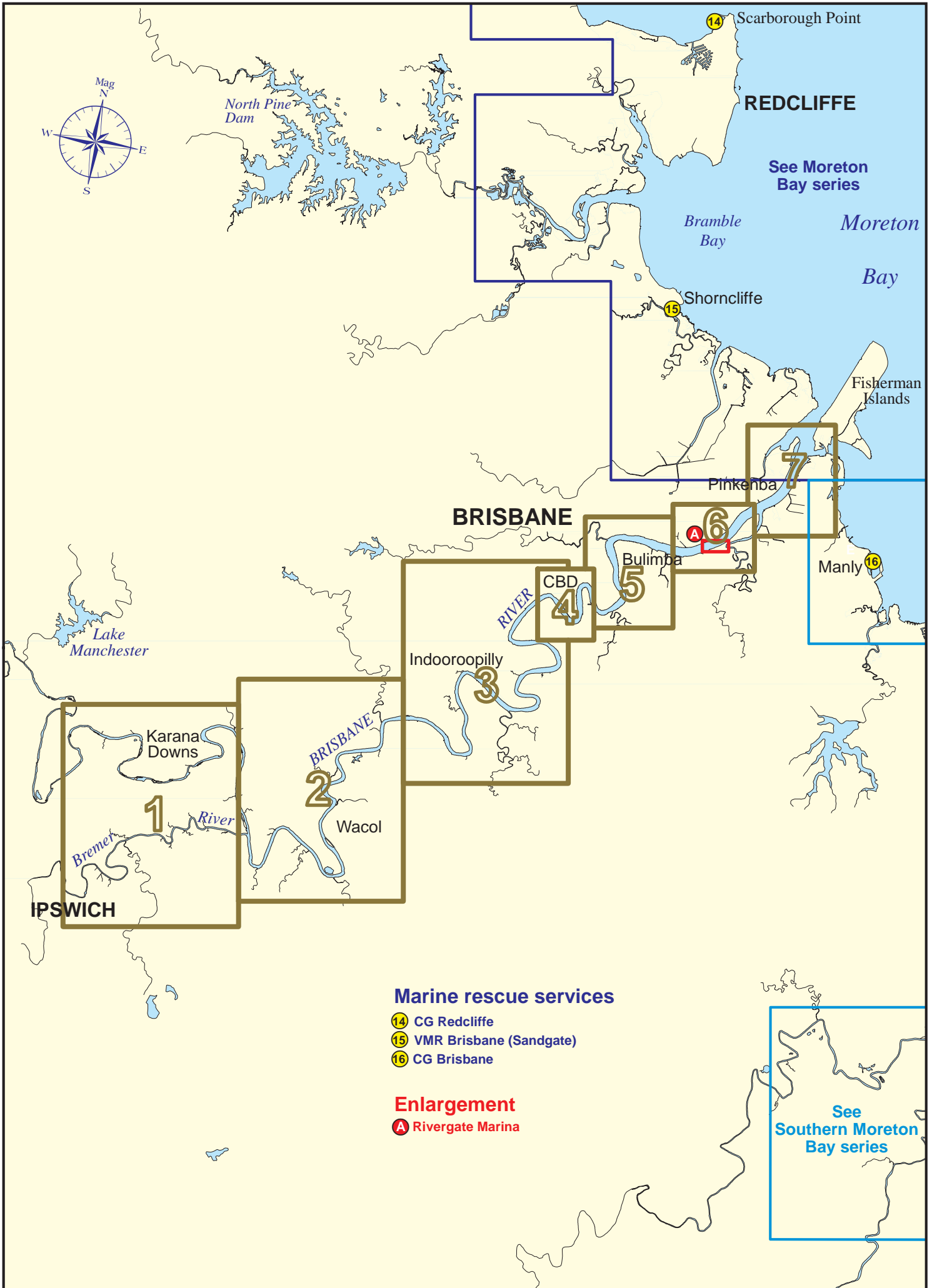
Please visit the Maritime Safety Queensland website at [www.msq.qld.gov.au](http://www.msq.qld.gov.au)

### 'How to' use this guide

Use this Beacon to Beacon Guide with the 'How to' and legend booklet available from [www.msq.qld.gov.au](http://www.msq.qld.gov.au)

# Brisbane River and Bremer River

# Key Sheet



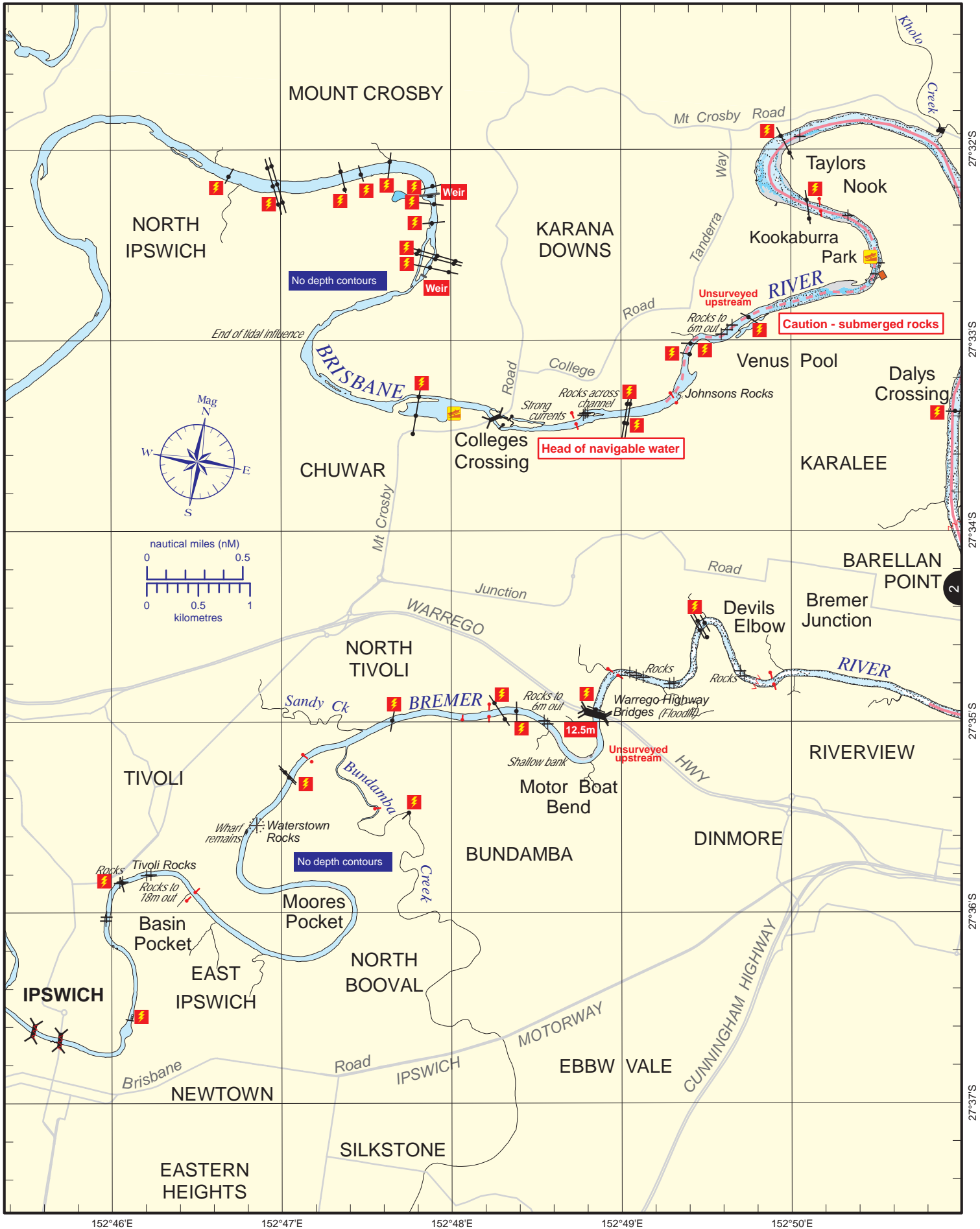
### Marine rescue services

- 14 CG Redcliffe
- 15 VMR Brisbane (Sandgate)
- 16 CG Brisbane

### Enlargement

- A Rivergate Marina

See Southern Moreton Bay series



Always keep a proper lookout when boating.

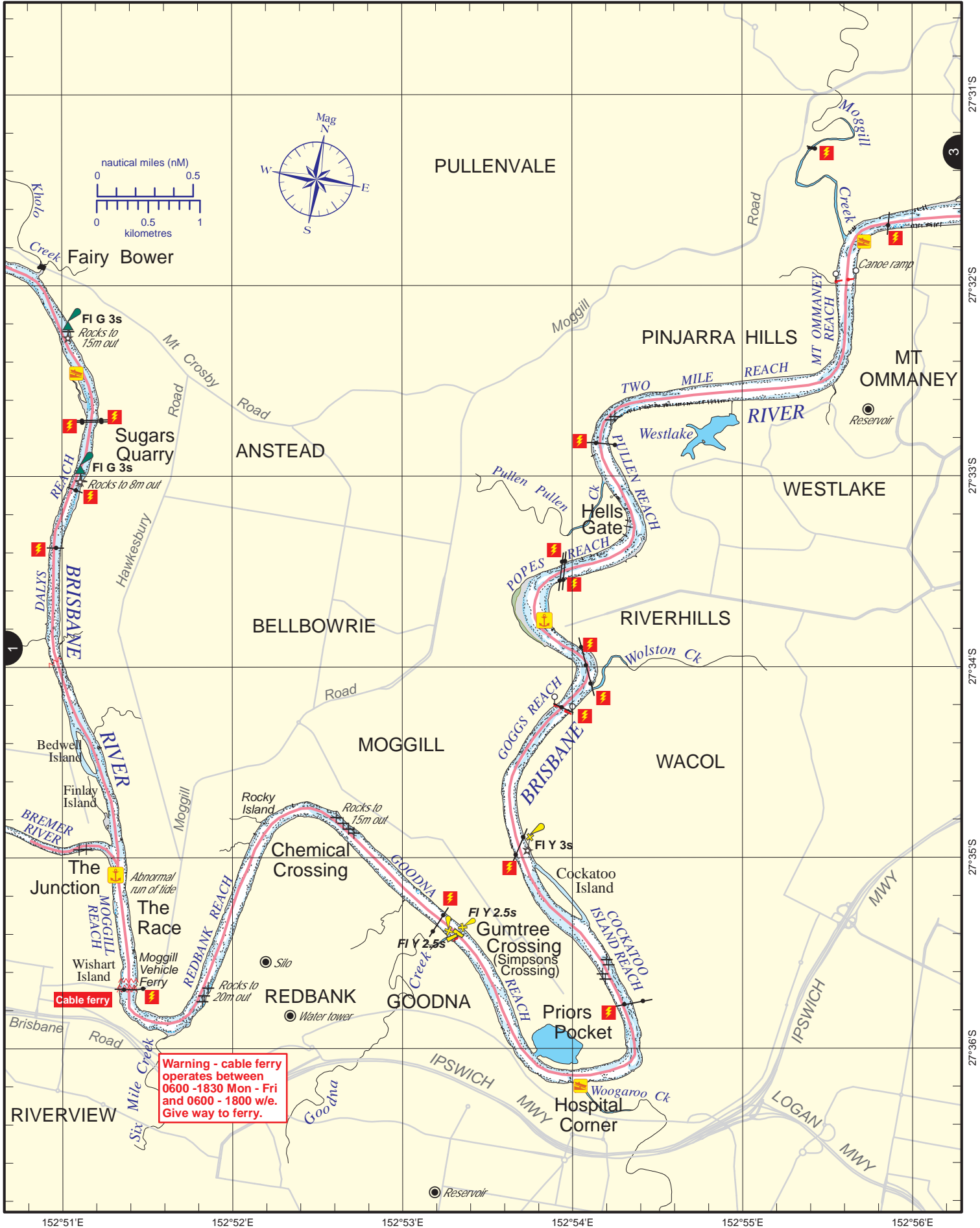
Nautical information current to 19 November 2018

**Look up and live** for power and cable crossings that may not be shown on these maps due to scale or recent construction.

**CAUTION: depth contours have not been re-surveyed in most areas since the 2011 and 2013 floods.**

**Exercise care when travelling outside suggested navigation tracks.**





**Warning - cable ferry operates between 0600 - 1830 Mon - Fri and 0600 - 1800 w/e. Give way to ferry.**

Always keep a proper lookout when boating. Nautical information current to 19 November 2018

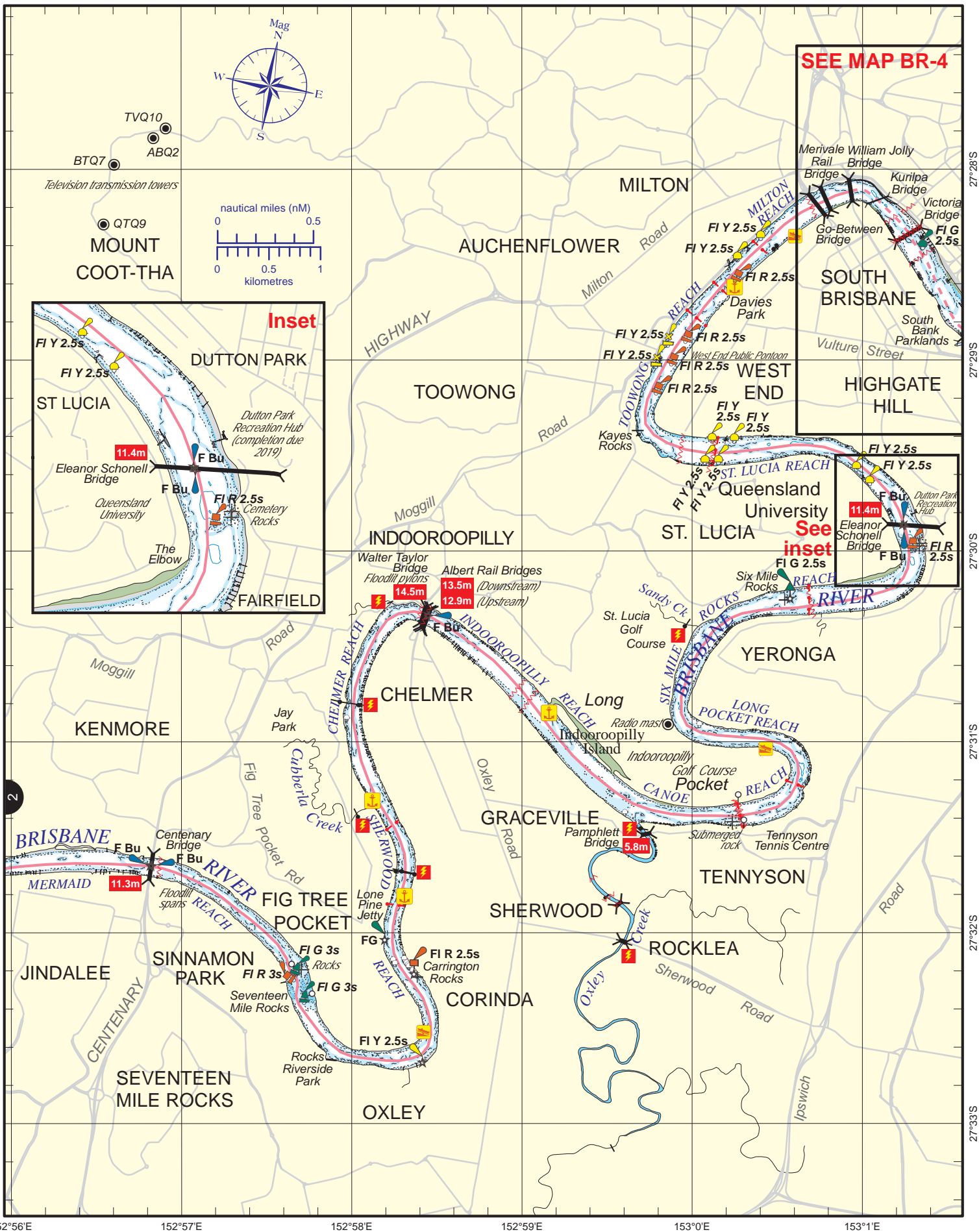
**Look up and live** for power and cable crossings that may not be shown on these maps due to scale or recent construction.

**CAUTION: depth contours have not been re-surveyed in most areas since the 2011 and 2013 floods.**

**Exercise care when travelling outside suggested navigation tracks.**

© Copyright The State of Queensland 2018  
 Queensland Department of Transport and Main Roads - Maritime Safety Queensland.  
 To reproduce any map within this series, see terms and conditions at Maritime Safety Queensland's website ([www.msq.qld.gov.au](http://www.msq.qld.gov.au))





SEE MAP BR-4

See inset

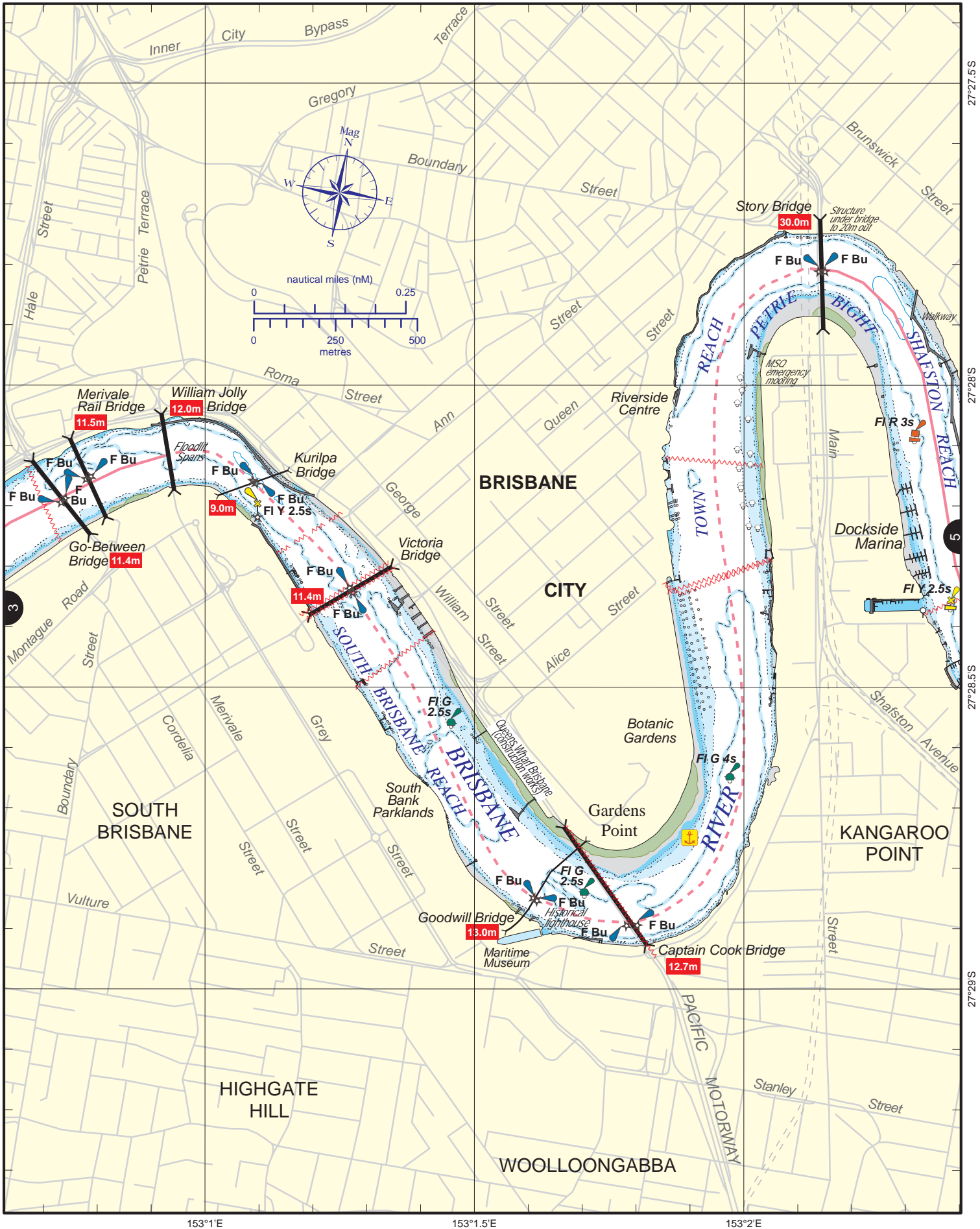
Always keep a proper lookout when boating.  
**Look up and live** for power and cable crossings that may not be shown on these maps due to scale or recent construction.  
**CAUTION: depth contours have not been re-surveyed in most areas since the 2011 and 2013 floods.**  
**Exercise care when travelling outside suggested navigation tracks.**

© Copyright The State of Queensland 2019  
 Queensland Department of Transport and Main Roads - Maritime Safety Queensland.  
 To reproduce any map within this series, see terms and conditions at Maritime Safety Queensland's website ([www.msq.qld.gov.au](http://www.msq.qld.gov.au))

Nautical information current to 8 April 2019

CC BY

Queensland Government



Always keep a proper lookout when boating.

Nautical information current to 19 November 2018

**Look up and live** for power and cable crossings that may not be shown on these maps due to scale or recent construction.

**CAUTION: depth contours have not been re-surveyed in most areas since the 2011 and 2013 floods.**

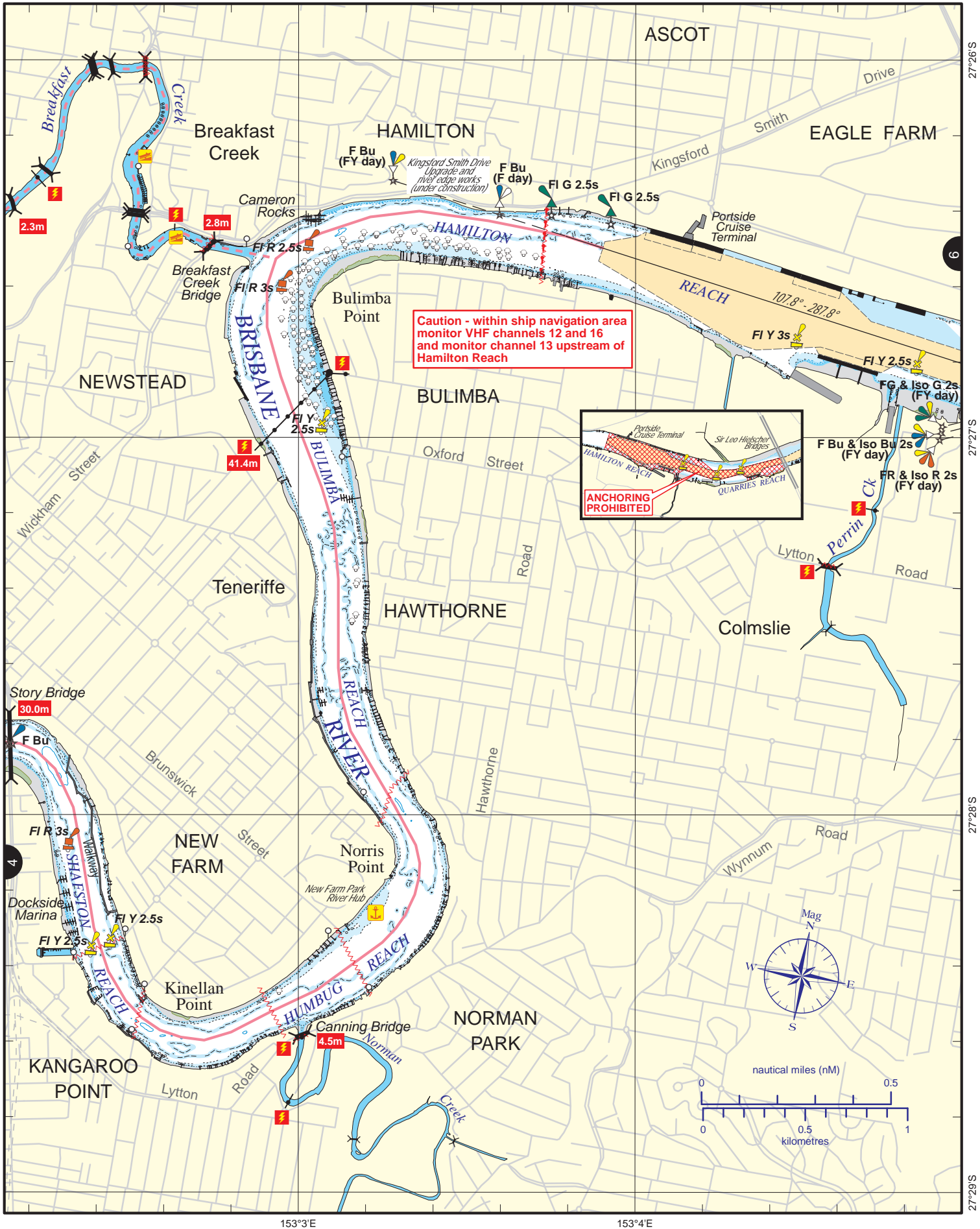
**Exercise care when travelling outside suggested navigation tracks.**

© Copyright The State of Queensland 2018

Queensland Department of Transport and Main Roads - Maritime Safety Queensland.

To reproduce any map within this series, see terms and conditions at Maritime Safety Queensland's website ([www.msq.qld.gov.au](http://www.msq.qld.gov.au))



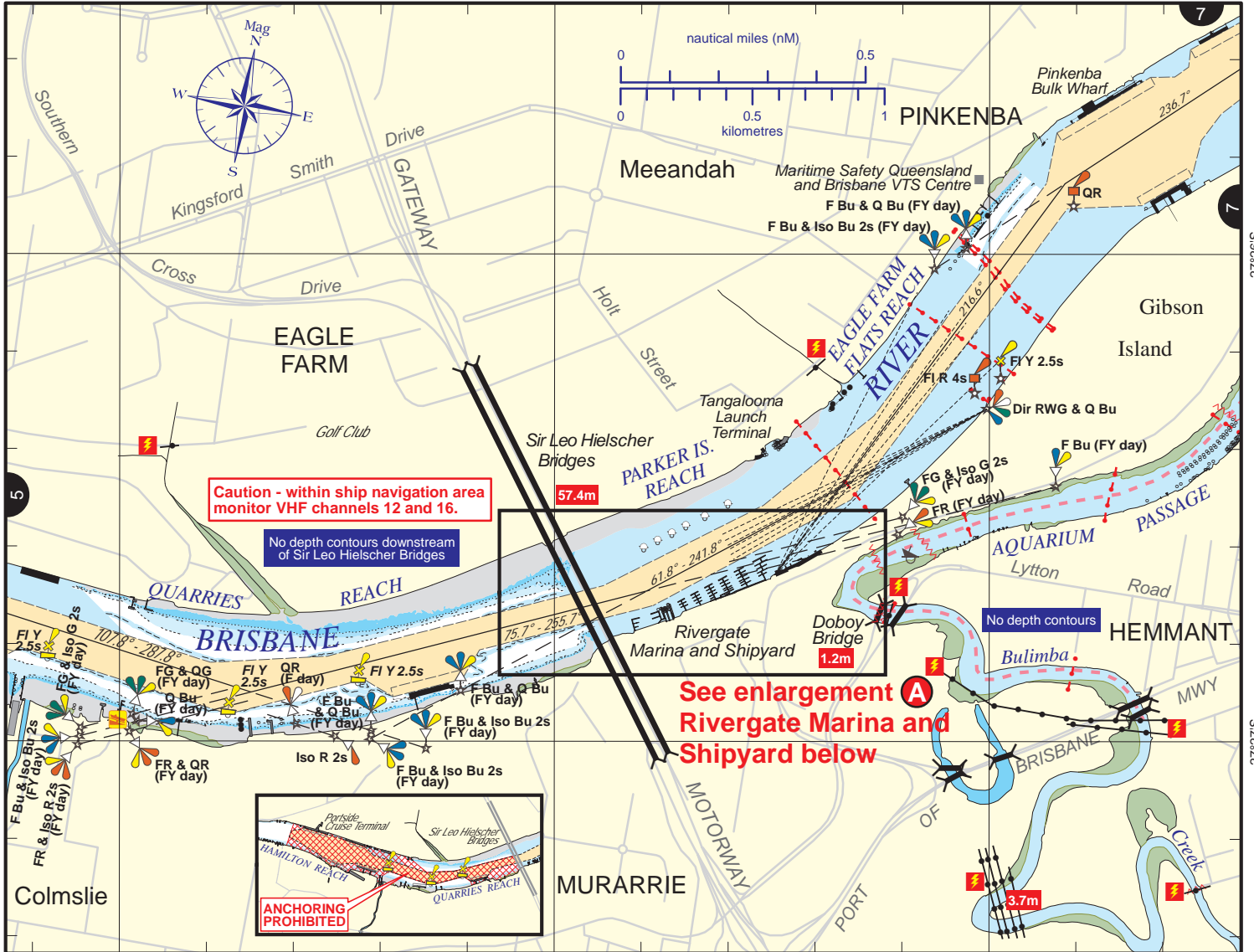


Always keep a proper lookout when boating.  
 Look up and live for power and cable crossings that may not be shown on these maps due to scale or recent construction.  
**CAUTION: depth contours have not been re-surveyed in most areas since the 2011 and 2013 floods.**  
 Exercise care when travelling outside suggested navigation tracks.

Nautical information current to 19 November 2018

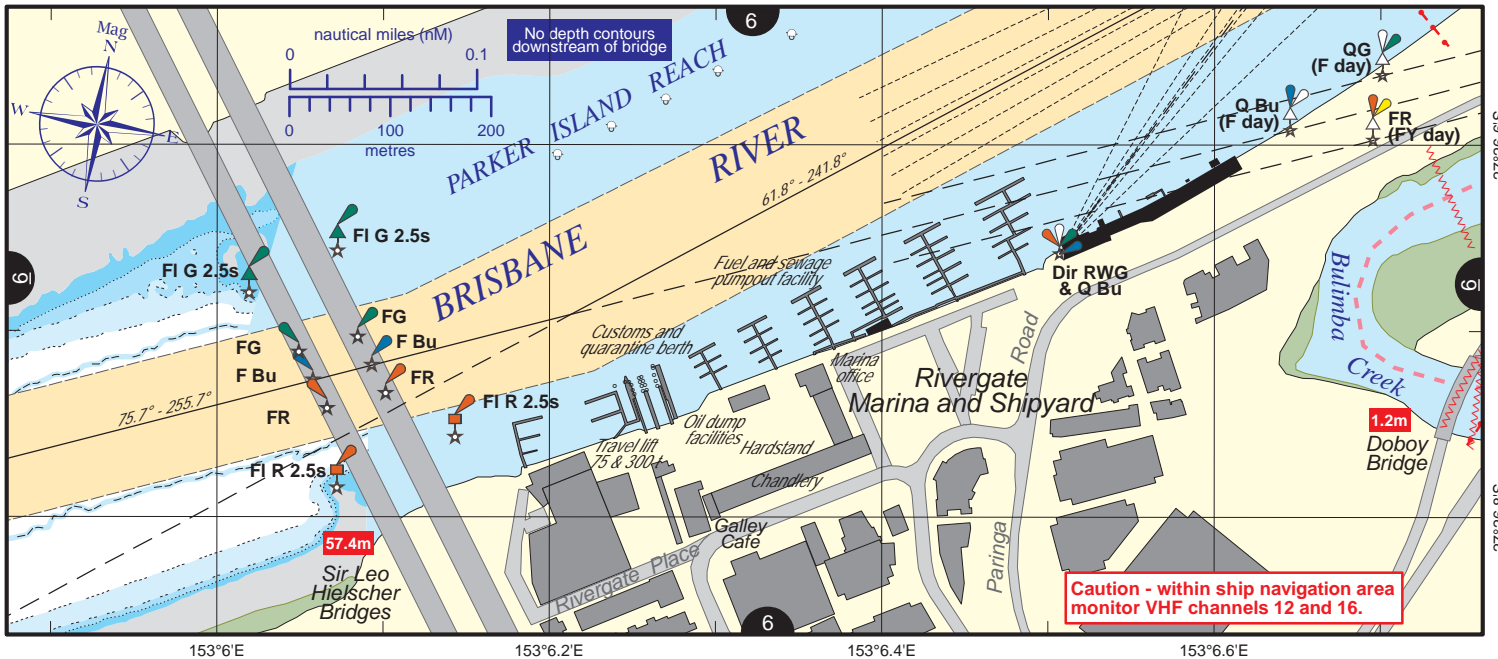
© Copyright The State of Queensland 2018  
 Queensland Department of Transport and Main Roads - Maritime Safety Queensland.  
 To reproduce any map within this series, see terms and conditions at Maritime Safety Queensland's website ([www.msq.qld.gov.au](http://www.msq.qld.gov.au))



**See enlargement A  
 Rivergate Marina and  
 Shipyard below**

**Rivergate Marina and Shipyard A**



Always keep a proper lookout when boating.

Nautical information current to 19 November 2018

**Look up and live** for power and cable crossings that may not be shown on these maps due to scale or recent construction.

**CAUTION: depth contours have not been re-surveyed in most areas since the 2011 and 2013 floods.**

**Exercise care when travelling outside suggested navigation tracks.**

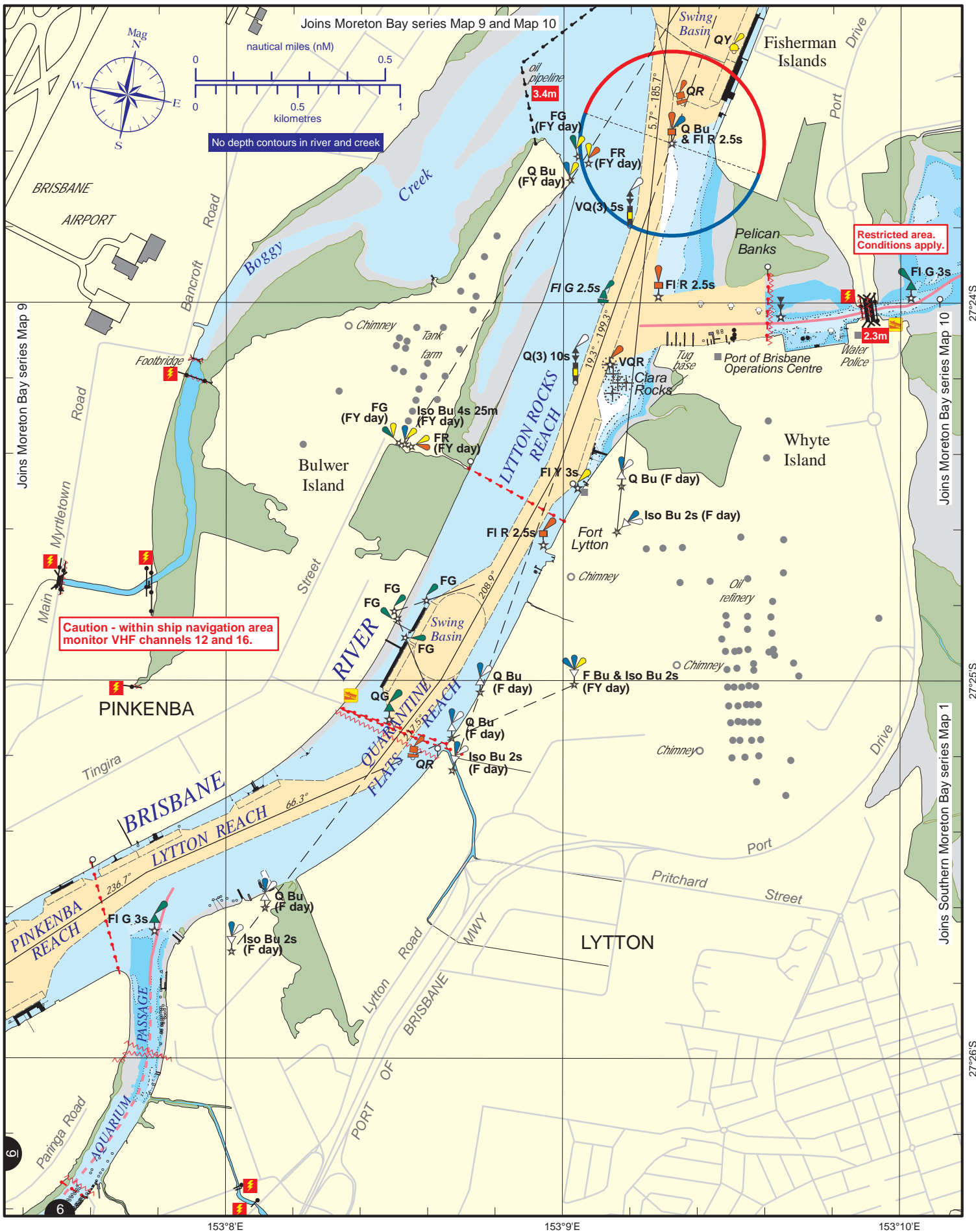
© Copyright The State of Queensland 2018

Queensland Department of Transport and Main Roads - Maritime Safety Queensland.

To reproduce any map within this series, see terms and conditions at Maritime Safety Queensland's website ([www.msq.qld.gov.au](http://www.msq.qld.gov.au))







Always keep a proper lookout when boating.  
**Look up and live** for power and cable crossings that may not be shown on these maps due to scale or recent construction.  
**CAUTION: depth contours have not been re-surveyed in most areas since the 2011 and 2013 floods.**  
 Exercise care when travelling outside suggested navigation tracks.

Nautical information current to 19 November 2018

© Copyright The State of Queensland 2018  
 Queensland Department of Transport and Main Roads - Maritime Safety Queensland.  
 To reproduce any map within this series, see terms and conditions at Maritime Safety Queensland's website ([www.msq.qld.gov.au](http://www.msq.qld.gov.au))