

Maritime Safety Queensland



Manly Boat Harbour

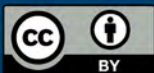
Beacon to Beacon Guide

Southern Moreton Bay

Published by

Maritime Safety Queensland

© Copyright The State of Queensland
(Department of Transport and Main Roads) 2016



To view a copy of this licence, visit
<http://creativecommons.org/licenses/by/3.0/au>

For commercial use terms and conditions

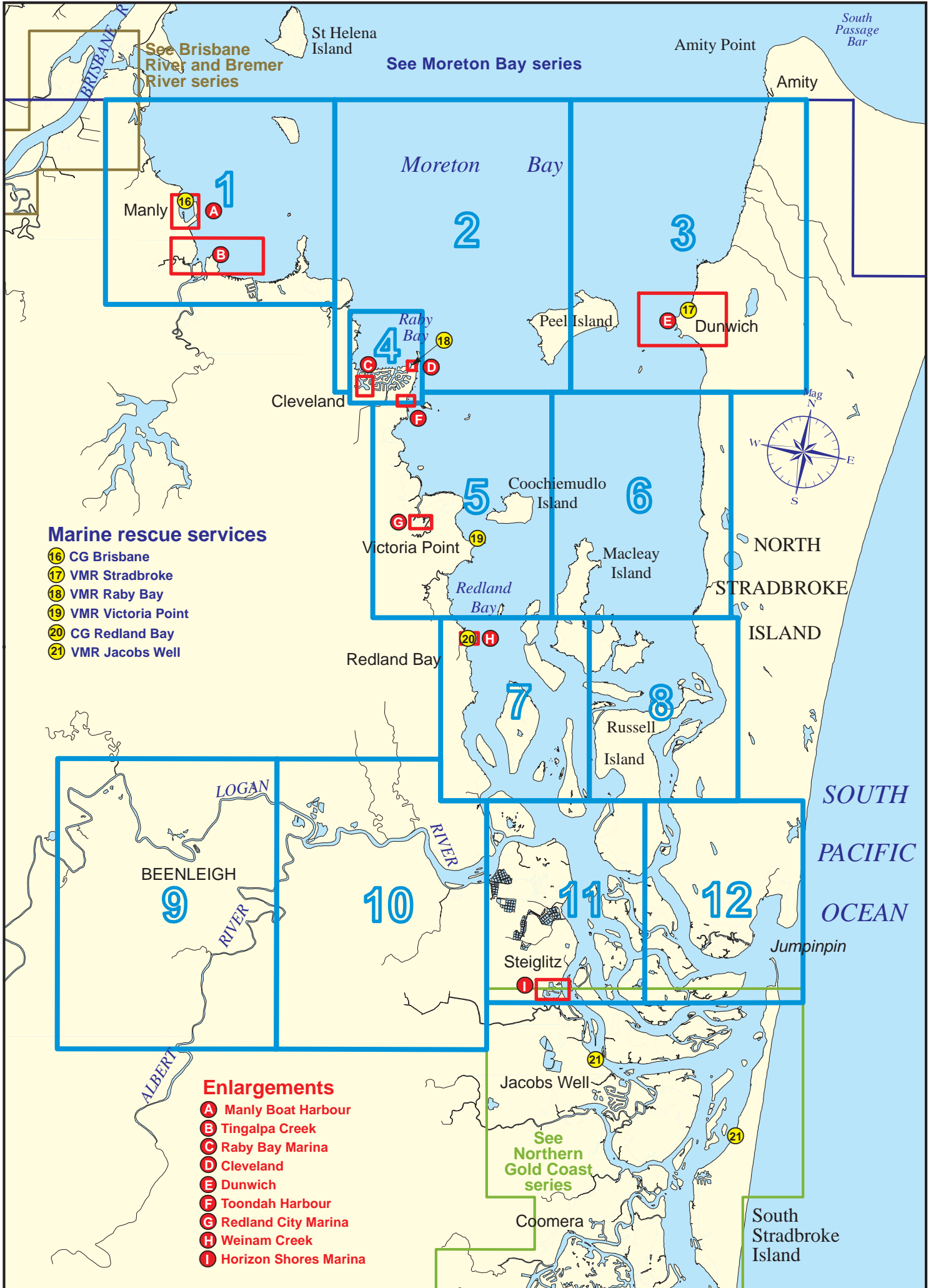
Please visit the Maritime Safety Queensland website at www.msq.qld.gov.au

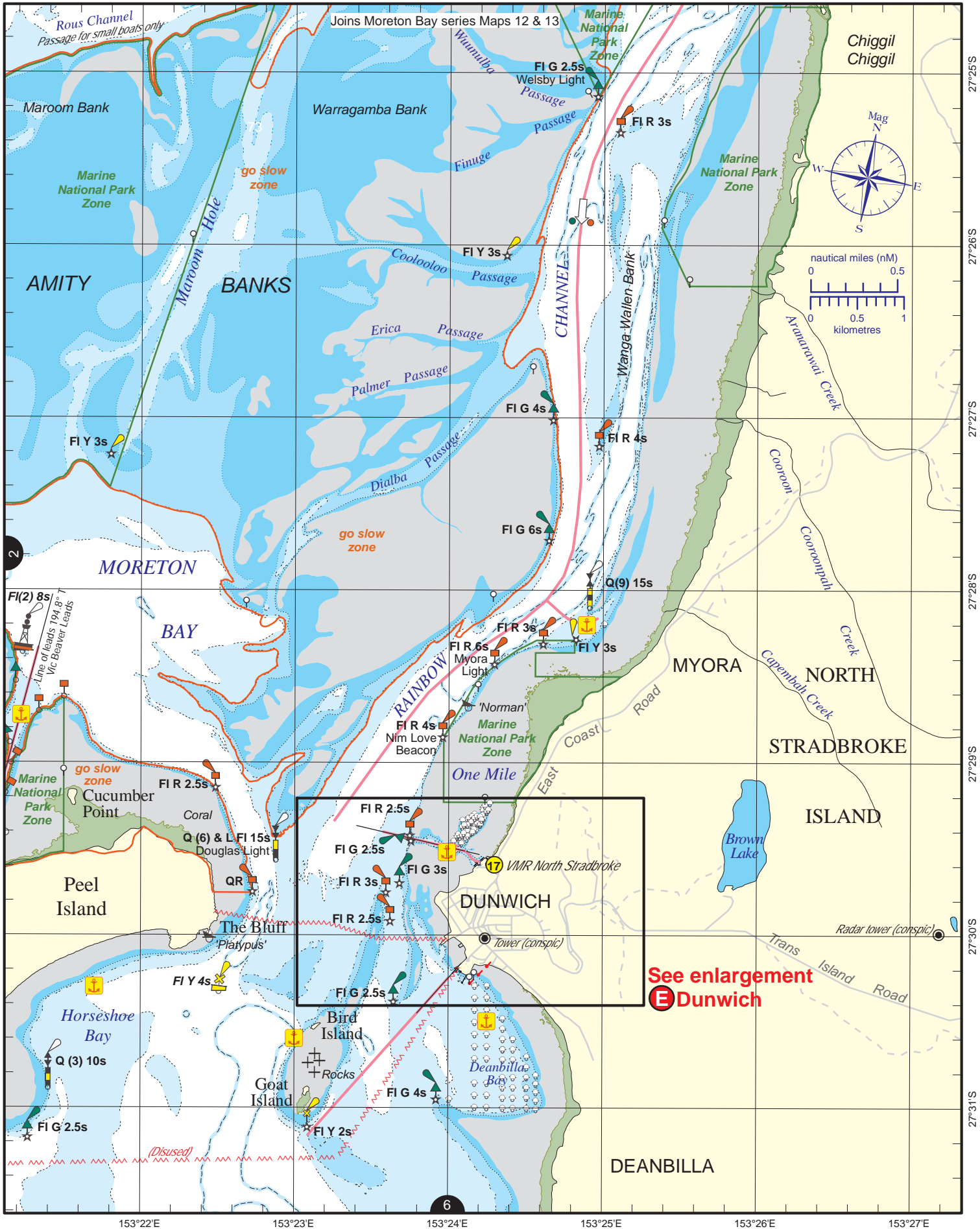
'How to' use this guide

Use this Beacon to Beacon Guide with the 'How to' and legend booklet available from www.msq.qld.gov.au

Southern Moreton Bay

Key Sheet





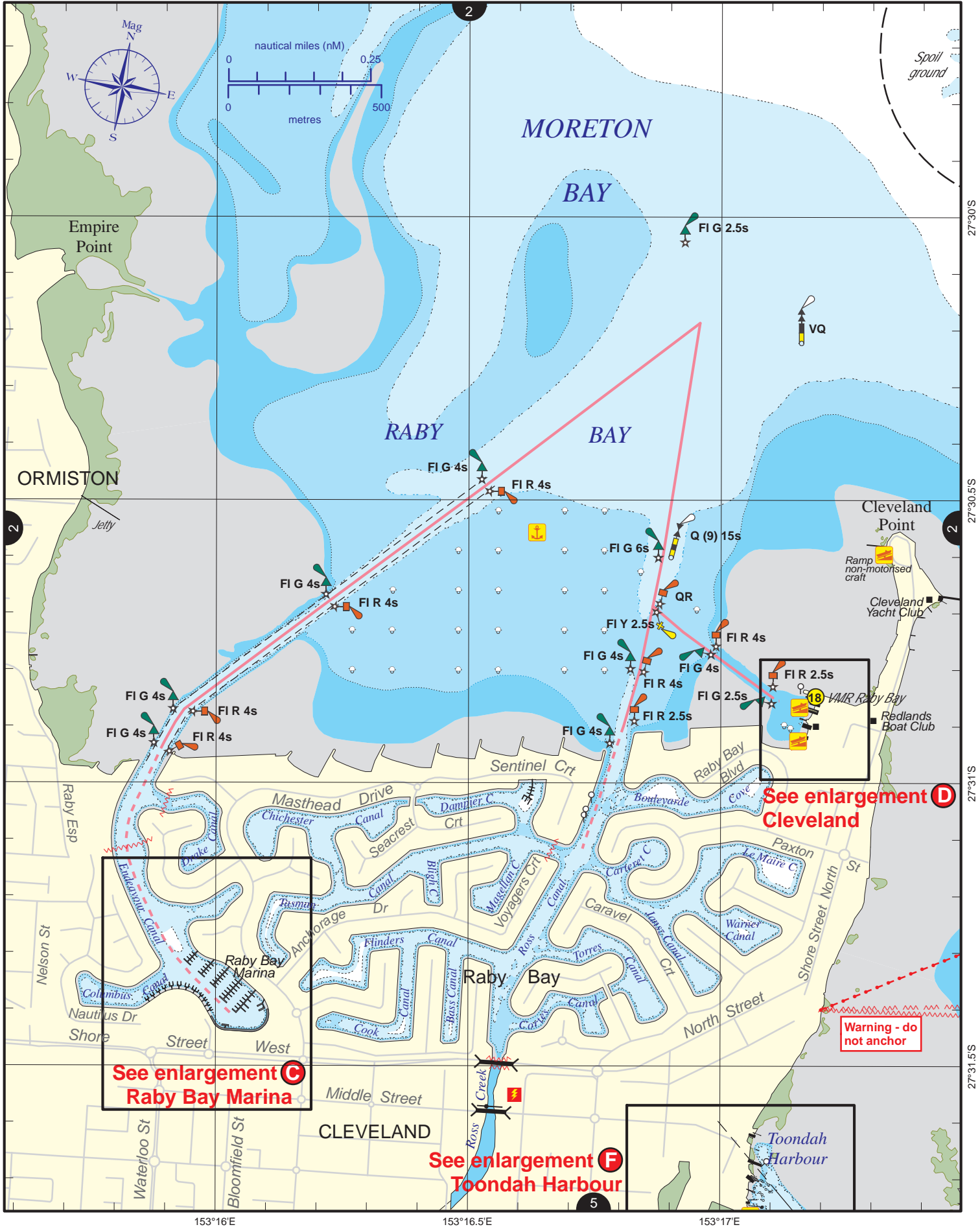
Always keep a proper lookout when boating.
 Look up and live for power and cable crossings that may not be shown on these maps due to scale or recent construction.
CAUTION: depth contours have not been re-surveyed in most areas since the 2011 and 2013 floods.
 Exercise care when travelling outside suggested navigation tracks.

Nautical information current to 9 May 2016

© Copyright The State of Queensland 2016
 Queensland Department of Transport and Main Roads - Maritime Safety Queensland.
 To reproduce any map within this series, see terms and conditions at Maritime Safety Queensland's website (www.msq.qld.gov.au)

CC BY

Queensland Government



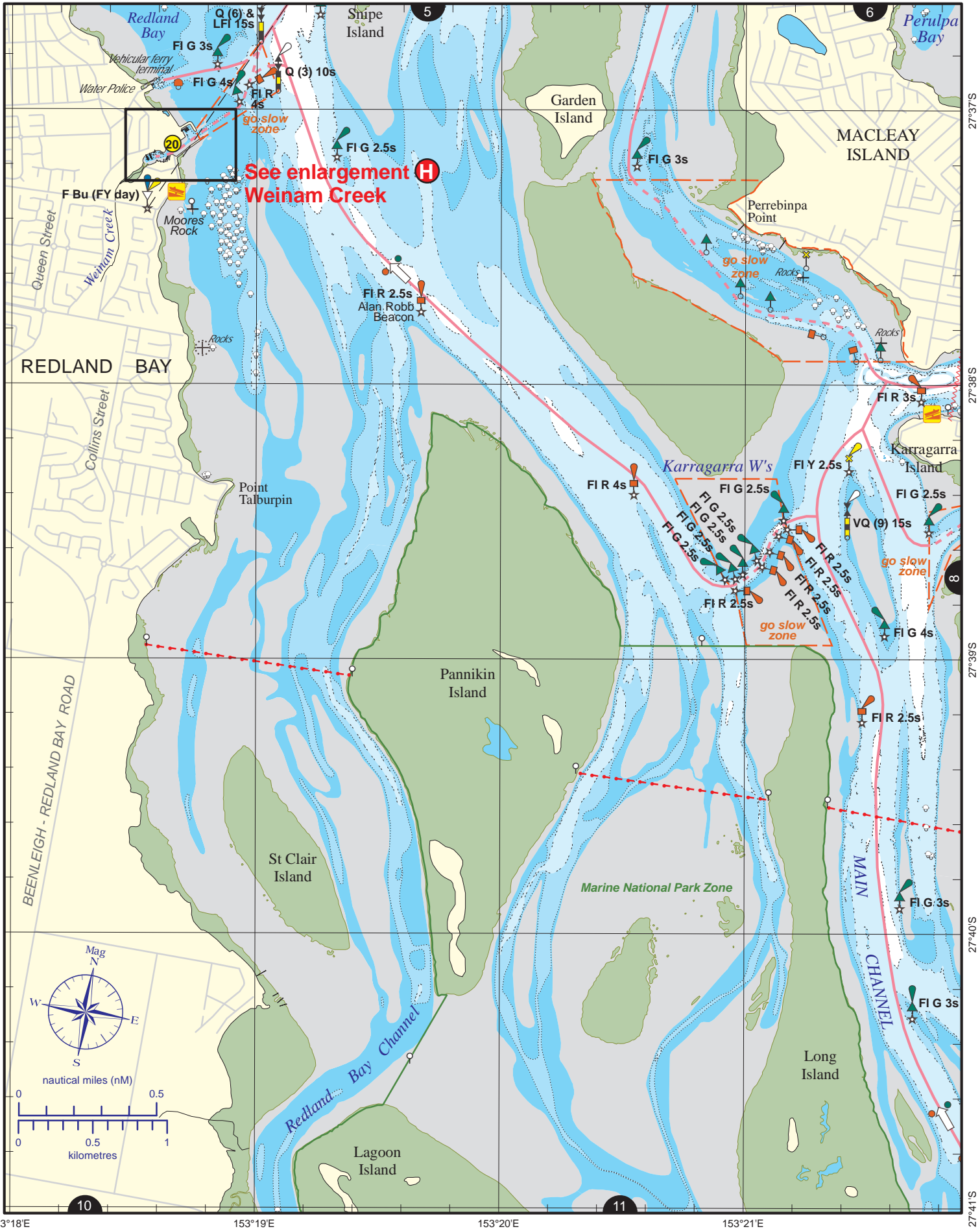
Always keep a proper lookout when boating.
Look up and live for power and cable crossings that may not be shown on these maps due to scale or recent construction.
CAUTION: depth contours have not been re-surveyed in most areas since the 2011 and 2013 floods.
Exercise care when travelling outside suggested navigation tracks.

© Copyright The State of Queensland 2016
 Queensland Department of Transport and Main Roads - Maritime Safety Queensland.
 To reproduce any map within this series, see terms and conditions at Maritime Safety Queensland's website (www.msq.qld.gov.au)

Nautical information current to 9 May 2016

CC BY

Queensland Government



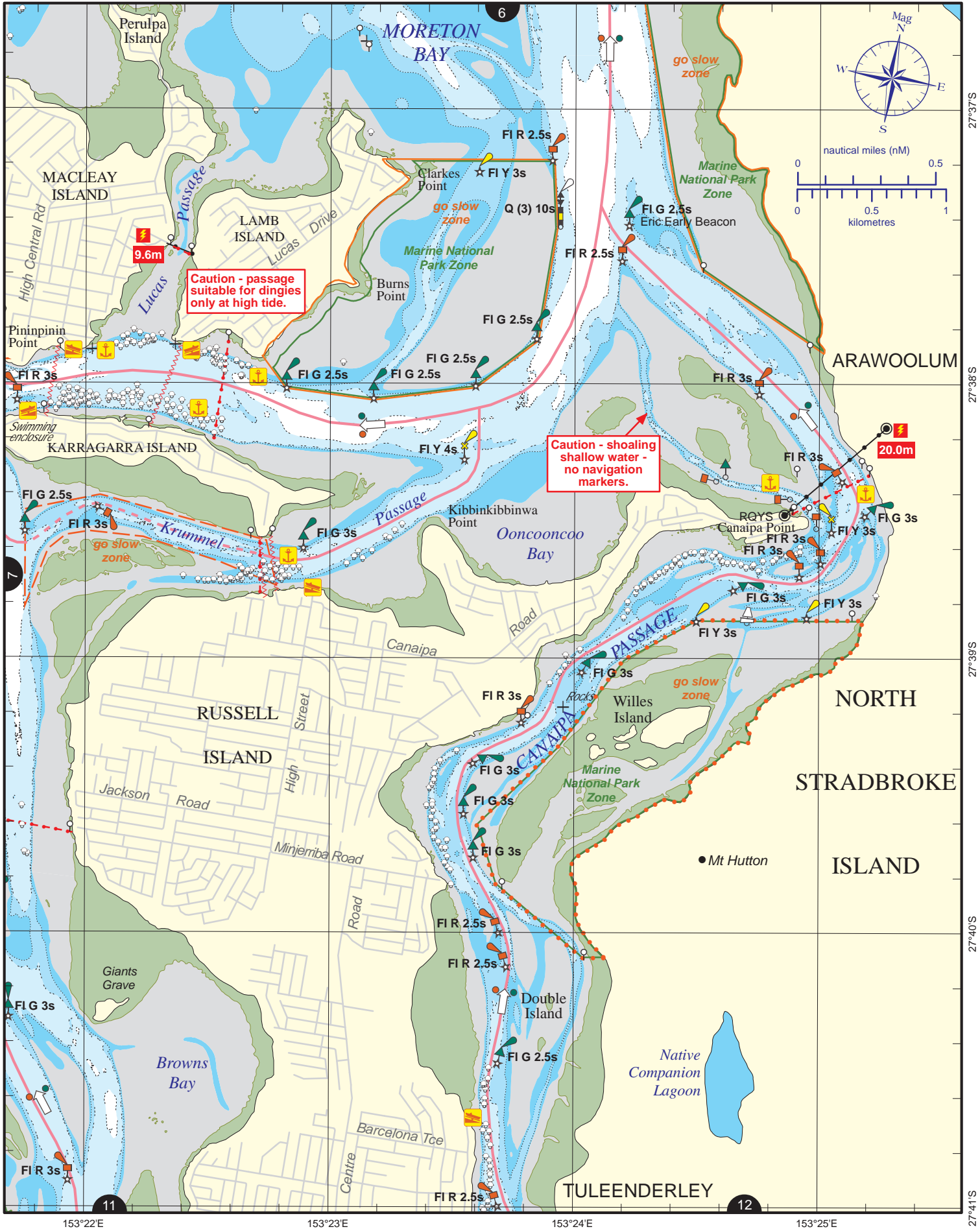
**See enlargement
 Weinam Creek**

Always keep a proper lookout when boating.
Look up and live for power and cable crossings that may not be shown on these maps due to scale or recent construction.
CAUTION: depth contours have not been re-surveyed in most areas since the 2011 and 2013 floods.
Exercise care when travelling outside suggested navigation tracks.

Nautical information current to 9 May 2016

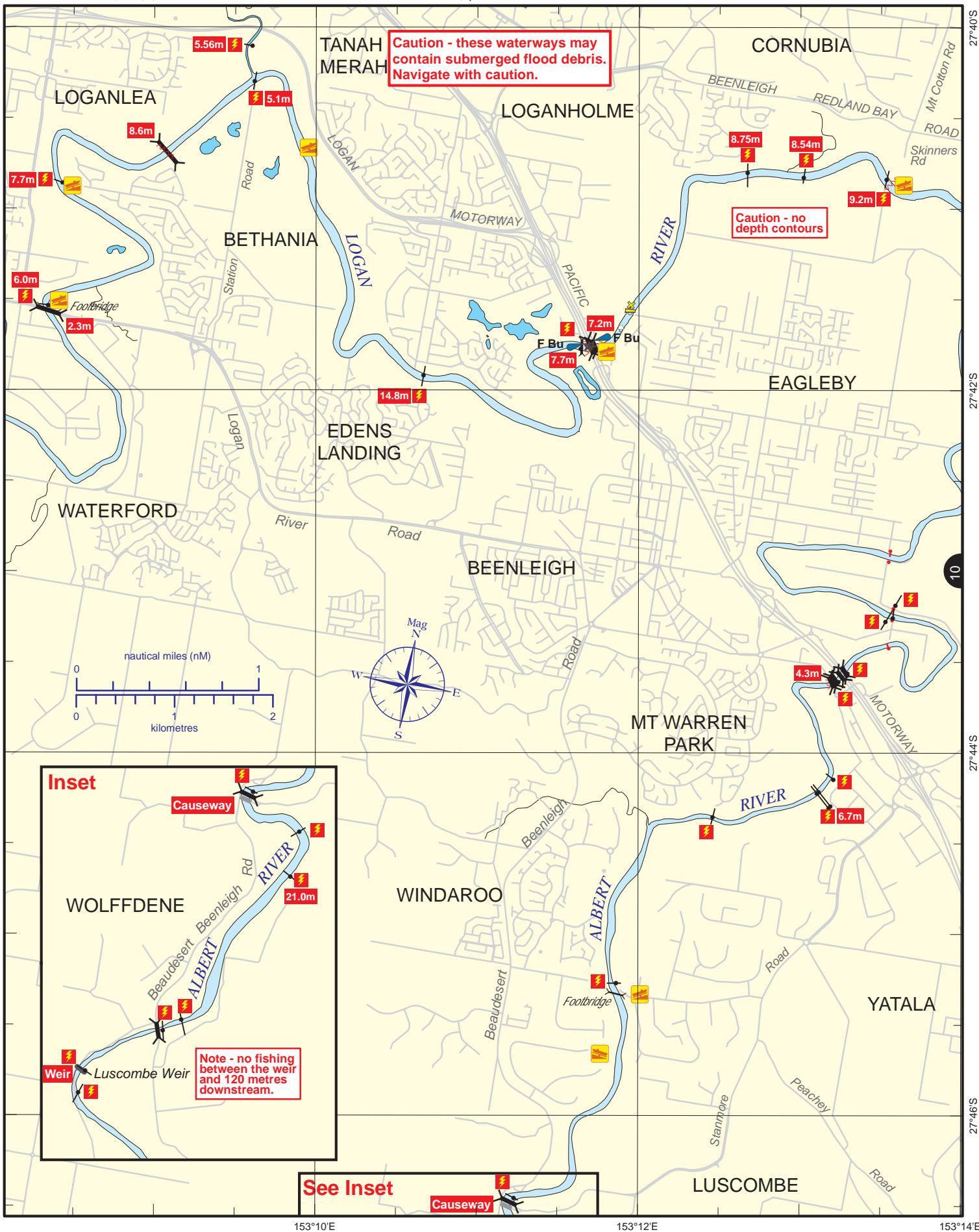
© Copyright The State of Queensland 2016
 Queensland Department of Transport and Main Roads - Maritime Safety Queensland.
 To reproduce any map within this series, see terms and conditions at Maritime Safety Queensland's website (www.msq.qld.gov.au)





Always keep a proper lookout when boating.
Look up and live for power and cable crossings that may not be shown on these maps due to scale or recent construction.
CAUTION: depth contours have not been re-surveyed in most areas since the 2011 and 2013 floods.
Exercise care when travelling outside suggested navigation tracks.

Nautical information current to 9 May 2016



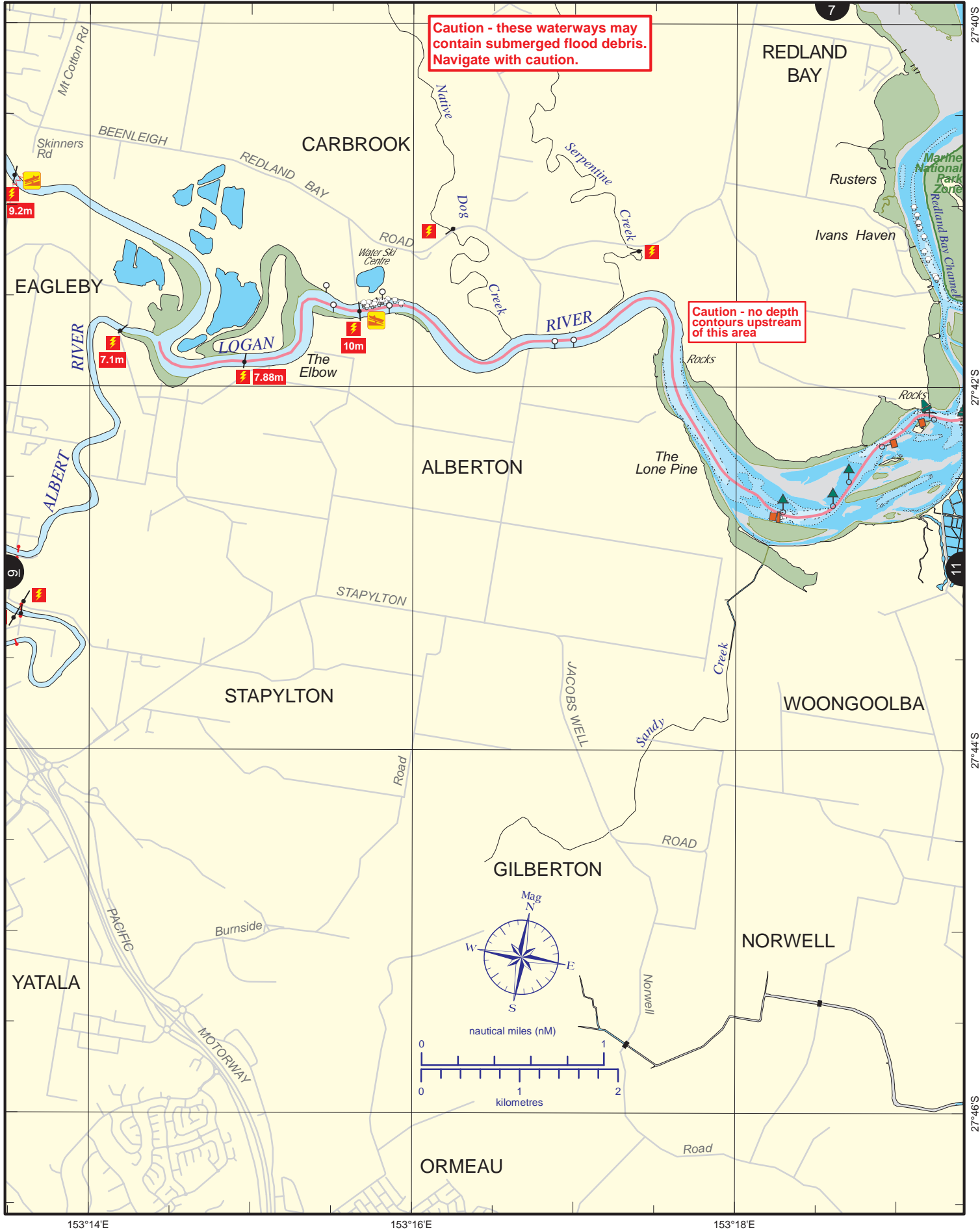
Always keep a proper lookout when boating.
Look up and live for power and cable crossings that may not be shown on these maps due to scale or recent construction.
CAUTION: depth contours have not been re-surveyed in most areas since the 2011 and 2013 floods.
Exercise care when travelling outside suggested navigation tracks.

© Copyright The State of Queensland 2016
 Queensland Department of Transport and Main Roads - Maritime Safety Queensland.
 To reproduce any map within this series, see terms and conditions at Maritime Safety Queensland's website (www.msq.qld.gov.au)

Nautical information current to 9 May 2016

CC BY

Queensland Government



Caution - these waterways may contain submerged flood debris. Navigate with caution.

Caution - no depth contours upstream of this area

Always keep a proper lookout when boating.

Look up and live for power and cable crossings that may not be shown on these maps due to scale or recent construction.

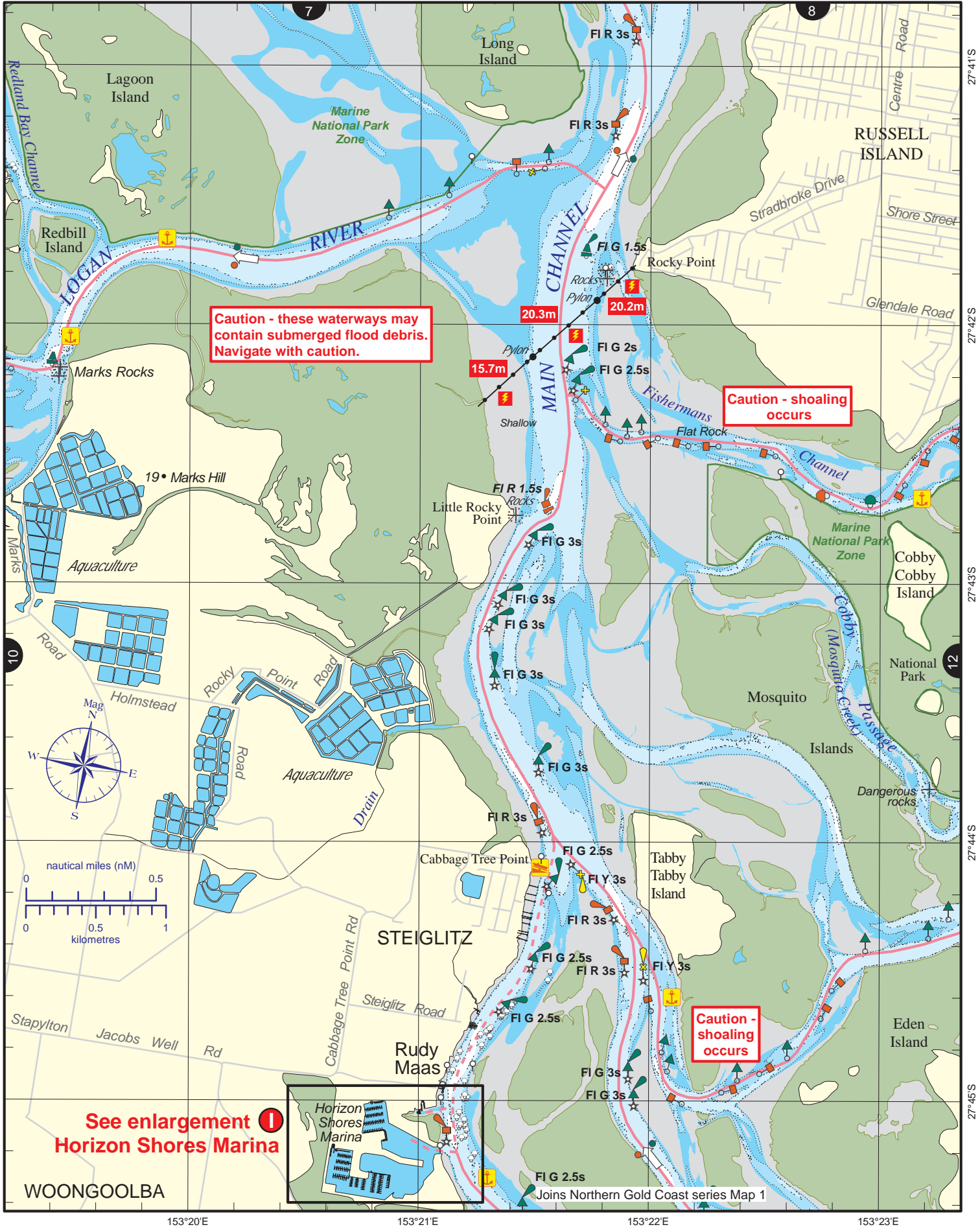
CAUTION: depth contours have not been re-surveyed in most areas since the 2011 and 2013 floods.

Exercise care when travelling outside suggested navigation tracks.

Nautical information current to 9 May 2016

© Copyright The State of Queensland 2016
Queensland Department of Transport and Main Roads - Maritime Safety Queensland.
To reproduce any map within this series, see terms and conditions at Maritime Safety Queensland's website (www.msg.qld.gov.au)





Always keep a proper lookout when boating.

Look up and live for power and cable crossings that may not be shown on these maps due to scale or recent construction.

CAUTION: depth contours have not been re-surveyed in most areas since the 2011 and 2013 floods.

Exercise care when travelling outside suggested navigation tracks.

Nautical information current to 9 May 2016

© Copyright The State of Queensland 2016

Queensland Department of Transport and Main Roads - Maritime Safety Queensland.

To reproduce any map within this series, see terms and conditions at Maritime Safety Queensland's website (www.msq.qld.gov.au)





Always keep a proper lookout when boating.

Look up and live for power and cable crossings that may not be shown on these maps due to scale or recent construction.

CAUTION: depth contours have not been re-surveyed in most areas since the 2011 and 2013 floods.

Exercise care when travelling outside suggested navigation tracks.

Nautical information current to 9 May 2016

© Copyright The State of Queensland 2016

Queensland Department of Transport and Main Roads - Maritime Safety Queensland.

To reproduce any map within this series, see terms and conditions at Maritime Safety Queensland's website (www.msq.qld.gov.au)





All lit beacons marking entrance to Manly Boat Harbour are synchronised

No anchoring within the boat harbour

Always keep a proper lookout when boating.
Look up and live for power and cable crossings that may not be shown on these maps due to scale or recent construction.
CAUTION: depth contours have not been re-surveyed in most areas since the 2011 and 2013 floods.
Exercise care when travelling outside suggested navigation tracks.

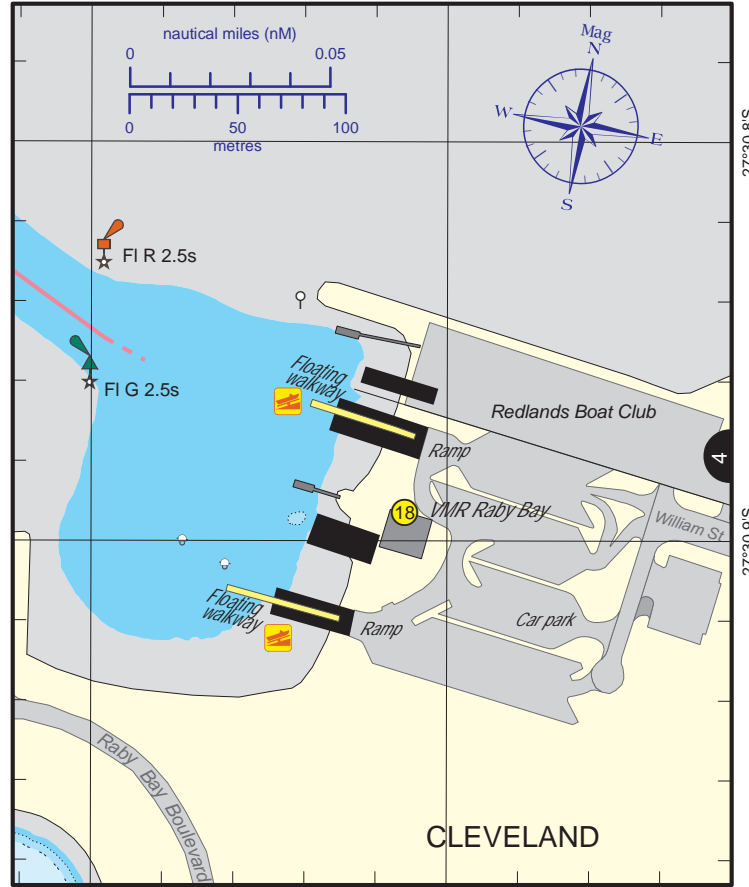
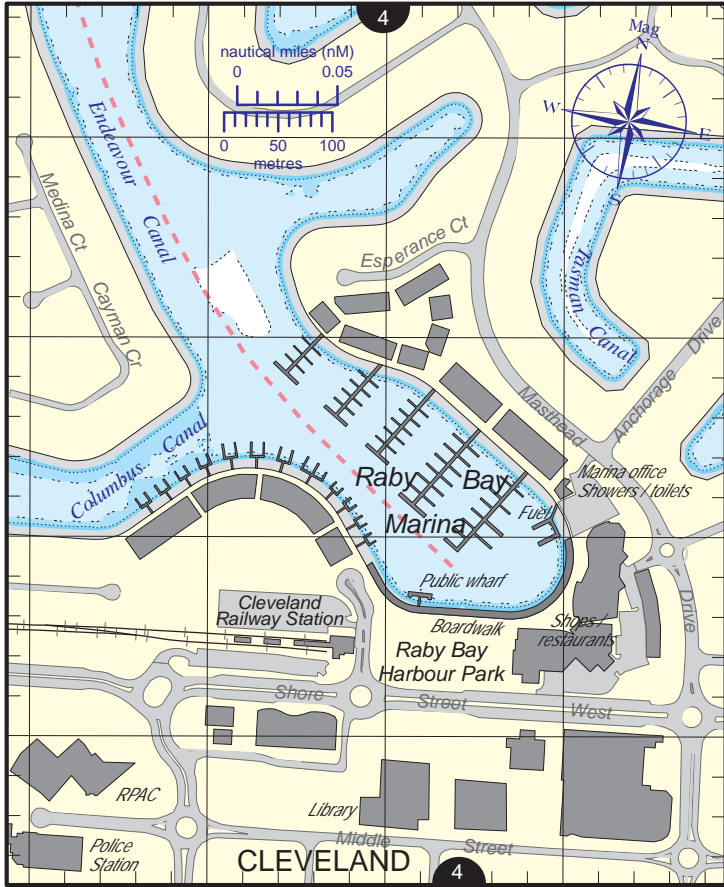
© Copyright The State of Queensland 2016
 Queensland Department of Transport and Main Roads - Maritime Safety Queensland.
 To reproduce any map within this series, see terms and conditions at Maritime Safety Queensland's website (www.msq.qld.gov.au)

Nautical information current to 9 May 2016

C Raby Bay Marina

VMR Raby Bay (0600 - 1800 Sat - Sun - p/h) (88-90, 16-67-21-73-81-82) ph 3821 2244

D Cleveland



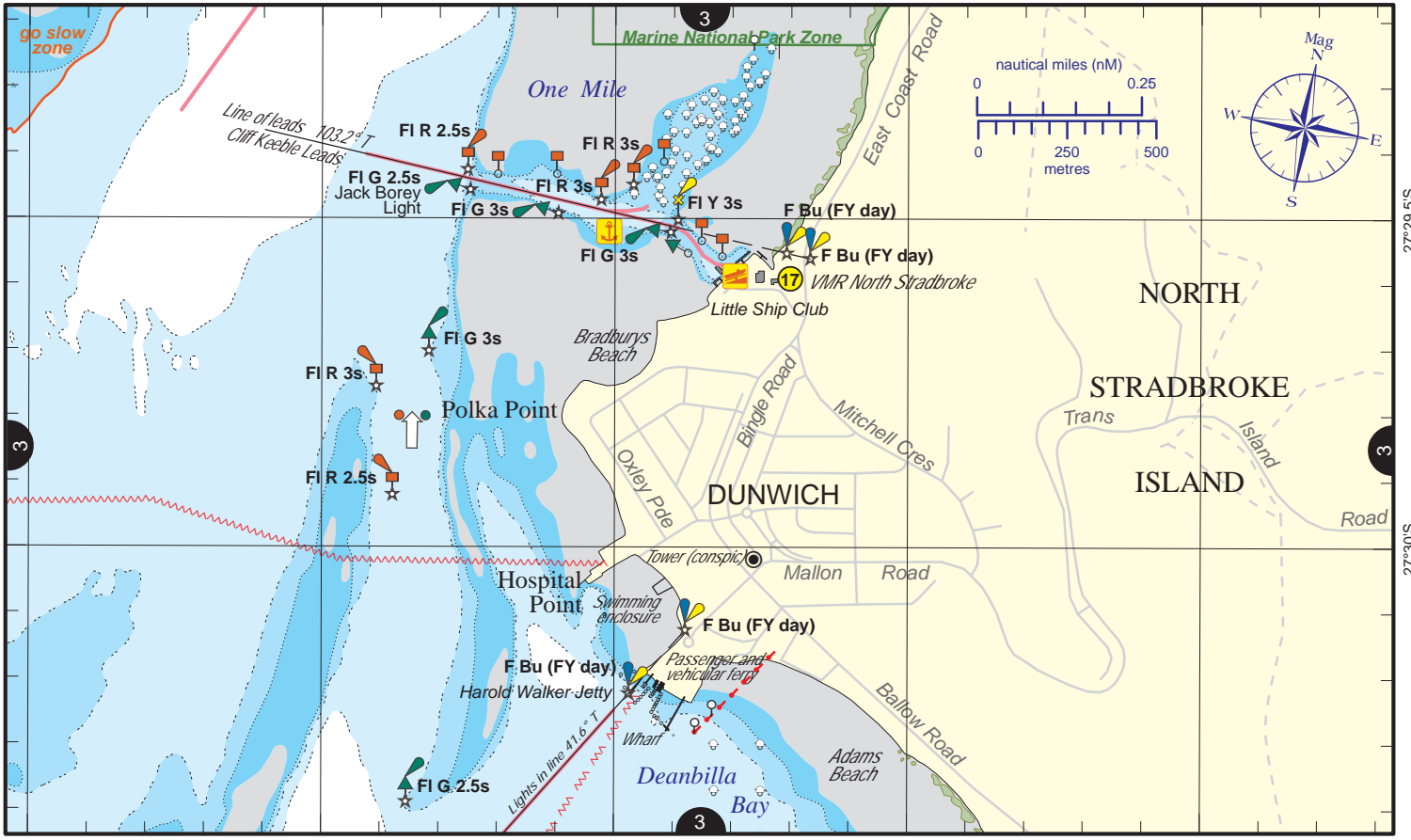
153°15.8'E 153°15.9'E 153°16'E 153°16.1'E

153°17.1'E 153°17.2'E

VMR North Stradbroke (0730 - 1630 Sat - Sun - p/h) (88-90, 16-67-12-13-80-81-82) ph 3409 9338

CG Brisbane (0600 - 2200 Sat - Sun - p/h) (88-90-91, 16-63-67-21-73-81, 2182-4125-6215-8291) ph 3396 5911

E Dunwich



153°23'E 153°23.5'E 153°24'E 153°24.5'E

153°25'E

Always keep a proper lookout when boating.
Look up and live for power and cable crossings that may not be shown on these maps due to scale or recent construction.
CAUTION: depth contours have not been re-surveyed in most areas since the 2011 and 2013 floods.
Exercise care when travelling outside suggested navigation tracks.

Nautical information current to 9 May 2016

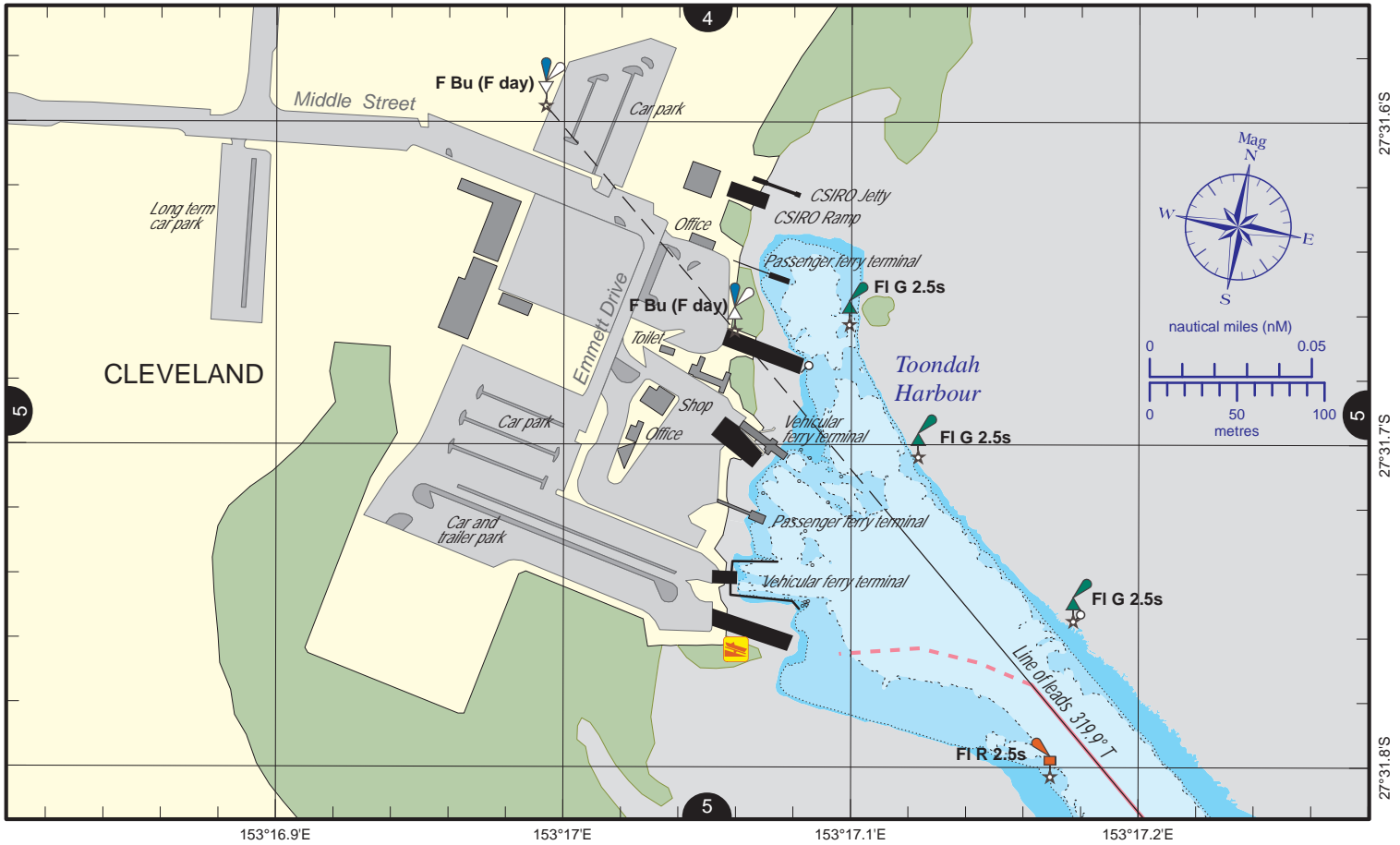
© Copyright The State of Queensland 2016
 Queensland Department of Transport and Main Roads - Maritime Safety Queensland.
 To reproduce any map within this series, see terms and conditions at Maritime Safety Queensland's website (www.msq.qld.gov.au)

CC BY

Queensland Government

VMR Raby Bay (0600 - 1800 Sat - Sun - p/h) (88-90, 16-67-21-73-81-82) ph 3821 2244
 VMR North Stradbroke (0730 - 1630 Sat - Sun - p/h) (88-90, 16-67-12-13-80-81-82) ph 3409 9338

F Toondah Harbour



VMR Victoria Point (0630 - 1700 Sat - Sun, 0700 - 1700 p/h) (88-90, 16-67-73-81-82) ph 3207 8717
 CG Redland Bay (0600 (0700 winter) - 1700 Sat - Sun - p/h) (88-90, 16-67-13-63-73-81) ph 3206 7777

G Redland City Marina

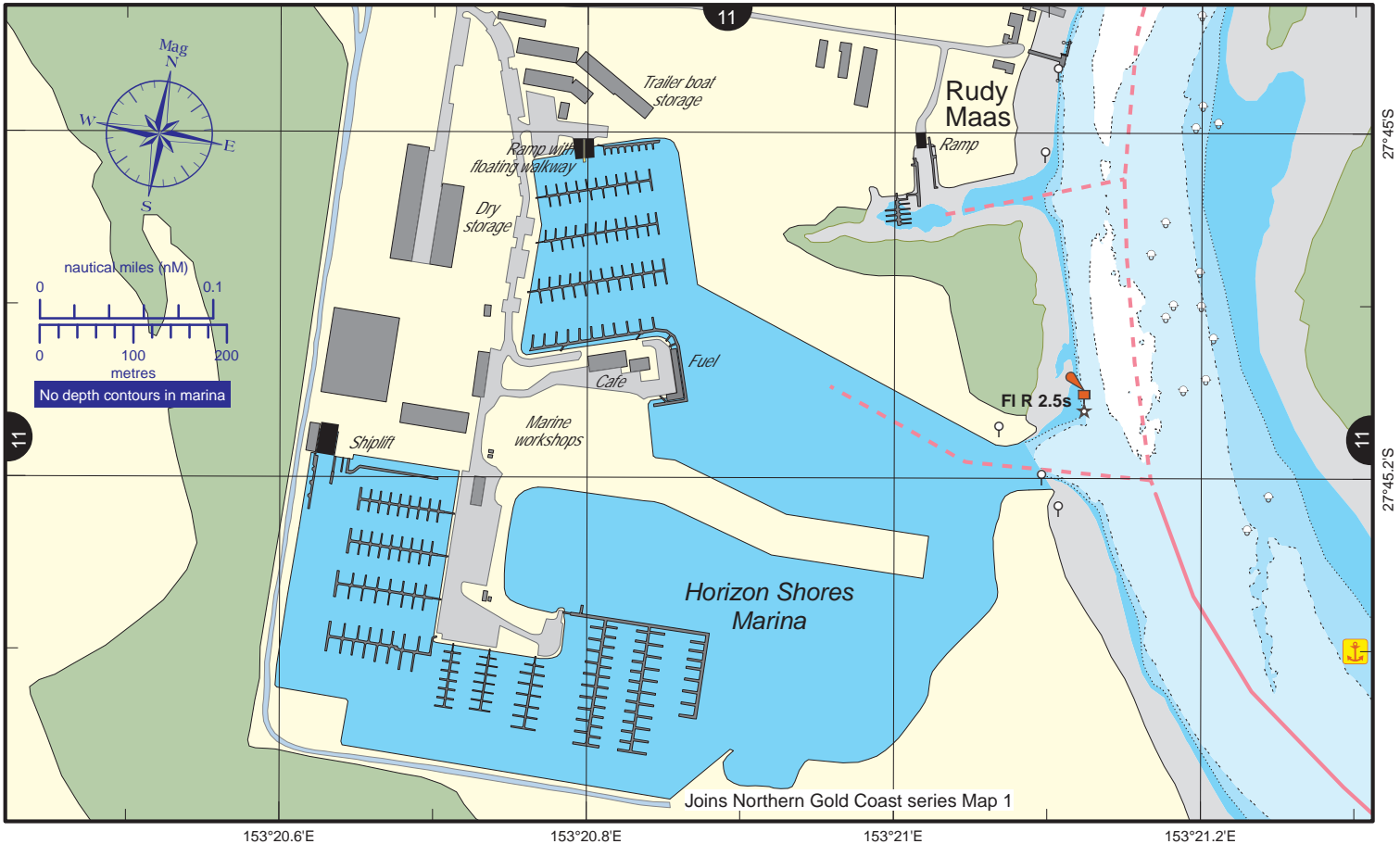
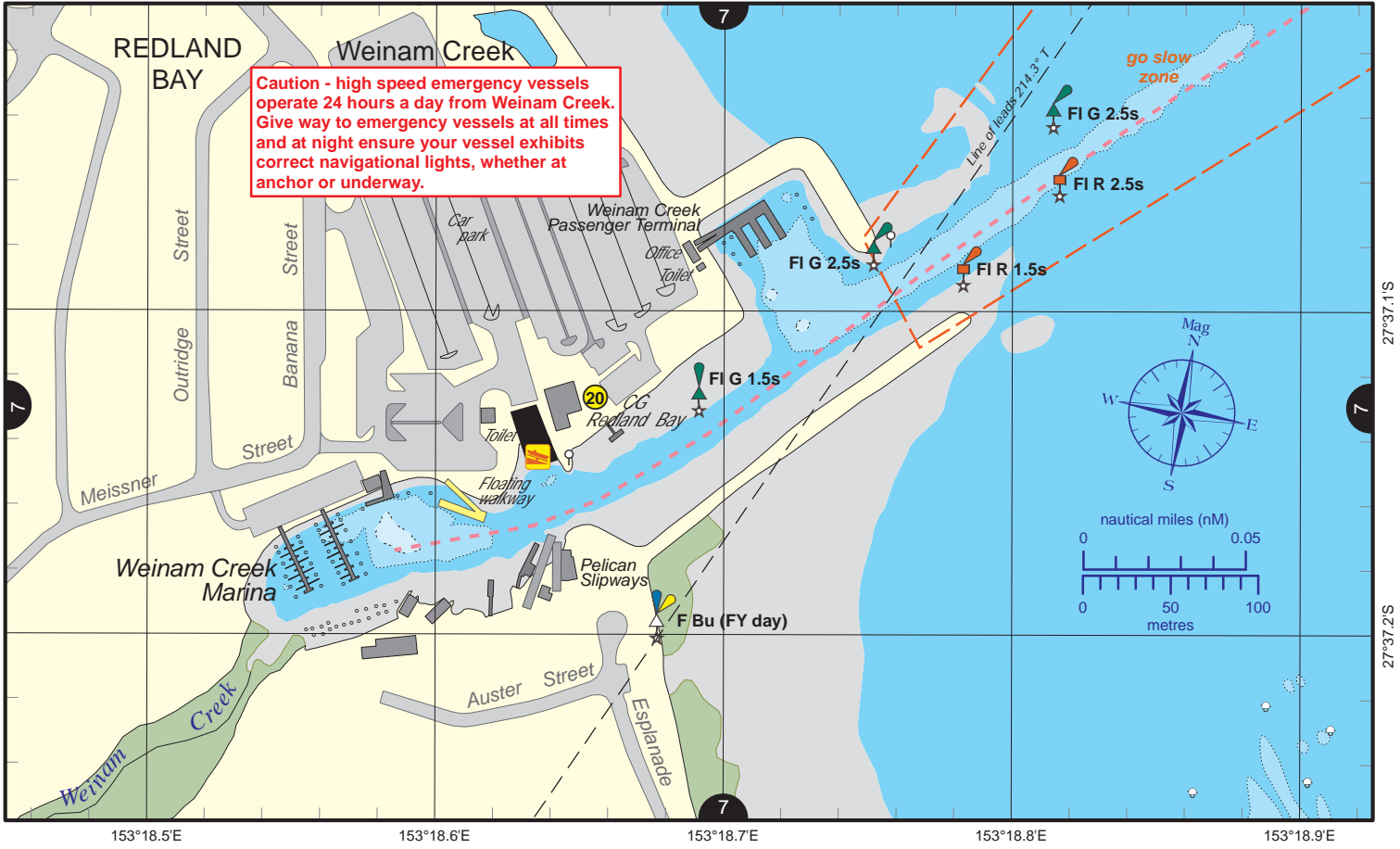


Always keep a proper lookout when boating.
Look up and live for power and cable crossings that may not be shown on these maps due to scale or recent construction.
CAUTION: depth contours have not been re-surveyed in most areas since the 2011 and 2013 floods.
 Exercise care when travelling outside suggested navigation tracks.

Nautical information current to 9 May 2016

© Copyright The State of Queensland 2016
 Queensland Department of Transport and Main Roads - Maritime Safety Queensland.
 To reproduce any map within this series, see terms and conditions at Maritime Safety Queensland's website (www.msq.qld.gov.au)





Always keep a proper lookout when boating.

Nautical information current to 9 May 2016

Look up and live for power and cable crossings that may not be shown on these maps due to scale or recent construction.

CAUTION: depth contours have not been re-surveyed in most areas since the 2011 and 2013 floods.

Exercise care when travelling outside suggested navigation tracks.

© Copyright The State of Queensland 2016

Queensland Department of Transport and Main Roads - Maritime Safety Queensland.

To reproduce any map within this series, see terms and conditions at Maritime Safety Queensland's website (www.msq.qld.gov.au)

